



**SUPERINTENDENCIA DE SEGUROS Y REASEGUROS DE PANAMA**  
**Cuadro 01. PRIMAS SUSCRITAS DE SEGURO DIRECTO CON PARTICIPACIÓN EN EL MERCADO POR RAMOS**  
**Acumulado al Mes de Enero 2015**

COMPAÑIAS	PRIMAS SUSCRITAS													
	Total		Vida Individual		Accidentes Personales		Salud		Colectivo de Vida		Incendio		Multirisgos	
	Monto	%	Monto	%	Monto	%	Monto	%	Monto	%	Monto	%	Monto	%
ACE SEGUROS, S.A	478,711.88	0.39%	-	0.00%	63,866.14	0.05%	-	0.00%	1,704.98	0.00%	82,295.68	0.07%	1,847.99	0.00%
ACERTA COMPAÑIA DE SEGUROS, S.A.	1,469,639.29	1.19%	51,369.97	0.04%	18,755.54	0.02%	163,434.44	0.14%	25,927.76	0.02%	105,135.85	0.09%	17,515.33	0.01%
AIG. SEGUROS PANAMÁ, S.A.	3,972,957.83	3.22%	-	0.00%	97,085.54	0.08%	-	0.00%	-	0.00%	1,314,941.51	1.09%	(6,346.80)	-0.01%
ALIADO SEGUROS, S.A	1,176,961.19	0.96%	-	0.00%	921.55	0.00%	-	0.00%	75,556.97	0.06%	258,040.33	0.21%	11,655.30	0.01%
ASEGURADORA ANCÓN, S.A.	6,319,768.66	5.13%	32,564.31	0.03%	7,043.11	0.01%	946,826.01	0.78%	785,722.43	0.65%	381,486.29	0.32%	24,849.75	0.02%
ASEGURADORA GLOBAL, S.A	1,341,476.66	1.09%	6,370.62	0.01%	724.38	0.00%	-	0.00%	674,788.33	0.56%	61,185.36	0.05%	-	0.00%
ASSA COMPAÑIA DE SEGUROS, S.A	19,931,063.56	16.18%	1,856,312.56	1.54%	142,361.74	0.12%	3,033,182.72	2.51%	2,239,919.79	1.85%	1,574,098.12	1.30%	57,457.83	0.05%
ASSICURAZIONI GENERALI, S.p.A.	8,877,390.97	7.20%	1,981,680.13	1.64%	102,019.55	0.08%	1,094,277.18	0.90%	464,221.76	0.38%	1,269,716.04	1.05%	275,829.18	0.23%
BANESCO SEGUROS, S.A.	1,628,537.09	1.32%	109,168.01	0.09%	(3,063.76)	0.00%	46,546.75	0.04%	300,156.09	0.25%	102,541.87	0.08%	88,377.36	0.07%
COMPAÑIA INTERNACIONAL DE SEGUROS, S.A.	24,230,909.50	19.67%	1,665,325.66	1.38%	193,160.59	0.16%	3,761,523.32	3.11%	2,127,903.37	1.76%	1,438,677.39	1.19%	28,202.58	0.02%
DEL ISTMO ASSURANCE CORP.	526,599.38	0.43%	6,578.46	0.01%	3,090.63	0.00%	53,034.52	0.04%	(2,956.77)	0.00%	302.00	0.00%	-	0.00%
GENERAL DE SEGUROS, S.A.	2,356,994.21	1.91%	-	0.00%	782.17	0.00%	-	0.00%	1,147,649.48	0.95%	291,632.93	0.24%	8,999.42	0.01%
MAPFRE PANAMÁ, S.A	15,773,726.54	12.80%	1,832,718.18	1.52%	132,589.80	0.11%	2,970,587.78	2.46%	2,700,052.41	2.23%	620,246.86	0.51%	-	0.00%
MULTIBANK SEGUROS PANAMÁ	594,355.52	0.48%	4,468.61	0.00%	8,083.86	0.01%	-	0.00%	359,501.32	0.30%	38,382.93	0.03%	1,361.00	0.00%
NACIONAL DE SEGUROS DE PANAMÁ Y CENTROAMÉRICA, S.A.	3,397,657.51	2.76%	(211,524.92)	-0.17%	25,355.36	0.02%	-	0.00%	625.95	0.00%	294,126.94	0.24%	-	0.00%
ÓPTIMA COMPAÑIA DE SEGUROS, S.A.	5,026,967.93	4.08%	-	0.00%	91,632.40	0.08%	-	0.00%	125,350.18	0.10%	127,245.92	0.11%	7,103.55	0.01%
PAN AMERICAN LIFE INSURANCE DE PANAMÁ, S.A	9,158,581.98	7.43%	2,000,712.41	1.65%	211,568.60	0.17%	5,249,991.33	4.34%	1,696,309.64	1.40%	-	0.00%	-	0.00%
SAGICOR PANAMÁ	489,887.17	0.40%	36,430.39	0.03%	335.44	0.00%	421,807.11	0.35%	31,314.23	0.03%	-	0.00%	-	0.00%
SEGUROS BANISTMO, S.A.	5,265,910.26	4.27%	422,377.56	0.35%	88,148.20	0.07%	74,591.94	0.06%	1,347,075.00	1.11%	713,937.42	0.59%	-	0.00%
SEGUROS FEDPA, S.A.	2,323,326.17	1.89%	20,615.06	0.02%	70,487.50	0.06%	5,176.76	0.00%	370,733.88	0.31%	24,755.70	0.02%	2,777.31	0.00%
SEGUROS SURAMERICANA, S.A.	4,530,857.95	3.68%	1,091,981.45	0.90%	50,572.48	0.04%	-	0.00%	105,134.40	0.09%	400,815.86	0.33%	-	0.00%
VIVIR COMPAÑIA DE SEGUROS, S.A.	126,340.86	0.10%	-	0.00%	-	0.00%	93,810.55	0.08%	32,530.31	0.03%	-	0.00%	-	0.00%
WORLDWIDE MEDICAL ASSURANCE, LTD. CORP.	1,924,181.76	1.56%	129,407.74	0.11%	-	0.00%	1,781,653.16	1.47%	13,120.86	0.01%	-	0.00%	-	0.00%
<b>SUB-TOTAL</b>	<b>120,922,803.87</b>	<b>98.14%</b>	<b>11,036,556.20</b>	<b>9.13%</b>	<b>1,305,520.82</b>	<b>1.08%</b>	<b>19,696,443.57</b>	<b>16.29%</b>	<b>14,622,342.37</b>	<b>12.09%</b>	<b>9,099,565.00</b>	<b>7.53%</b>	<b>519,629.80</b>	<b>0.43%</b>
SEGUROS BBA CORP.	379,876.24	0.31%	2,144.17	0.00%	3,703.25	0.00%	6,082.88	0.01%	16,104.00	0.01%	27,688.77	0.02%	4,106.96	0.00%
BUPA PANAMÁ, S.A	-	0.00%	-	0.00%	-	0.00%	-	0.00%	-	0.00%	-	0.00%	-	0.00%
LA FLORESTA DE SEGUROS Y VIDA, S.A.	580,619.50	0.47%	9,082.10	0.01%	2,568.70	0.00%	93,625.80	0.08%	10,315.10	0.01%	115,474.10	0.10%	-	0.00%
LA REGIONAL DE SEGUROS, S.A.	350,294.48	0.28%	1,384.09	0.00%	-	0.00%	-	0.00%	3,262.06	0.00%	127,183.51	0.11%	6,485.43	0.01%
MERCANTIL PANAMÁ SEGUROS, S.A	16,217.05	0.01%	13,929.92	0.01%	2,287.13	0.00%	-	0.00%	-	0.00%	-	0.00%	-	0.00%
SEGUROS CONFIANZA, S.A.	406,030.84	0.33%	14,263.62	0.01%	757.13	0.00%	-	0.00%	1,210.04	0.00%	16,851.61	0.01%	18,972.78	0.02%
SEGUROS CONSTITUCIÓN, S.A.	558,160.10	0.45%	15,097.49	0.01%	(1,023.49)	0.00%	-	0.00%	12,382.41	0.01%	26,431.79	0.02%	-	0.00%
<b>SUB-TOTAL</b>	<b>2,291,198.21</b>	<b>1.86%</b>	<b>55,901.39</b>	<b>0.05%</b>	<b>8,292.72</b>	<b>0.01%</b>	<b>99,708.68</b>	<b>0.08%</b>	<b>43,273.61</b>	<b>0.04%</b>	<b>313,629.78</b>	<b>0.25%</b>	<b>29,565.17</b>	<b>0.02%</b>
<b>TOTAL</b>	<b>\$123,214,002.08</b>	<b>100.00%</b>	<b>\$11,092,457.59</b>	<b>9.00%</b>	<b>\$1,313,813.54</b>	<b>1.07%</b>	<b>\$19,796,152.25</b>	<b>16.07%</b>	<b>\$14,665,615.98</b>	<b>11.90%</b>	<b>\$9,413,194.78</b>	<b>7.64%</b>	<b>\$549,194.97</b>	<b>0.45%</b>

**SUPERINTENDENCIA DE SEGUROS Y REASEGUROS DE PANAMA**  
**Cuadro 01. PRIMAS SUSCRITAS DE SEGURO DIRECTO CON PARTICIPACIÓN EN EL MERCADO POR RAMOS**  
**Acumulado al Mes de Enero 2015**

COMPAÑIAS	PRIMAS SUSCRITAS															
	Transporte		Casco		Automóvil		Ramos Técnicos		Resp. Civil		Robo		Fianzas		Otros	
	Monto	%	Monto	%	Monto	%	Monto	%	Monto	%	Monto	%	Monto	%	Monto	%
ACE SEGUROS, S.A	57,926.00	0.05%	-	0.00%	-	0.00%	8,661.02	0.01%	262,410.07	0.22%	-	0.00%	-	0.00%	-	0.00%
ACERTA COMPAÑIA DE SEGUROS, S.A.	25,583.13	0.02%	7,148.20	0.01%	648,889.62	0.54%	75,652.47	0.06%	38,054.56	0.03%	11,371.65	0.01%	273,001.93	0.23%	7,798.84	0.01%
AIG. SEGUROS PANAMÁ, S.A.	29,629.52	0.02%	223,097.85	0.18%	352,214.89	0.29%	-	0.00%	51,481.62	0.04%	133,916.51	0.11%	16,390.14	0.01%	1,760,547.05	1.46%
ALIADO SEGUROS, S.A	89,091.48	0.07%	5,628.87	0.00%	573,322.88	0.47%	39,092.47	0.03%	38,054.41	0.03%	5,209.82	0.00%	69,047.83	0.06%	11,339.28	0.01%
ASEGURADORA ANCÓN, S.A.	24,453.54	0.02%	75,823.37	0.06%	1,933,713.84	1.60%	25,168.04	0.02%	177,836.80	0.15%	14,293.82	0.01%	1,735,614.18	1.44%	154,373.17	0.13%
ASEGURADORA GLOBAL, S.A	-	0.00%	-	0.00%	399,513.66	0.33%	-	0.00%	-	0.00%	-	0.00%	35,668.41	0.03%	163,225.90	0.13%
ASSA COMPAÑIA DE SEGUROS, S.A	303,951.03	0.25%	69,273.61	0.06%	2,452,227.95	2.03%	171,008.32	0.14%	802,536.99	0.66%	411,863.86	0.34%	448,780.07	0.37%	6,368,088.97	5.27%
ASSICURAZIONI GENERALI, S.p.A.	170,782.93	0.14%	136,670.97	0.11%	2,486,869.02	2.06%	500,288.69	0.41%	267,930.91	0.22%	73,622.87	0.06%	25,133.14	0.02%	28,348.60	0.02%
BANESCO SEGUROS, S.A.	68,095.76	0.06%	169,487.27	0.14%	281,233.35	0.23%	86,350.17	0.07%	34,839.53	0.03%	11,372.71	0.01%	136,064.59	0.11%	197,367.39	0.16%
COMPAÑIA INTERNACIONAL DE SEGUROS, S.A.	1,100,904.70	0.91%	585,432.26	0.48%	3,410,036.14	2.82%	504,593.42	0.42%	2,132,179.63	1.76%	217,980.81	0.18%	1,039,345.45	0.86%	6,025,644.18	4.98%
DEL ISTMO ASSURANCE CORP.	-	0.00%	-	0.00%	-	0.00%	10,457.86	0.01%	9,629.43	0.01%	5,000.00	0.00%	441,463.25	0.37%	-	0.00%
GENERAL DE SEGUROS, S.A.	24,931.70	0.02%	-	0.00%	283,425.79	0.23%	73,828.89	0.06%	10,688.38	0.01%	4,037.09	0.00%	81,360.74	0.07%	429,657.62	0.36%
MAPFRE PANAMÁ, S.A	133,926.41	0.11%	64,105.87	0.05%	2,983,303.83	2.47%	-	0.00%	357,785.50	0.30%	497,671.25	0.41%	1,964,412.26	1.62%	1,516,326.39	1.25%
MULTIBANK SEGUROS PANAMÁ	717.22	0.00%	1,382.40	0.00%	113,038.30	0.09%	8,376.31	0.01%	528.70	0.00%	2,666.68	0.00%	(5,866.92)	0.00%	61,715.11	0.05%
NACIONAL DE SEGUROS DE PANAMÁ Y CENTROAMÉRICA, S.A.	2,662.23	0.00%	6,804.84	0.01%	329,437.40	0.27%	11,583.60	0.01%	1,685,254.46	1.39%	38,625.31	0.03%	1,214,556.77	1.00%	149.57	0.00%
ÓPTIMA COMPAÑIA DE SEGUROS, S.A.	122,251.10	0.10%	3,409.38	0.00%	251,024.84	0.21%	46,421.09	0.04%	3,018,509.73	2.50%	416,130.43	0.34%	125,925.38	0.10%	691,963.93	0.57%
PAN AMERICAN LIFE INSURANCE DE PANAMÁ, S.A	-	0.00%	-	0.00%	-	0.00%	-	0.00%	-	0.00%	-	0.00%	-	0.00%	-	0.00%
SAGICOR PANAMÁ	-	0.00%	-	0.00%	-	0.00%	-	0.00%	-	0.00%	-	0.00%	-	0.00%	-	0.00%
SEGUROS BANISTMO, S.A.	91,826.97	0.08%	28,885.79	0.02%	2,076,678.38	1.72%	52,333.25	0.04%	21,904.85	0.02%	216,048.95	0.18%	1,222.58	0.00%	130,879.37	0.11%
SEGUROS FEDPA, S.A.	1,611.85	0.00%	595.62	0.00%	1,689,691.71	1.40%	(3,459.04)	0.00%	15,610.92	0.01%	118,353.25	0.10%	6,375.65	0.01%	-	0.00%
SEGUROS SURAMERICANA, S.A.	111,437.90	0.09%	-	0.00%	1,850,853.16	1.53%	88,506.75	0.07%	106,089.24	0.09%	18,488.99	0.02%	503,323.16	0.42%	203,654.56	0.17%
VIVIR COMPAÑIA DE SEGUROS, S.A.	-	0.00%	-	0.00%	-	0.00%	-	0.00%	-	0.00%	-	0.00%	-	0.00%	-	0.00%
WORLDWIDE MEDICAL ASSURANCE, LTD. CORP.	-	0.00%	-	0.00%	-	0.00%	-	0.00%	-	0.00%	-	0.00%	-	0.00%	-	0.00%
<b>SUB-TOTAL</b>	<b>2,359,783.47</b>	<b>1.95%</b>	<b>1,377,746.30</b>	<b>1.14%</b>	<b>22,115,474.76</b>	<b>18.29%</b>	<b>1,698,863.31</b>	<b>1.40%</b>	<b>9,031,325.73</b>	<b>7.47%</b>	<b>2,196,654.00</b>	<b>1.82%</b>	<b>8,111,818.61</b>	<b>6.71%</b>	<b>17,751,079.93</b>	<b>14.68%</b>
SEGUROS BBA CORP.	1,935.00	0.00%	(4,421.45)	0.00%	261,606.59	0.22%	20,271.66	0.02%	6,653.80	0.01%	1,900.00	0.00%	32,100.61	0.03%	-	0.00%
BUPA PANAMÁ, S.A	-	0.00%	-	0.00%	-	0.00%	-	0.00%	-	0.00%	-	0.00%	-	0.00%	-	0.00%
LA FLORESTA DE SEGUROS Y VIDA, S.A.	8,205.00	0.01%	-	0.00%	201,224.50	0.17%	53,183.40	0.04%	27,081.40	0.02%	-	0.00%	83,982.00	0.07%	(24,122.60)	-0.02%
LA REGIONAL DE SEGUROS, S.A.	-	0.00%	-	0.00%	181,481.68	0.15%	6,036.35	0.00%	-	0.00%	-	0.00%	35,129.61	0.03%	(10,668.25)	-0.01%
MERCANTIL PANAMÁ SEGUROS, S.A	-	0.00%	-	0.00%	-	0.00%	-	0.00%	-	0.00%	-	0.00%	-	0.00%	-	0.00%
SEGUROS CONFIANZA, S.A.	1,994.95	0.00%	-	0.00%	258,841.80	0.21%	16,272.67	0.01%	2,976.68	0.00%	(11.43)	0.00%	73,900.99	0.06%	-	0.00%
SEGUROS CONSTITUCIÓN, S.A.	1,523.40	0.00%	(24,793.54)	-0.02%	509,221.25	0.42%	-	0.00%	47,521.05	0.04%	9,371.39	0.01%	261,254.22	0.22%	(298,825.87)	-0.25%
<b>SUB-TOTAL</b>	<b>13,658.35</b>	<b>0.01%</b>	<b>(29,214.99)</b>	<b>-0.02%</b>	<b>1,412,375.82</b>	<b>1.15%</b>	<b>95,764.08</b>	<b>0.08%</b>	<b>84,232.93</b>	<b>0.07%</b>	<b>11,259.96</b>	<b>0.01%</b>	<b>486,367.43</b>	<b>0.39%</b>	<b>(333,616.72)</b>	<b>-0.27%</b>
<b>TOTAL</b>	<b>\$2,373,441.82</b>	<b>1.93%</b>	<b>\$1,348,531.31</b>	<b>1.09%</b>	<b>\$23,527,850.58</b>	<b>19.10%</b>	<b>\$1,794,627.39</b>	<b>1.46%</b>	<b>\$9,115,558.66</b>	<b>7.40%</b>	<b>\$2,207,913.96</b>	<b>1.79%</b>	<b>\$8,598,186.04</b>	<b>6.98%</b>	<b>\$17,417,463.21</b>	<b>14.14%</b>



**SUPERINTENDENCIA DE SEGUROS Y REASEGUROS DE PANAMA**  
**Cuadro 02. SINIESTROS BRUTOS INCURRIDOS DE SEGURO DIRECTO CON PARTICIPACIÓN EN EL MERCADO POR RAMOS**  
**Acumulado al Mes de Enero 2015**

COMPAÑIAS	SINIESTROS BRUTOS INCURRIDOS													
	Total		Vida Individual		Accidentes Personales		Salud		Colectivo de Vida		Incendio		Multiriesgos	
	Monto	%	Monto	%	Monto	%	Monto	%	Monto	%	Monto	%	Monto	%
ACE SEGUROS, S.A	(198,319.49)	-0.34%	-	0.00%	2,500.00	0.00%	-	0.00%	-	0.00%	(216,179.36)	-0.38%	(25,451.24)	-0.04%
ACERTA COMPAÑIA DE SEGUROS, S.A.	592,860.05	1.03%	74,302.70	0.13%	3,294.61	0.01%	121,634.44	0.21%	-	0.00%	(12,007.26)	-0.02%	14,180.42	0.03%
AIG. SEGUROS PANAMÁ, S.A.	(573,492.24)	-0.99%	-	0.00%	16,399.64	0.03%	-	0.00%	-	0.00%	(790,401.39)	-1.40%	-	0.00%
ALIADO SEGUROS, S.A	171,509.90	0.30%	-	0.00%	669.43	0.00%	-	0.00%	5,997.56	0.01%	-	0.00%	343.37	0.00%
ASEGURADORA ANCÓN, S.A.	2,030,573.16	3.51%	40,000.00	0.07%	2,529.36	0.00%	609,356.69	1.08%	308,199.32	0.54%	12,799.57	0.02%	7,788.72	0.01%
ASEGURADORA GLOBAL, S.A	487,135.83	0.84%	(300.00)	0.00%	168.73	0.00%	-	0.00%	109,291.54	0.19%	-	0.00%	-	0.00%
ASSA COMPAÑIA DE SEGUROS, S.A	4,912,242.70	8.50%	1,602,425.87	2.83%	9,841.24	0.02%	1,411,786.62	2.49%	560,343.15	0.99%	39,420.52	0.07%	14,010.84	0.02%
ASSICURAZIONI GENERALI, S.p.A.	3,013,587.60	5.22%	172,327.11	0.30%	83,214.16	0.15%	580,528.80	1.03%	314,713.96	0.56%	175,262.43	0.31%	32,989.69	0.06%
BANESCO SEGUROS, S.A.	283,818.13	0.49%	8,640.01	0.02%	-	0.00%	18,570.28	0.03%	41,676.05	0.07%	(52,545.55)	-0.09%	(9,514.86)	-0.02%
COMPAÑIA INTERNACIONAL DE SEGUROS, S.A.	18,540,565.02	32.09%	541,704.60	0.96%	67,303.38	0.12%	2,532,753.46	4.48%	1,549,928.78	2.74%	5,598,975.11	9.89%	8,494.65	0.02%
DEL ISTMO ASSURANCE CORP.	495,432.44	0.86%	-	0.00%	9,585.86	0.02%	6,543.77	0.01%	-	0.00%	-	0.00%	-	0.00%
GENERAL DE SEGUROS, S.A.	460,200.11	0.80%	-	0.00%	-	0.00%	-	0.00%	146,058.37	0.26%	3,520.35	0.01%	669.99	0.00%
MAPFRE PANAMÁ, S.A	8,991,151.68	15.56%	1,224,908.39	2.16%	17,691.84	0.03%	2,096,346.43	3.70%	1,943,809.20	3.43%	24,471.79	0.04%	-	0.00%
MULTIBANK SEGUROS PANAMÁ	144,377.28	0.25%	-	0.00%	-	0.00%	-	0.00%	112,377.79	0.20%	27.73	0.00%	-	0.00%
NACIONAL DE SEGUROS DE PANAMÁ Y CENTROAMÉRICA, S.A.	447,720.04	0.77%	-	0.00%	98,980.97	0.17%	-	0.00%	189.84	0.00%	100,221.08	0.18%	-	0.00%
ÓPTIMA COMPAÑIA DE SEGUROS, S.A.	312,185.48	0.54%	-	0.00%	6,609.60	0.01%	-	0.00%	14,954.24	0.03%	(59,940.91)	-0.11%	-	0.00%
PAN AMERICAN LIFE INSURANCE DE PANAMÁ, S.A	5,575,166.16	9.65%	1,168,707.85	2.07%	38,280.33	0.07%	3,581,141.54	6.33%	787,036.44	1.39%	-	0.00%	-	0.00%
SAGICOR PANAMÁ	90,000.00	0.16%	-	0.00%	-	0.00%	90,000.00	0.16%	-	0.00%	-	0.00%	-	0.00%
SEGUROS BANISTMO, S.A.	2,290,842.07	3.97%	2,253.00	0.00%	15,773.05	0.03%	-	0.00%	937,407.00	1.66%	140,367.97	0.25%	-	0.00%
SEGUROS FEDPA, S.A.	974,742.85	1.69%	-	0.00%	19,108.30	0.03%	-	0.00%	193,286.62	0.34%	50,299.82	0.09%	-	0.00%
SEGUROS SURAMERICANA, S.A.	5,501,869.60	9.52%	58,639.17	0.10%	4,245.96	0.01%	-	0.00%	1,757.10	0.00%	4,194,919.42	7.41%	-	0.00%
VIVIR COMPAÑIA DE SEGUROS, S.A.	28,869.00	0.05%	-	0.00%	-	0.00%	28,869.00	0.05%	-	0.00%	-	0.00%	-	0.00%
WORLDWIDE MEDICAL ASSURANCE, LTD. CORP.	2,020,454.58	3.50%	-	0.00%	-	0.00%	2,020,454.58	3.57%	-	0.00%	-	0.00%	-	0.00%
<b>SUB-TOTAL</b>	<b>56,593,491.95</b>	<b>97.96%</b>	<b>4,893,608.70</b>	<b>8.65%</b>	<b>396,196.46</b>	<b>0.70%</b>	<b>13,097,985.61</b>	<b>23.14%</b>	<b>7,027,026.96</b>	<b>12.42%</b>	<b>9,209,211.32</b>	<b>16.27%</b>	<b>43,511.58</b>	<b>0.08%</b>
SEGUROS BBA CORP.	110,673.11	0.19%	-	0.00%	319.72	0.00%	6,451.10	0.01%	1,000.00	0.00%	-	0.00%	-	0.00%
BUPA PANAMÁ, S.A	-	0.00%	-	0.00%	-	0.00%	-	0.00%	-	0.00%	-	0.00%	-	0.00%
LA FLORESTA DE SEGUROS Y VIDA, S.A.	236,560.80	0.41%	10,133.90	0.02%	9,749.20	0.02%	-	0.00%	-	0.00%	21,064.90	0.04%	-	0.00%
LA REGIONAL DE SEGUROS, S.A.	14,971.66	0.03%	-	0.00%	-	0.00%	-	0.00%	-	0.00%	-	0.00%	350.00	0.00%
MERCANTIL PANAMÁ SEGUROS, S.A	-	0.00%	-	0.00%	-	0.00%	-	0.00%	-	0.00%	-	0.00%	-	0.00%
SEGUROS CONFIANZA, S.A.	77,954.75	0.13%	-	0.00%	4,748.21	0.01%	-	0.00%	-	0.00%	4,166.05	0.01%	-	0.00%
SEGUROS CONSTITUCIÓN, S.A.	739,181.78	1.28%	-	0.00%	-	0.00%	-	0.00%	-	0.00%	5,259.41	0.01%	-	0.00%
<b>SUB-TOTAL</b>	<b>1,179,342.10</b>	<b>2.04%</b>	<b>10,133.90</b>	<b>0.02%</b>	<b>14,817.13</b>	<b>0.03%</b>	<b>6,451.10</b>	<b>0.01%</b>	<b>1,000.00</b>	<b>0.00%</b>	<b>30,490.36</b>	<b>0.05%</b>	<b>350.00</b>	<b>0.00%</b>
<b>TOTAL</b>	<b>\$57,772,834.05</b>	<b>100.00%</b>	<b>\$4,903,742.60</b>	<b>8.49%</b>	<b>\$411,013.59</b>	<b>0.71%</b>	<b>\$13,104,436.71</b>	<b>22.68%</b>	<b>\$7,028,026.96</b>	<b>12.16%</b>	<b>\$9,239,701.68</b>	<b>15.99%</b>	<b>\$43,861.58</b>	<b>0.08%</b>



**SUPERINTENDENCIA DE SEGUROS Y REASEGUROS DE PANAMA**  
**Cuadro 02. SINIESTROS BRUTOS INCURRIDOS DE SEGURO DIRECTO CON PARTICIPACIÓN EN EL MERCADO POR RAMOS**  
**Acumulado al Mes de Enero 2015**

COMPAÑIAS	SINIESTROS BRUTOS INCURRIDOS															
	Transporte		Casco		Automóvil		Ramos Técnicos		Resp. Civil		Robo		Fianzas		Otros	
	Monto	%	Monto	%	Monto	%	Monto	%	Monto	%	Monto	%	Monto	%	Monto	%
ACE SEGUROS, S.A	34,541.52	0.06%	-	0.00%	-	0.00%	2,218.89	0.00%	4,050.70	0.01%	-	0.00%	-	0.00%	-	0.00%
ACERTA COMPAÑÍA DE SEGUROS, S.A.	4,578.44	0.01%	652.70	0.00%	351,720.75	0.62%	(59,522.06)	-0.11%	7,568.97	0.01%	62,456.34	0.11%	-	0.00%	24,000.00	0.04%
AIG. SEGUROS PANAMÁ, S.A.	37,415.93	0.07%	-	0.00%	78,549.57	0.14%	-	0.00%	(10,048.71)	-0.02%	82,288.80	0.15%	(485.79)	0.00%	12,789.71	0.02%
ALIADO SEGUROS, S.A	521.77	0.00%	48.00	0.00%	168,781.30	0.30%	(4,883.11)	-0.01%	-	0.00%	11.68	0.00%	-	0.00%	19.90	0.00%
ASEGURADORA ANCÓN, S.A.	4,695.55	0.01%	-	0.00%	1,005,076.84	1.78%	(2,940.92)	-0.01%	2,220.00	0.00%	-	0.00%	46,947.59	0.08%	(6,099.56)	-0.01%
ASEGURADORA GLOBAL, S.A	-	0.00%	-	0.00%	334,696.64	0.59%	-	0.00%	-	0.00%	-	0.00%	-	0.00%	43,278.92	0.08%
ASSA COMPAÑÍA DE SEGUROS, S.A	213,315.95	0.38%	18,069.09	0.03%	831,913.07	1.47%	(1,110.89)	0.00%	55,071.68	0.10%	2,108.53	0.00%	1,160.00	0.00%	153,887.03	0.27%
ASSICURAZIONI GENERALI, S.p.A.	88,601.56	0.16%	39,109.27	0.07%	1,366,037.64	2.41%	44,376.94	0.08%	(2,505.67)	0.00%	55,007.36	0.10%	42,620.80	0.08%	21,303.55	0.04%
BANESCO SEGUROS, S.A.	7,807.85	0.01%	-	0.00%	269,537.85	0.48%	48,889.62	0.09%	(53,200.48)	-0.09%	(4,175.64)	-0.01%	-	0.00%	8,133.00	0.01%
COMPAÑÍA INTERNACIONAL DE SEGUROS, S.A.	84,198.21	0.15%	280,510.48	0.50%	5,057,588.52	8.94%	391,068.81	0.69%	55,590.30	0.10%	21,421.24	0.04%	1,275,976.86	2.25%	1,075,050.62	1.90%
DEL ISTMO ASSURANCE CORP.	-	0.00%	-	0.00%	-	0.00%	-	0.00%	-	0.00%	-	0.00%	479,302.81	0.85%	-	0.00%
GENERAL DE SEGUROS, S.A.	2,472.50	0.00%	-	0.00%	196,377.15	0.35%	50.14	0.00%	-	0.00%	-	0.00%	-	0.00%	111,051.61	0.20%
MAPFRE PANAMÁ, S.A	(93,357.16)	-0.16%	-	0.00%	1,762,047.11	3.11%	-	0.00%	1,641.43	0.00%	(11,598.99)	-0.02%	1,494,511.05	2.64%	530,680.59	0.94%
MULTIBANK SEGUROS PANAMÁ	-	0.00%	-	0.00%	21,226.21	0.04%	-	0.00%	-	0.00%	-	0.00%	-	0.00%	10,745.55	0.02%
NACIONAL DE SEGUROS DE PANAMÁ Y CENTROAMÉRICA, S.A.	-	0.00%	8,721.97	0.02%	206,517.04	0.36%	-	0.00%	18,089.14	0.03%	7,000.00	0.01%	8,000.00	0.01%	-	0.00%
ÓPTIMA COMPAÑÍA DE SEGUROS, S.A.	(7,070.16)	-0.01%	117,726.33	0.21%	136,368.17	0.24%	5,805.84	0.01%	21,472.01	0.04%	59,915.35	0.11%	-	0.00%	16,345.01	0.03%
PAN AMERICAN LIFE INSURANCE DE PANAMÁ, S.A	-	0.00%	-	0.00%	-	0.00%	-	0.00%	-	0.00%	-	0.00%	-	0.00%	-	0.00%
SAGICOR PANAMÁ	-	0.00%	-	0.00%	-	0.00%	-	0.00%	-	0.00%	-	0.00%	-	0.00%	-	0.00%
SEGUROS BANISTMO, S.A.	46,668.31	0.08%	-	0.00%	1,090,197.35	1.93%	15,844.78	0.03%	(549.49)	0.00%	6,772.90	0.01%	-	0.00%	36,107.20	0.06%
SEGUROS FEDPA, S.A.	(340.75)	0.00%	-	0.00%	711,979.33	1.26%	342.00	0.00%	67.53	0.00%	-	0.00%	-	0.00%	-	0.00%
SEGUROS SURAMERICANA, S.A.	8,242.79	0.01%	-	0.00%	1,032,566.44	1.82%	84,750.36	0.15%	4,184.86	0.01%	-	0.00%	3,863.42	0.01%	108,700.08	0.19%
VIVIR COMPAÑÍA DE SEGUROS, S.A.	-	0.00%	-	0.00%	-	0.00%	-	0.00%	-	0.00%	-	0.00%	-	0.00%	-	0.00%
WORLDWIDE MEDICAL ASSURANCE, LTD. CORP.	-	0.00%	-	0.00%	-	0.00%	-	0.00%	-	0.00%	-	0.00%	-	0.00%	-	0.00%
<b>SUB-TOTAL</b>	<b>432,292.31</b>	<b>0.76%</b>	<b>464,837.84</b>	<b>0.82%</b>	<b>14,621,180.98</b>	<b>25.84%</b>	<b>524,890.40</b>	<b>0.93%</b>	<b>103,652.27</b>	<b>0.18%</b>	<b>281,207.57</b>	<b>0.50%</b>	<b>3,351,896.74</b>	<b>5.92%</b>	<b>2,145,993.21</b>	<b>3.79%</b>
SEGUROS BBA CORP.	-	0.00%	-	0.00%	43,544.84	0.08%	-	0.00%	2,414.72	0.00%	310.98	0.00%	56,631.75	0.10%	-	0.00%
BUPA PANAMÁ, S.A	-	0.00%	-	0.00%	-	0.00%	-	0.00%	-	0.00%	-	0.00%	-	0.00%	-	0.00%
LA FLORESTA DE SEGUROS Y VIDA, S.A.	842.60	0.00%	-	0.00%	173,361.20	0.31%	3,183.00	0.01%	5,702.00	0.01%	-	0.00%	-	0.00%	12,524.00	0.02%
LA REGIONAL DE SEGUROS, S.A.	-	0.00%	-	0.00%	14,621.66	0.03%	-	0.00%	-	0.00%	-	0.00%	-	0.00%	-	0.00%
MERCANTIL PANAMÁ SEGUROS, S.A	-	0.00%	-	0.00%	-	0.00%	-	0.00%	-	0.00%	-	0.00%	-	0.00%	-	0.00%
SEGUROS CONFIANZA, S.A.	-	0.00%	-	0.00%	47,342.49	0.08%	-	0.00%	-	0.00%	-	0.00%	21,698.00	0.04%	-	0.00%
SEGUROS CONSTITUCIÓN, S.A.	32,013.25	0.06%	-	0.00%	362,409.10	0.64%	-	0.00%	(1,230.00)	0.00%	-	0.00%	340,730.02	0.60%	-	0.00%
<b>SUB-TOTAL</b>	<b>32,855.85</b>	<b>0.06%</b>	<b>-</b>	<b>0.00%</b>	<b>641,279.29</b>	<b>1.11%</b>	<b>3,183.00</b>	<b>0.01%</b>	<b>6,886.72</b>	<b>0.01%</b>	<b>310.98</b>	<b>0.00%</b>	<b>419,059.77</b>	<b>0.73%</b>	<b>12,524.00</b>	<b>0.02%</b>
<b>TOTAL</b>	<b>\$465,148.16</b>	<b>0.81%</b>	<b>\$464,837.84</b>	<b>0.80%</b>	<b>\$15,262,460.27</b>	<b>26.42%</b>	<b>\$528,073.40</b>	<b>0.91%</b>	<b>\$110,538.99</b>	<b>0.19%</b>	<b>\$281,518.55</b>	<b>0.49%</b>	<b>\$3,770,956.51</b>	<b>6.53%</b>	<b>\$2,158,517.21</b>	<b>3.74%</b>



**SUPERINTENDENCIA DE SEGUROS Y REASEGUROS DE PANAMA**  
**Cuadro 03. POLIZAS VIGENTES DE SEGURO DIRECTO CON PARTICIPACIÓN EN EL MERCADO POR RAMOS**  
**Acumulado al Mes de Enero 2015**

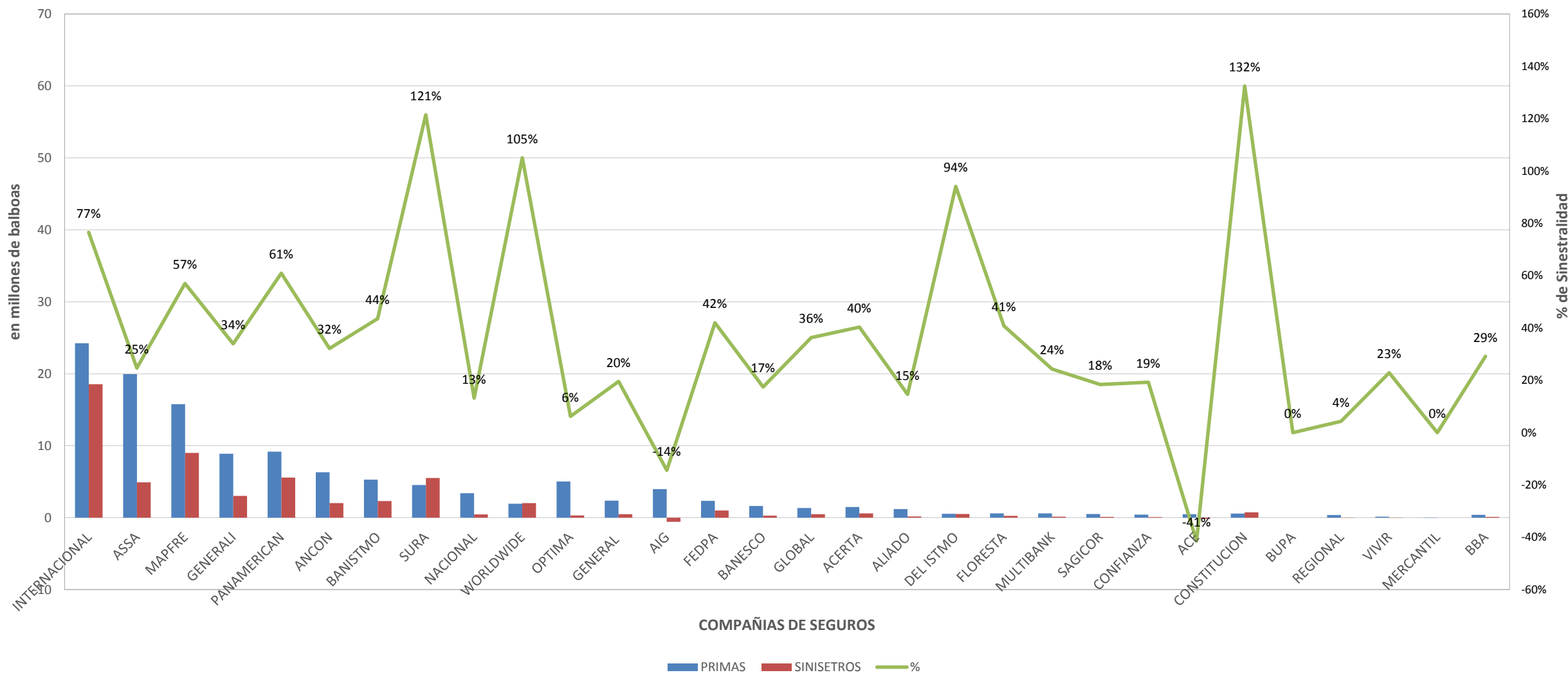
COMPAÑIAS	POLIZAS VIGENTES													
	Total		Vida Individual		Accidentes Personales		Salud		Colectivo de Vida		Incendio		Multiriesgos	
	Cantidad	%	Cantidad	%	Cantidad	%	Cantidad	%	Cantidad	%	Cantidad	%	Cantidad	%
ACE SEGUROS, S.A	49	0.00%	-	0.00%	14	0.00%	-	0.00%	3	0.00%	11	0.00%	1	0.00%
ACERTA COMPAÑIA DE SEGUROS, S.A.	1,428	0.13%	75	0.01%	35	0.00%	19	0.00%	3	0.00%	120	0.01%	40	0.00%
AIG. SEGUROS PANAMÁ, S.A.	12,329	1.09%	-	0.00%	1,269	0.12%	-	0.00%	-	0.00%	2,046	0.19%	271	0.03%
ALIADO SEGUROS, S.A	870	0.08%	-	0.00%	3	0.00%	-	0.00%	7	0.00%	64	0.01%	25	0.00%
ASEGURADORA ANCÓN, S.A.	47,495	4.20%	1,463	0.14%	567	0.05%	5,400	0.50%	1,282	0.12%	4,868	0.45%	1,177	0.11%
ASEGURADORA GLOBAL, S.A	15,682	1.39%	3	0.00%	332	0.03%	-	0.00%	4	0.00%	6,827	0.63%	-	0.00%
ASSA COMPAÑIA DE SEGUROS, S.A	119,685	10.57%	27,643	2.57%	6,672	0.62%	9,988	0.93%	2,272	0.21%	10,802	1.00%	3,546	0.33%
ASSICURAZIONI GENERALI, S.p.A.	147,160	13.00%	36,874	3.42%	3,172	0.29%	172	0.02%	240	0.02%	29,836	2.77%	11,248	1.04%
BANESCO SEGUROS, S.A.	1,228	0.11%	334	0.03%	17	0.00%	-	0.00%	7	0.00%	138	0.01%	69	0.01%
COMPAÑIA INTERNACIONAL DE SEGUROS, S.A.	205,176	18.12%	27,236	2.53%	6,611	0.61%	15,684	1.46%	406	0.04%	36,590	3.40%	1,976	0.18%
DEL ISTMO ASSURANCE CORP.	4,770	0.42%	73	0.01%	119	0.01%	162	0.02%	707	0.07%	10	0.00%	-	0.00%
GENERAL DE SEGUROS, S.A.	32,060	2.83%	-	0.00%	3	0.00%	-	0.00%	55	0.01%	31,368	2.91%	32	0.00%
MAPFRE PANAMÁ, S.A	129,640	11.45%	24,174	2.24%	1,001	0.09%	12,922	1.20%	181	0.02%	24,261	2.25%	-	0.00%
MULTIBANK SEGUROS PANAMÁ	7,902	0.70%	147	0.01%	2,426	0.23%	-	0.00%	6	0.00%	3,276	0.30%	98	0.01%
NACIONAL DE SEGUROS DE PANAMÁ Y CENTROAMÉRICA, S.A.	3,845	0.34%	20	0.00%	93	0.01%	-	0.00%	19	0.00%	76	0.01%	-	0.00%
ÓPTIMA COMPAÑIA DE SEGUROS, S.A.	10,623	0.94%	-	0.00%	339	0.03%	-	0.00%	164	0.02%	3,311	0.31%	327	0.03%
PAN AMERICAN LIFE INSURANCE DE PANAMÁ, S.A	29,870	2.64%	19,837	1.84%	8,843	0.82%	-	0.00%	1,190	0.11%	-	0.00%	-	0.00%
SAGICOR PANAMÁ	67	0.01%	23	0.00%	2	0.00%	22	0.00%	20	0.00%	-	0.00%	-	0.00%
SEGUROS BANISTMO, S.A.	98,785	8.73%	19,216	1.78%	5,690	0.53%	139	0.01%	10,443	0.97%	28,292	2.63%	-	0.00%
SEGUROS FEDPA, S.A.	101,060	8.93%	235	0.02%	17,779	1.65%	1	0.00%	525	0.05%	1,973	0.18%	283	0.03%
SEGUROS SURAMERICANA, S.A.	101,107	8.93%	27,337	2.54%	4,378	0.41%	-	0.00%	193	0.02%	14,221	1.32%	-	0.00%
VIVIR COMPAÑIA DE SEGUROS, S.A.	917	0.08%	-	0.00%	-	0.00%	898	0.08%	19	0.00%	-	0.00%	-	0.00%
WORLDWIDE MEDICAL ASSURANCE, LTD. CORP.	5,803	0.51%	136	0.01%	-	0.00%	5,667	0.53%	-	0.00%	-	0.00%	-	0.00%
<b>SUB-TOTAL</b>	<b>1,077,551</b>	<b>95.18%</b>	<b>184,826</b>	<b>17.15%</b>	<b>59,365</b>	<b>5.51%</b>	<b>51,074</b>	<b>4.74%</b>	<b>17,746</b>	<b>1.65%</b>	<b>198,090</b>	<b>18.38%</b>	<b>19,093</b>	<b>1.77%</b>
SEGUROS BBA CORP.	3,009	0.27%	25	0.00%	93	0.01%	81	0.01%	100	0.01%	53	0.00%	11	0.00%
BUPA PANAMÁ, S.A	-	0.00%	-	0.00%	-	0.00%	-	0.00%	-	0.00%	-	0.00%	-	0.00%
LA FLORESTA DE SEGUROS Y VIDA, S.A.	8,794	0.78%	137	0.01%	58	0.01%	406	0.04%	28	0.00%	649	0.06%	-	0.00%
LA REGIONAL DE SEGUROS, S.A.	384	0.03%	4	0.00%	-	0.00%	-	0.00%	-	0.00%	24	0.00%	20	0.00%
MERCANTIL PANAMÁ SEGUROS, S.A	23	0.00%	9	0.00%	14	0.00%	-	0.00%	-	0.00%	-	0.00%	-	0.00%
SEGUROS CONFIANZA, S.A.	23,850	2.11%	589	0.05%	104	0.01%	-	0.00%	128	0.01%	376	0.03%	210	0.02%
SEGUROS CONSTITUCIÓN, S.A.	18,464	1.63%	378	0.04%	103	0.01%	-	0.00%	14	0.00%	878	0.08%	-	0.00%
<b>SUB-TOTAL</b>	<b>54,524</b>	<b>4.82%</b>	<b>1,142</b>	<b>0.10%</b>	<b>372</b>	<b>0.03%</b>	<b>487</b>	<b>0.04%</b>	<b>270</b>	<b>0.02%</b>	<b>1,980</b>	<b>0.17%</b>	<b>241</b>	<b>0.02%</b>
<b>TOTAL</b>	<b>1,132,075</b>	<b>100.00%</b>	<b>185,968</b>	<b>16.43%</b>	<b>59,737</b>	<b>5.28%</b>	<b>51,561</b>	<b>4.55%</b>	<b>18,016</b>	<b>1.59%</b>	<b>200,070</b>	<b>17.67%</b>	<b>19,334</b>	<b>1.71%</b>

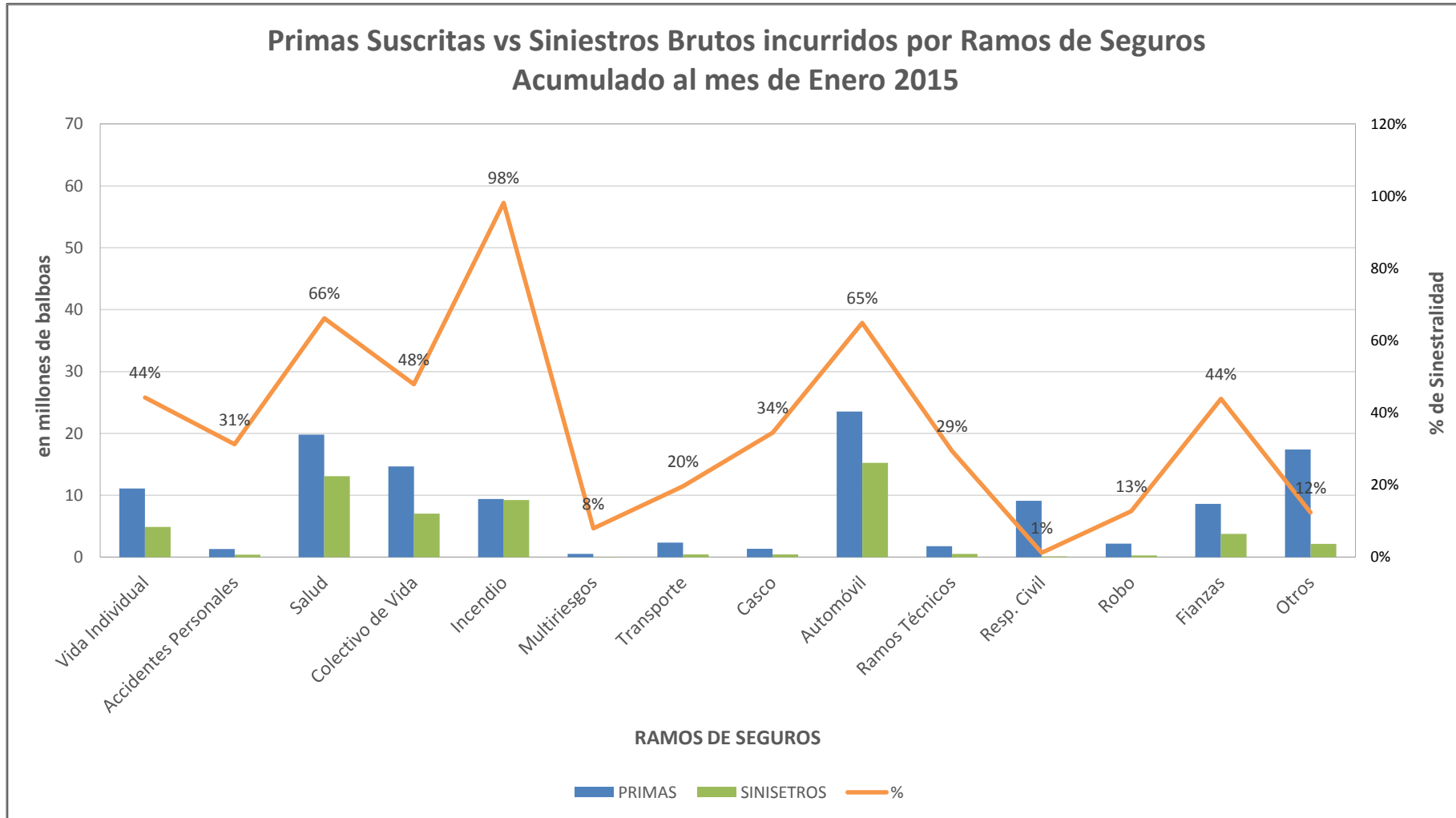


**SUPERINTENDENCIA DE SEGUROS Y REASEGUROS DE PANAMA**  
**Cuadro 03. POLIZAS VIGENTES DE SEGURO DIRECTO CON PARTICIPACIÓN EN EL MERCADO POR RAMOS**  
**Acumulado al Mes de Enero 2015**

COMPAÑIAS	POLIZAS VIGENTES															
	Transporte		Casco		Automóvil		Ramos Técnicos		Resp. Civil		Robo		Fianzas		Otros	
	Cantidad	%	Cantidad	%	Cantidad	%	Cantidad	%	Cantidad	%	Cantidad	%	Cantidad	%	Cantidad	%
ACE SEGUROS, S.A	2	0.00%	-	0.00%	-	0.00%	1	0.00%	17	0.00%	-	0.00%	-	0.00%	-	0.00%
ACERTA COMPAÑÍA DE SEGUROS, S.A.	23	0.00%	1	0.00%	957	0.09%	26	0.00%	46	0.00%	14	0.00%	59	0.01%	10	0.00%
AIG. SEGUROS PANAMÁ, S.A.	21	0.00%	8	0.00%	7,956	0.74%	-	0.00%	422	0.04%	9	0.00%	293	0.03%	34	0.00%
ALIADO SEGUROS, S.A	6	0.00%	5	0.00%	678	0.06%	13	0.00%	13	0.00%	4	0.00%	41	0.00%	11	0.00%
ASEGURADORA ANCÓN, S.A.	385	0.04%	83	0.01%	29,229	2.71%	447	0.04%	599	0.06%	116	0.01%	1,711	0.16%	168	0.02%
ASEGURADORA GLOBAL, S.A	-	0.00%	-	0.00%	8,077	0.75%	-	0.00%	-	0.00%	-	0.00%	404	0.04%	35	0.00%
ASSA COMPAÑÍA DE SEGUROS, S.A	814	0.08%	191	0.02%	31,165	2.89%	11,025	1.02%	2,681	0.25%	2,178	0.20%	9,378	0.87%	1,330	0.12%
ASSICURAZIONI GENERALI, S.p.A.	7,099	0.66%	344	0.03%	52,946	4.91%	1,818	0.17%	1,991	0.18%	558	0.05%	641	0.06%	221	0.02%
BANESCO SEGUROS, S.A.	10	0.00%	3	0.00%	442	0.04%	33	0.00%	62	0.01%	5	0.00%	102	0.01%	6	0.00%
COMPAÑÍA INTERNACIONAL DE SEGUROS, S.A.	16,206	1.50%	120	0.01%	88,127	8.18%	1,354	0.13%	1,795	0.17%	389	0.04%	8,454	0.78%	228	0.02%
DEL ISTMO ASSURANCE CORP.	-	0.00%	-	0.00%	-	0.00%	66	0.01%	83	0.01%	-	0.00%	3,550	0.33%	-	0.00%
GENERAL DE SEGUROS, S.A.	7	0.00%	-	0.00%	509	0.05%	22	0.00%	16	0.00%	5	0.00%	36	0.00%	7	0.00%
MAPFRE PANAMÁ, S.A	217	0.02%	64	0.01%	58,756	5.45%	-	0.00%	1,214	0.11%	408	0.04%	2,927	0.27%	3,515	0.33%
MULTIBANK SEGUROS PANAMÁ	1	0.00%	1	0.00%	1,644	0.15%	96	0.01%	52	0.00%	16	0.00%	136	0.01%	3	0.00%
NACIONAL DE SEGUROS DE PANAMÁ Y CENTROAMÉRICA, S.A.	7	0.00%	18	0.00%	3,239	0.30%	39	0.00%	38	0.00%	44	0.00%	249	0.02%	3	0.00%
ÓPTIMA COMPAÑÍA DE SEGUROS, S.A.	170	0.02%	61	0.01%	4,315	0.40%	328	0.03%	502	0.05%	140	0.01%	897	0.08%	69	0.01%
PAN AMERICAN LIFE INSURANCE DE PANAMÁ, S.A	-	0.00%	-	0.00%	-	0.00%	-	0.00%	-	0.00%	-	0.00%	-	0.00%	-	0.00%
SAGICOR PANAMÁ	-	0.00%	-	0.00%	-	0.00%	-	0.00%	-	0.00%	-	0.00%	-	0.00%	-	0.00%
SEGUROS BANISTMO, S.A.	410	0.04%	49	0.00%	32,391	3.01%	634	0.06%	601	0.06%	397	0.04%	394	0.04%	129	0.01%
SEGUROS FEDPA, S.A.	276	0.03%	9	0.00%	79,393	7.37%	76	0.01%	181	0.02%	79	0.01%	249	0.02%	1	0.00%
SEGUROS SURAMERICANA, S.A.	477	0.04%	-	0.00%	45,911	4.26%	993	0.09%	5,050	0.47%	164	0.02%	2,359	0.22%	24	0.00%
VIVIR COMPAÑÍA DE SEGUROS, S.A.	-	0.00%	-	0.00%	-	0.00%	-	0.00%	-	0.00%	-	0.00%	-	0.00%	-	0.00%
WORLDWIDE MEDICAL ASSURANCE, LTD. CORP.	-	0.00%	-	0.00%	-	0.00%	-	0.00%	-	0.00%	-	0.00%	-	0.00%	-	0.00%
<b>SUB-TOTAL</b>	<b>26,131</b>	<b>2.43%</b>	<b>957</b>	<b>0.09%</b>	<b>445,735</b>	<b>41.37%</b>	<b>16,971</b>	<b>1.57%</b>	<b>15,363</b>	<b>1.43%</b>	<b>4,526</b>	<b>0.42%</b>	<b>31,880</b>	<b>2.96%</b>	<b>5,794</b>	<b>0.54%</b>
SEGUROS BBA CORP.	10	0.00%	4	0.00%	2,548	0.24%	13	0.00%	17	0.00%	3	0.00%	51	0.00%	-	0.00%
BUPA PANAMÁ, S.A	-	0.00%	-	0.00%	-	0.00%	-	0.00%	-	0.00%	-	0.00%	-	0.00%	-	0.00%
LA FLORESTA DE SEGUROS Y VIDA, S.A.	160	0.01%	-	0.00%	5,408	0.50%	24	0.00%	462	0.04%	-	0.00%	1,311	0.12%	151	0.01%
LA REGIONAL DE SEGUROS, S.A.	-	0.00%	-	0.00%	270	0.03%	3	0.00%	-	0.00%	-	0.00%	47	0.00%	16	0.00%
MERCANTIL PANAMÁ SEGUROS, S.A	-	0.00%	-	0.00%	-	0.00%	-	0.00%	-	0.00%	-	0.00%	-	0.00%	-	0.00%
SEGUROS CONFIANZA, S.A.	20	0.00%	2	0.00%	21,302	1.98%	71	0.01%	123	0.01%	17	0.00%	908	0.08%	-	0.00%
SEGUROS CONSTITUCIÓN, S.A.	96	0.01%	41	0.00%	15,497	1.44%	-	0.00%	287	0.03%	40	0.00%	1,046	0.10%	84	0.01%
<b>SUB-TOTAL</b>	<b>286</b>	<b>0.03%</b>	<b>47</b>	<b>0.00%</b>	<b>45,025</b>	<b>3.98%</b>	<b>111</b>	<b>0.01%</b>	<b>889</b>	<b>0.08%</b>	<b>60</b>	<b>0.01%</b>	<b>3,363</b>	<b>0.30%</b>	<b>251</b>	<b>0.02%</b>
<b>TOTAL</b>	<b>26,417</b>	<b>2.33%</b>	<b>1,004</b>	<b>0.09%</b>	<b>490,760</b>	<b>43.35%</b>	<b>17,082</b>	<b>1.51%</b>	<b>16,252</b>	<b>1.44%</b>	<b>4,586</b>	<b>0.41%</b>	<b>35,243</b>	<b>3.11%</b>	<b>6,045</b>	<b>0.53%</b>

## Primas Suscritas vs Siniestros Brutos incurridos por Compañías de Seguros Acumulado al mes de Enero 2015









Superintendencia de Seguros  
y Reaseguros de Panamá  
1956

## SUPERINTENDENCIA DE SEGUROS Y REASEGUROS DE PANAMA

### Polizas Vigentes por Ramos de Seguros Acumulado al mes de Enero 2015

