



**SUPERINTENDENCIA DE SEGUROS Y REASEGUROS DE PANAMA**  
**Cuadro 01. PRIMAS SUSCRITAS DE SEGURO DIRECTO CON PARTICIPACIÓN EN EL MERCADO POR RAMOS**  
**Acumulado al Mes de Marzo 2015**

COMPAÑIAS	PRIMAS SUSCRITAS													
	Total		Vida Individual		Accidentes Personales		Salud		Colectivo de Vida		Incendio		Multirisgos	
	Monto	%	Monto	%	Monto	%	Monto	%	Monto	%	Monto	%	Monto	%
ACE SEGUROS, S.A	1,193,420.31	0.35%	-	0.00%	192,929.33	0.06%	-	0.00%	4,987.34	0.00%	210,714.10	0.06%	28,399.64	0.01%
ACERTA COMPAÑIA DE SEGUROS, S.A.	4,239,822.81	1.26%	162,687.85	0.05%	108,478.98	0.03%	495,807.94	0.15%	79,180.88	0.02%	347,764.95	0.11%	44,660.44	0.01%
AIG. SEGUROS PANAMÁ, S.A.	7,150,575.56	2.12%	-	0.00%	254,541.06	0.08%	-	0.00%	-	0.00%	1,520,050.94	0.46%	(39,315.05)	-0.01%
ALIADO SEGUROS, S.A	2,772,211.54	0.82%	-	0.00%	22,143.93	0.01%	-	0.00%	229,550.16	0.07%	422,332.88	0.13%	29,119.45	0.01%
ASEGURADORA ANCÓN, S.A.	18,060,717.63	5.35%	114,133.96	0.03%	131,898.01	0.04%	2,828,585.56	0.85%	1,217,911.94	0.37%	1,049,020.46	0.32%	79,942.05	0.02%
ASEGURADORA GLOBAL, S.A	4,686,459.45	1.39%	20,473.10	0.01%	1,333.01	0.00%	-	0.00%	2,035,992.04	0.61%	191,884.47	0.06%	-	0.00%
ASSA COMPAÑIA DE SEGUROS, S.A	49,503,424.82	14.65%	5,592,278.46	1.69%	399,392.47	0.12%	8,860,615.58	2.68%	6,786,249.07	2.05%	2,971,766.64	0.90%	162,487.39	0.05%
ASSICURAZIONI GENERALI, S.p.A.	26,542,429.46	7.86%	5,882,018.47	1.78%	771,650.41	0.23%	2,793,786.90	0.84%	1,382,187.65	0.42%	3,778,906.55	1.14%	779,042.21	0.24%
BANESCO SEGUROS, S.A.	5,269,951.47	1.56%	227,304.03	0.07%	14,922.55	0.00%	152,892.43	0.05%	925,457.93	0.28%	354,302.36	0.11%	300,675.40	0.09%
COMPAÑIA INTERNACIONAL DE SEGUROS, S.A.	62,108,902.96	18.38%	5,225,034.13	1.58%	1,002,879.12	0.30%	11,536,779.62	3.48%	6,742,493.85	2.04%	3,139,253.70	0.95%	89,294.88	0.03%
DEL ISTMO ASSURANCE CORP.	2,184,967.18	0.65%	25,405.08	0.01%	8,402.87	0.00%	283,506.70	0.09%	(2,985.55)	0.00%	5,247.77	0.00%	-	0.00%
GENERAL DE SEGUROS, S.A.	7,777,686.67	2.30%	-	0.00%	2,789.24	0.00%	-	0.00%	3,864,802.90	1.17%	916,373.38	0.28%	23,713.26	0.01%
MAPFRE PANAMÁ, S.A	48,953,089.57	14.49%	5,394,877.06	1.63%	290,491.12	0.09%	8,800,171.23	2.66%	5,898,517.72	1.78%	2,230,982.06	0.67%	-	0.00%
MULTIBANK SEGUROS PANAMÁ	1,777,914.68	0.53%	15,162.48	0.00%	31,904.81	0.01%	-	0.00%	1,065,690.47	0.32%	138,641.35	0.04%	4,214.13	0.00%
NACIONAL DE SEGUROS DE PANAMÁ Y CENTROAMÉRICA, S.A.	10,163,190.98	3.01%	(41,542.29)	-0.01%	82,253.30	0.02%	-	0.00%	14,641.94	0.00%	1,509,518.03	0.46%	-	0.00%
ÓPTIMA COMPAÑIA DE SEGUROS, S.A.	8,353,643.89	2.47%	-	0.00%	204,664.74	0.06%	-	0.00%	497,989.82	0.15%	519,627.31	0.16%	28,879.61	0.01%
PAN AMERICAN LIFE INSURANCE DE PANAMÁ, S.A	25,860,276.16	7.65%	7,027,073.96	2.12%	620,808.67	0.19%	13,591,021.25	4.10%	4,621,372.28	1.40%	-	0.00%	-	0.00%
SAGICOR PANAMÁ	1,424,112.19	0.42%	91,177.09	0.03%	20,107.18	0.01%	1,055,962.26	0.32%	256,865.66	0.08%	-	0.00%	-	0.00%
SEGUROS BANISTMO, S.A.	14,425,898.54	4.27%	1,341,514.44	0.41%	269,997.42	0.08%	288,753.13	0.09%	4,037,470.73	1.22%	1,975,383.88	0.60%	-	0.00%
SEGUROS FEDPA, S.A.	5,623,828.96	1.66%	14,110.66	0.00%	421,728.74	0.13%	10,470.12	0.00%	1,019,257.19	0.31%	70,989.30	0.02%	5,257.68	0.00%
SEGUROS SURAMERICANA, S.A.	13,786,090.85	4.08%	3,378,381.56	1.02%	273,653.48	0.08%	-	0.00%	368,941.83	0.11%	1,262,495.07	0.38%	-	0.00%
VIVIR COMPAÑIA DE SEGUROS, S.A.	407,805.71	0.12%	-	0.00%	-	0.00%	312,446.76	0.09%	95,358.95	0.03%	-	0.00%	-	0.00%
WORLDWIDE MEDICAL ASSURANCE, LTD. CORP.	8,843,636.67	2.62%	2,712,850.48	0.82%	1,024.47	0.00%	6,068,713.51	1.83%	61,048.21	0.02%	-	0.00%	-	0.00%
<b>SUB-TOTAL</b>	<b>331,110,058.06</b>	<b>98.01%</b>	<b>37,182,940.52</b>	<b>11.23%</b>	<b>5,127,994.91</b>	<b>1.55%</b>	<b>57,079,512.99</b>	<b>17.24%</b>	<b>41,202,983.01</b>	<b>12.44%</b>	<b>22,615,255.20</b>	<b>6.83%</b>	<b>1,536,371.09</b>	<b>0.46%</b>
SEGUROS BBA CORP.	1,127,474.18	0.33%	5,843.86	0.00%	59,212.81	0.02%	14,144.95	0.00%	40,512.82	0.01%	47,749.45	0.01%	7,249.60	0.00%
BUPA PANAMÁ, S.A	7,912.00	0.00%	-	0.00%	-	0.00%	7,912.00	0.00%	-	0.00%	-	0.00%	-	0.00%
LA FLORESTA DE SEGUROS Y VIDA, S.A.	2,138,587.60	0.63%	14,836.10	0.00%	4,498.00	0.00%	193,596.60	0.06%	24,552.80	0.01%	251,456.20	0.08%	-	0.00%
LA REGIONAL DE SEGUROS, S.A.	911,625.27	0.27%	15,521.70	0.00%	(401.89)	0.00%	-	0.00%	7,609.10	0.00%	165,161.47	0.05%	34,413.76	0.01%
MERCANTIL PANAMÁ SEGUROS, S.A	51,453.10	0.02%	24,373.13	0.01%	3,179.01	0.00%	1,143.00	0.00%	-	0.00%	-	0.00%	4,237.45	0.00%
SEGUROS CONFIANZA, S.A.	1,310,262.03	0.39%	52,918.68	0.02%	12,721.34	0.00%	-	0.00%	7,733.08	0.00%	149,375.92	0.05%	27,792.95	0.01%
SEGUROS CONSTITUCIÓN, S.A.	1,170,488.16	0.35%	56,118.08	0.02%	3,335.58	0.00%	4,094.00	0.00%	25,419.77	0.01%	163,432.90	0.05%	-	0.00%
<b>SUB-TOTAL</b>	<b>6,717,802.34</b>	<b>1.99%</b>	<b>169,611.55</b>	<b>0.05%</b>	<b>82,544.85</b>	<b>0.02%</b>	<b>220,890.55</b>	<b>0.07%</b>	<b>105,827.57</b>	<b>0.03%</b>	<b>777,175.94</b>	<b>0.23%</b>	<b>73,693.76</b>	<b>0.02%</b>
<b>TOTAL</b>	<b>\$337,827,860.40</b>	<b>100.00%</b>	<b>\$37,352,552.07</b>	<b>11.06%</b>	<b>\$5,210,539.76</b>	<b>1.54%</b>	<b>\$57,300,403.54</b>	<b>16.96%</b>	<b>\$41,308,810.58</b>	<b>12.23%</b>	<b>\$23,392,431.14</b>	<b>6.92%</b>	<b>\$1,610,064.85</b>	<b>0.48%</b>

**SUPERINTENDENCIA DE SEGUROS Y REASEGUROS DE PANAMA**  
**Cuadro 01. PRIMAS SUSCRITAS DE SEGURO DIRECTO CON PARTICIPACIÓN EN EL MERCADO POR RAMOS**  
**Acumulado al Mes de Marzo 2015**

COMPAÑIAS	PRIMAS SUSCRITAS															
	Transporte		Casco		Automóvil		Ramos Técnicos		Resp. Civil		Robo		Fianzas		Otros	
	Monto	%	Monto	%	Monto	%	Monto	%	Monto	%	Monto	%	Monto	%	Monto	%
ACE SEGUROS, S.A	152,489.00	0.05%	-	0.00%	-	0.00%	11,107.28	0.00%	508,936.76	0.15%	-	0.00%	83,856.86	0.03%	-	0.00%
ACERTA COMPAÑIA DE SEGUROS, S.A.	122,145.90	0.04%	87,957.18	0.03%	1,678,426.21	0.51%	295,211.21	0.09%	236,629.65	0.07%	70,516.61	0.02%	499,596.53	0.15%	10,758.48	0.00%
AIG. SEGUROS PANAMÁ, S.A.	213,091.56	0.06%	223,097.85	0.07%	969,764.67	0.29%	-	0.00%	358,021.62	0.11%	325,213.23	0.10%	1,303,975.94	0.39%	2,022,133.74	0.61%
ALIADO SEGUROS, S.A	150,578.58	0.05%	20,615.14	0.01%	1,307,297.80	0.39%	91,098.93	0.03%	136,028.76	0.04%	7,324.70	0.00%	214,053.18	0.06%	142,068.03	0.04%
ASEGURADORA ANCÓN, S.A.	148,037.01	0.04%	177,067.27	0.05%	5,013,009.56	1.51%	125,570.67	0.04%	752,303.29	0.23%	30,465.16	0.01%	6,147,196.37	1.86%	245,576.32	0.07%
ASEGURADORA GLOBAL, S.A	-	0.00%	-	0.00%	1,269,818.09	0.38%	-	0.00%	-	0.00%	-	0.00%	206,546.74	0.06%	960,412.00	0.29%
ASSA COMPAÑIA DE SEGUROS, S.A	886,729.05	0.27%	2,133,245.30	0.64%	5,975,175.36	1.80%	466,601.77	0.14%	2,922,796.24	0.88%	710,580.66	0.21%	1,821,266.70	0.55%	9,814,240.13	2.96%
ASSICURAZIONI GENERALI, S.p.A.	608,006.96	0.18%	294,153.63	0.09%	6,930,128.68	2.09%	2,484,396.08	0.75%	550,707.37	0.17%	165,575.15	0.05%	68,729.85	0.02%	53,139.55	0.02%
BANESCO SEGUROS, S.A.	193,370.28	0.06%	179,520.74	0.05%	1,012,144.59	0.31%	329,155.91	0.10%	263,622.04	0.08%	50,256.62	0.02%	598,415.17	0.18%	667,911.42	0.20%
COMPAÑIA INTERNACIONAL DE SEGUROS, S.A.	2,339,870.91	0.71%	1,056,425.58	0.32%	8,464,392.49	2.56%	961,493.19	0.29%	3,956,431.30	1.19%	326,864.92	0.10%	2,642,624.63	0.80%	14,625,064.64	4.42%
DEL ISTMO ASSURANCE CORP.	150.00	0.00%	-	0.00%	-	0.00%	66,944.83	0.02%	392,048.59	0.12%	5,000.00	0.00%	1,401,246.89	0.42%	-	0.00%
GENERAL DE SEGUROS, S.A.	73,062.96	0.02%	500.00	0.00%	988,790.16	0.30%	178,076.20	0.05%	179,148.49	0.05%	15,306.24	0.00%	242,066.08	0.07%	1,293,057.76	0.39%
MAPFRE PANAMÁ, S.A	1,274,608.90	0.38%	629,017.61	0.19%	8,769,005.27	2.65%	-	0.00%	975,247.34	0.29%	1,640,752.95	0.50%	6,154,667.94	1.86%	6,894,750.37	2.08%
MULTIBANK SEGUROS PANAMÁ	1,639.72	0.00%	1,382.40	0.00%	252,176.89	0.08%	28,913.12	0.01%	8,987.84	0.00%	5,104.94	0.00%	32,054.21	0.01%	192,042.32	0.06%
NACIONAL DE SEGUROS DE PANAMÁ Y CENTROAMÉRICA, S.A.	22,472.66	0.01%	56,711.50	0.02%	980,041.52	0.30%	51,425.50	0.02%	2,019,617.67	0.61%	62,918.26	0.02%	5,404,602.92	1.63%	529.97	0.00%
ÓPTIMA COMPAÑIA DE SEGUROS, S.A.	182,907.55	0.06%	39,564.31	0.01%	667,667.91	0.20%	276,862.54	0.08%	4,313,521.49	1.30%	438,489.19	0.13%	286,293.45	0.09%	897,175.97	0.27%
PAN AMERICAN LIFE INSURANCE DE PANAMÁ, S.A	-	0.00%	-	0.00%	-	0.00%	-	0.00%	-	0.00%	-	0.00%	-	0.00%	-	0.00%
SAGICOR PANAMÁ	-	0.00%	-	0.00%	-	0.00%	-	0.00%	-	0.00%	-	0.00%	-	0.00%	-	0.00%
SEGUROS BANISTMO, S.A.	240,219.40	0.07%	55,454.50	0.02%	4,911,801.70	1.48%	119,520.49	0.04%	104,552.07	0.03%	312,248.71	0.09%	79,686.26	0.02%	689,295.81	0.21%
SEGUROS FEDPA, S.A.	18,012.11	0.01%	595.62	0.00%	3,859,692.99	1.17%	138.93	0.00%	33,206.81	0.01%	142,087.85	0.04%	28,229.77	0.01%	51.19	0.00%
SEGUROS SURAMERICANA, S.A.	607,836.68	0.18%	-	0.00%	5,513,457.00	1.67%	346,262.15	0.10%	299,570.61	0.09%	38,906.91	0.01%	942,773.21	0.28%	753,812.35	0.23%
VIVIR COMPAÑIA DE SEGUROS, S.A.	-	0.00%	-	0.00%	-	0.00%	-	0.00%	-	0.00%	-	0.00%	-	0.00%	-	0.00%
WORLDWIDE MEDICAL ASSURANCE, LTD. CORP.	-	0.00%	-	0.00%	-	0.00%	-	0.00%	-	0.00%	-	0.00%	-	0.00%	-	0.00%
<b>SUB-TOTAL</b>	<b>7,235,229.23</b>	<b>2.19%</b>	<b>4,955,308.63</b>	<b>1.50%</b>	<b>58,562,790.89</b>	<b>17.69%</b>	<b>5,832,778.80</b>	<b>1.76%</b>	<b>18,011,377.94</b>	<b>5.44%</b>	<b>4,347,612.10</b>	<b>1.31%</b>	<b>28,157,882.70</b>	<b>8.50%</b>	<b>39,262,020.05</b>	<b>11.86%</b>
SEGUROS BBA CORP.	2,444.97	0.00%	(11,160.78)	0.00%	732,431.36	0.22%	42,524.93	0.01%	28,002.28	0.01%	1,913.91	0.00%	156,604.02	0.05%	-	0.00%
BUPA PANAMÁ, S.A	-	0.00%	-	0.00%	-	0.00%	-	0.00%	-	0.00%	-	0.00%	-	0.00%	-	0.00%
LA FLORESTA DE SEGUROS Y VIDA, S.A.	21,459.70	0.01%	-	0.00%	742,811.40	0.22%	207,429.60	0.06%	336,397.30	0.10%	-	0.00%	264,110.40	0.08%	77,439.50	0.02%
LA REGIONAL DE SEGUROS, S.A.	-	0.00%	-	0.00%	569,121.63	0.17%	5,859.91	0.00%	-	0.00%	-	0.00%	85,394.15	0.03%	28,945.44	0.01%
MERCANTIL PANAMÁ SEGUROS, S.A	-	0.00%	-	0.00%	18,520.51	0.01%	-	0.00%	-	0.00%	-	0.00%	-	0.00%	-	0.00%
SEGUROS CONFIANZA, S.A.	6,264.17	0.00%	(3,000.00)	0.00%	820,583.98	0.25%	34,152.73	0.01%	19,145.39	0.01%	2,737.49	0.00%	179,836.30	0.05%	-	0.00%
SEGUROS CONSTITUCIÓN, S.A.	(14.14)	0.00%	266,529.57	0.08%	1,312,413.34	0.40%	109,582.69	0.03%	(445,565.55)	-0.13%	50,014.32	0.02%	615,929.23	0.19%	(990,801.63)	-0.30%
<b>SUB-TOTAL</b>	<b>30,154.70</b>	<b>0.01%</b>	<b>252,368.79</b>	<b>0.07%</b>	<b>4,195,882.22</b>	<b>1.24%</b>	<b>399,549.86</b>	<b>0.12%</b>	<b>(62,020.58)</b>	<b>-0.02%</b>	<b>54,665.72</b>	<b>0.02%</b>	<b>1,301,874.10</b>	<b>0.39%</b>	<b>(884,416.69)</b>	<b>-0.26%</b>
<b>TOTAL</b>	<b>\$7,265,383.93</b>	<b>2.15%</b>	<b>\$5,207,677.42</b>	<b>1.54%</b>	<b>\$62,758,673.11</b>	<b>18.58%</b>	<b>\$6,232,328.66</b>	<b>1.84%</b>	<b>\$17,949,357.36</b>	<b>5.31%</b>	<b>\$4,402,277.82</b>	<b>1.30%</b>	<b>\$29,459,756.80</b>	<b>8.72%</b>	<b>\$38,377,603.36</b>	<b>11.36%</b>



**SUPERINTENDENCIA DE SEGUROS Y REASEGUROS DE PANAMA**  
**Cuadro 02. SINIESTROS BRUTOS INCURRIDOS DE SEGURO DIRECTO CON PARTICIPACIÓN EN EL MERCADO POR RAMOS**  
**Acumulado al Mes de Marzo 2015**

COMPAÑIAS	SINIESTROS BRUTOS INCURRIDOS													
	Total		Vida Individual		Accidentes Personales		Salud		Colectivo de Vida		Incendio		Multirisgos	
	Monto	%	Monto	%	Monto	%	Monto	%	Monto	%	Monto	%	Monto	%
ACE SEGUROS, S.A	118,545.63	0.09%	-	0.00%	12,893.00	0.01%	-	0.00%	-	0.00%	(75,041.69)	-0.06%	15,084.71	0.01%
ACERTA COMPAÑÍA DE SEGUROS, S.A.	2,345,457.94	1.69%	74,302.70	0.05%	61,138.26	0.04%	355,989.24	0.26%	30,500.00	0.02%	740,943.55	0.55%	14,792.01	0.01%
AIG. SEGUROS PANAMÁ, S.A.	739,782.80	0.53%	-	0.00%	138,122.89	0.10%	-	0.00%	-	0.00%	174,407.78	0.13%	-	0.00%
ALIADO SEGUROS, S.A	665,207.33	0.48%	-	0.00%	22,964.76	0.02%	-	0.00%	9,582.09	0.01%	7,103.66	0.01%	51,843.37	0.04%
ASEGURADORA ANCÓN, S.A.	6,912,804.79	4.99%	140,000.00	0.10%	4,568.17	0.00%	1,924,711.20	1.42%	778,568.33	0.57%	81,135.73	0.06%	5,834.74	0.00%
ASEGURADORA GLOBAL, S.A	1,096,323.26	0.79%	(300.00)	0.00%	484.65	0.00%	-	0.00%	315,559.13	0.23%	14,391.95	0.01%	-	0.00%
ASSA COMPAÑÍA DE SEGUROS, S.A	14,583,893.85	10.53%	2,207,985.42	1.62%	9,064.38	0.01%	5,171,460.88	3.81%	1,802,462.02	1.33%	(483,543.26)	-0.36%	74,127.04	0.05%
ASSICURAZIONI GENERALI, S.p.A.	9,890,637.32	7.14%	607,099.23	0.45%	168,344.95	0.12%	2,033,842.57	1.50%	1,048,257.53	0.77%	724,418.67	0.53%	362,318.04	0.27%
BANESCO SEGUROS, S.A.	1,372,661.83	0.99%	(67,620.28)	-0.05%	5,000.00	0.00%	99,182.27	0.07%	189,811.62	0.14%	(18,375.13)	-0.01%	(32,600.88)	-0.02%
COMPAÑÍA INTERNACIONAL DE SEGUROS, S.A.	25,952,852.90	18.74%	882,456.56	0.65%	176,929.02	0.13%	7,789,006.82	5.73%	2,932,006.79	2.16%	840,901.57	0.62%	(31,810.82)	-0.02%
DEL ISTMO ASSURANCE CORP.	627,974.57	0.45%	-	0.00%	11,564.86	0.01%	36,485.24	0.03%	-	0.00%	-	0.00%	-	0.00%
GENERAL DE SEGUROS, S.A.	1,773,539.08	1.28%	-	0.00%	-	0.00%	-	0.00%	823,488.04	0.61%	12,423.36	0.01%	1,523.86	0.00%
MAPFRE PANAMÁ, S.A	25,884,433.31	18.69%	3,338,494.03	2.46%	162,417.01	0.12%	6,398,289.84	4.71%	3,971,303.94	2.92%	200,375.59	0.15%	-	0.00%
MULTIBANK SEGUROS PANAMÁ	576,832.30	0.42%	-	0.00%	-	0.00%	-	0.00%	417,054.26	0.31%	15,027.73	0.01%	-	0.00%
NACIONAL DE SEGUROS DE PANAMÁ Y CENTROAMÉRICA, S.A.	887,325.87	0.64%	-	0.00%	253,917.17	0.19%	-	0.00%	189.81	0.00%	26,132.17	0.02%	-	0.00%
ÓPTIMA COMPAÑÍA DE SEGUROS, S.A.	1,967,089.59	1.42%	-	0.00%	14,477.24	0.01%	-	0.00%	116,836.01	0.09%	82,267.90	0.06%	(2,439.36)	0.00%
PAN AMERICAN LIFE INSURANCE DE PANAMÁ, S.A	17,293,952.21	12.48%	1,366,323.55	1.01%	88,257.34	0.06%	14,710,887.50	10.83%	1,128,483.82	0.83%	-	0.00%	-	0.00%
SAGICOR PANAMÁ	398,936.63	0.29%	-	0.00%	-	0.00%	398,936.63	0.29%	-	0.00%	-	0.00%	-	0.00%
SEGUROS BANISTMO, S.A.	5,382,070.73	3.89%	137,937.92	0.10%	63,412.09	0.05%	4.00	0.00%	2,038,689.21	1.50%	238,105.19	0.18%	-	0.00%
SEGUROS FEDPA, S.A.	3,653,643.89	2.64%	6,500.00	0.00%	71,939.20	0.05%	-	0.00%	733,879.51	0.54%	518,320.12	0.38%	50.00	0.00%
SEGUROS SURAMERICANA, S.A.	9,192,695.31	6.64%	967,950.51	0.71%	148,797.61	0.11%	-	0.00%	212,645.55	0.16%	4,409,509.08	3.25%	-	0.00%
VIVIR COMPAÑÍA DE SEGUROS, S.A.	161,648.39	0.12%	-	0.00%	-	0.00%	161,648.39	0.12%	-	0.00%	-	0.00%	-	0.00%
WORLDWIDE MEDICAL ASSURANCE, LTD. CORP.	4,404,247.42	3.18%	-	0.00%	634.22	0.00%	4,391,082.29	3.23%	12,530.91	0.01%	-	0.00%	-	0.00%
<b>SUB-TOTAL</b>	<b>135,882,556.95</b>	<b>98.10%</b>	<b>9,661,129.64</b>	<b>7.11%</b>	<b>1,414,926.82</b>	<b>1.04%</b>	<b>43,471,526.87</b>	<b>31.99%</b>	<b>16,561,848.57</b>	<b>12.19%</b>	<b>7,508,503.97</b>	<b>5.53%</b>	<b>458,722.71</b>	<b>0.34%</b>
SEGUROS BBA CORP.	327,643.04	0.24%	-	0.00%	22,458.54	0.02%	10,967.84	0.01%	503.88	0.00%	7,251.49	0.01%	-	0.00%
BUPA PANAMÁ, S.A	-	0.00%	-	0.00%	-	0.00%	-	0.00%	-	0.00%	-	0.00%	-	0.00%
LA FLORESTA DE SEGUROS Y VIDA, S.A.	617,211.00	0.45%	10,133.90	0.01%	9,749.20	0.01%	6,464.80	0.00%	-	0.00%	28,949.70	0.02%	-	0.00%
LA REGIONAL DE SEGUROS, S.A.	116,796.67	0.08%	-	0.00%	-	0.00%	-	0.00%	-	0.00%	17,500.00	0.01%	350.00	0.00%
MERCANTIL PANAMÁ SEGUROS, S.A	-	0.00%	-	0.00%	-	0.00%	-	0.00%	-	0.00%	-	0.00%	-	0.00%
SEGUROS CONFIANZA, S.A.	150,651.00	0.11%	-	0.00%	10,843.81	0.01%	-	0.00%	-	0.00%	4,166.05	0.00%	-	0.00%
SEGUROS CONSTITUCIÓN, S.A.	1,424,103.03	1.03%	-	0.00%	-	0.00%	-	0.00%	-	0.00%	44,756.89	0.03%	-	0.00%
<b>SUB-TOTAL</b>	<b>2,636,404.74</b>	<b>1.90%</b>	<b>10,133.90</b>	<b>0.01%</b>	<b>43,051.55</b>	<b>0.03%</b>	<b>17,432.64</b>	<b>0.01%</b>	<b>503.88</b>	<b>0.00%</b>	<b>102,624.13</b>	<b>0.07%</b>	<b>350.00</b>	<b>0.00%</b>
<b>TOTAL</b>	<b>\$138,518,961.69</b>	<b>100.00%</b>	<b>\$9,671,263.54</b>	<b>6.98%</b>	<b>\$1,457,978.37</b>	<b>1.05%</b>	<b>\$43,488,959.51</b>	<b>31.40%</b>	<b>\$16,562,352.45</b>	<b>11.96%</b>	<b>\$7,611,128.10</b>	<b>5.49%</b>	<b>\$459,072.71</b>	<b>0.33%</b>

**SUPERINTENDENCIA DE SEGUROS Y REASEGUROS DE PANAMA**  
**Cuadro 02. SINIESTROS BRUTOS INCURRIDOS DE SEGURO DIRECTO CON PARTICIPACIÓN EN EL MERCADO POR RAMOS**  
**Acumulado al Mes de Marzo 2015**

COMPAÑÍAS	SINIESTROS BRUTOS INCURRIDOS															
	Transporte		Casco		Automóvil		Ramos Técnicos		Resp. Civil		Robo		Fianzas		Otros	
	Monto	%	Monto	%	Monto	%	Monto	%	Monto	%	Monto	%	Monto	%	Monto	%
ACE SEGUROS, S.A	(236,911.26)	-0.17%	-	0.00%	-	0.00%	46,643.56	0.03%	355,877.31	0.26%	-	0.00%	-	0.00%	-	0.00%
ACERTA COMPAÑÍA DE SEGUROS, S.A.	3,174.74	0.00%	150,652.70	0.11%	825,479.57	0.61%	75,525.94	0.06%	26,812.09	0.02%	(50,984.75)	-0.04%	(53.98)	0.00%	37,185.87	0.03%
AIG. SEGUROS PANAMÁ, S.A.	37,480.01	0.03%	-	0.00%	255,847.46	0.19%	-	0.00%	(9,121.01)	-0.01%	82,288.90	0.06%	112.86	0.00%	60,643.91	0.04%
ALIADO SEGUROS, S.A	(3,609.44)	0.00%	48.00	0.00%	568,098.96	0.42%	(4,835.44)	0.00%	5,451.69	0.00%	1,094.12	0.00%	-	0.00%	7,465.56	0.01%
ASEGURADORA ANCÓN, S.A.	98,085.32	0.07%	(17,114.36)	-0.01%	2,954,617.47	2.17%	(1,769.29)	0.00%	765,487.75	0.56%	-	0.00%	69,241.47	0.05%	109,438.26	0.08%
ASEGURADORA GLOBAL, S.A	-	0.00%	-	0.00%	671,786.51	0.49%	-	0.00%	-	0.00%	-	0.00%	-	0.00%	94,401.02	0.07%
ASSA COMPAÑÍA DE SEGUROS, S.A	484,390.90	0.36%	165,365.14	0.12%	3,035,876.05	2.23%	935,095.67	0.69%	350,521.64	0.26%	192,270.89	0.14%	118,503.06	0.09%	520,314.02	0.38%
ASSICURAZIONI GENERALI, S.p.A.	167,093.29	0.12%	203,480.25	0.15%	3,928,384.56	2.89%	270,281.81	0.20%	46,021.22	0.03%	187,215.49	0.14%	42,620.80	0.03%	101,258.91	0.07%
BANESCO SEGUROS, S.A.	28,283.68	0.02%	68.00	0.00%	785,887.57	0.58%	33,099.66	0.02%	173,634.65	0.13%	36,767.86	0.03%	33,445.49	0.02%	106,077.32	0.08%
COMPAÑÍA INTERNACIONAL DE SEGUROS, S.A.	215,701.04	0.16%	286,894.71	0.21%	7,064,684.38	5.20%	755,038.42	0.56%	120,297.11	0.09%	136,562.79	0.10%	2,690,188.44	1.98%	2,093,996.07	1.54%
DEL ISTMO ASSURANCE CORP.	-	0.00%	-	0.00%	-	0.00%	-	0.00%	-	0.00%	-	0.00%	579,924.47	0.43%	-	0.00%
GENERAL DE SEGUROS, S.A.	19,217.82	0.01%	-	0.00%	574,914.02	0.42%	(1,624.57)	0.00%	16,701.53	0.01%	30,793.57	0.02%	-	0.00%	296,101.45	0.22%
MAPFRE PANAMÁ, S.A	334,151.58	0.25%	106,399.25	0.08%	5,244,326.43	3.86%	-	0.00%	45,966.04	0.03%	180,279.16	0.13%	5,286,070.89	3.89%	616,359.55	0.45%
MULTIBANK SEGUROS PANAMÁ	-	0.00%	-	0.00%	35,100.07	0.03%	-	0.00%	4,117.40	0.00%	8,537.86	0.01%	-	0.00%	96,994.98	0.07%
NACIONAL DE SEGUROS DE PANAMÁ Y CENTROAMÉRICA, S.A.	45,206.86	0.03%	8,721.97	0.01%	523,803.46	0.39%	(1,500.00)	0.00%	15,610.76	0.01%	7,243.67	0.01%	8,000.00	0.01%	-	0.00%
ÓPTIMA COMPAÑÍA DE SEGUROS, S.A.	28,536.78	0.02%	99,383.82	0.07%	522,340.07	0.38%	9,965.74	0.01%	43,692.44	0.03%	82,921.77	0.06%	2,736.10	0.00%	966,371.08	0.71%
PAN AMERICAN LIFE INSURANCE DE PANAMÁ, S.A	-	0.00%	-	0.00%	-	0.00%	-	0.00%	-	0.00%	-	0.00%	-	0.00%	-	0.00%
SAGICOR PANAMÁ	-	0.00%	-	0.00%	-	0.00%	-	0.00%	-	0.00%	-	0.00%	-	0.00%	-	0.00%
SEGUROS BANISTMO, S.A.	391,675.95	0.29%	19,651.40	0.01%	2,861,174.46	2.11%	4,213.53	0.00%	5,090.12	0.00%	53,194.03	0.04%	(502,522.08)	-0.37%	71,444.91	0.05%
SEGUROS FEDPA, S.A.	(340.75)	0.00%	-	0.00%	2,318,410.40	1.71%	342.00	0.00%	67.53	0.00%	4,475.88	0.00%	-	0.00%	-	0.00%
SEGUROS SURAMERICANA, S.A.	86,205.85	0.06%	-	0.00%	2,883,819.25	2.12%	135,860.45	0.10%	(27,247.33)	-0.02%	3,562.34	0.00%	80,517.42	0.06%	291,074.58	0.21%
VIVIR COMPAÑÍA DE SEGUROS, S.A.	-	0.00%	-	0.00%	-	0.00%	-	0.00%	-	0.00%	-	0.00%	-	0.00%	-	0.00%
WORLDWIDE MEDICAL ASSURANCE, LTD. CORP.	-	0.00%	-	0.00%	-	0.00%	-	0.00%	-	0.00%	-	0.00%	-	0.00%	-	0.00%
<b>SUB-TOTAL</b>	<b>1,698,342.37</b>	<b>1.25%</b>	<b>1,023,550.88</b>	<b>0.75%</b>	<b>35,054,550.70</b>	<b>25.80%</b>	<b>2,256,337.48</b>	<b>1.66%</b>	<b>1,938,980.94</b>	<b>1.43%</b>	<b>956,223.58</b>	<b>0.70%</b>	<b>8,408,784.94</b>	<b>6.19%</b>	<b>5,469,127.49</b>	<b>4.02%</b>
SEGUROS BBA CORP.	-	0.00%	-	0.00%	223,171.72	0.16%	632.18	0.00%	2,754.66	0.00%	3,270.98	0.00%	56,631.75	0.04%	-	0.00%
BUPA PANAMÁ, S.A	-	0.00%	-	0.00%	-	0.00%	-	0.00%	-	0.00%	-	0.00%	-	0.00%	-	0.00%
LA FLORESTA DE SEGUROS Y VIDA, S.A.	(818.70)	0.00%	-	0.00%	493,147.60	0.36%	15,210.10	0.01%	2,153.10	0.00%	-	0.00%	-	0.00%	52,221.30	0.04%
LA REGIONAL DE SEGUROS, S.A.	-	0.00%	-	0.00%	96,946.67	0.07%	-	0.00%	-	0.00%	-	0.00%	-	0.00%	2,000.00	0.00%
MERCANTIL PANAMÁ SEGUROS, S.A	-	0.00%	-	0.00%	-	0.00%	-	0.00%	-	0.00%	-	0.00%	-	0.00%	-	0.00%
SEGUROS CONFIANZA, S.A.	-	0.00%	-	0.00%	111,889.63	0.08%	-	0.00%	2,053.51	0.00%	-	0.00%	21,698.00	0.02%	-	0.00%
SEGUROS CONSTITUCIÓN, S.A.	32,655.25	0.02%	1,547.16	0.00%	680,989.55	0.50%	-	0.00%	3,052.52	0.00%	-	0.00%	661,101.66	0.49%	-	0.00%
<b>SUB-TOTAL</b>	<b>31,836.55</b>	<b>0.02%</b>	<b>1,547.16</b>	<b>0.00%</b>	<b>1,606,145.17</b>	<b>1.16%</b>	<b>15,842.28</b>	<b>0.01%</b>	<b>10,013.79</b>	<b>0.01%</b>	<b>3,270.98</b>	<b>0.00%</b>	<b>739,431.41</b>	<b>0.53%</b>	<b>54,221.30</b>	<b>0.04%</b>
<b>TOTAL</b>	<b>\$1,730,178.92</b>	<b>1.25%</b>	<b>\$1,025,098.04</b>	<b>0.74%</b>	<b>\$36,660,695.87</b>	<b>26.47%</b>	<b>\$2,272,179.76</b>	<b>1.64%</b>	<b>\$1,948,994.73</b>	<b>1.41%</b>	<b>\$959,494.56</b>	<b>0.69%</b>	<b>\$9,148,216.35</b>	<b>6.60%</b>	<b>\$5,523,348.79</b>	<b>3.99%</b>



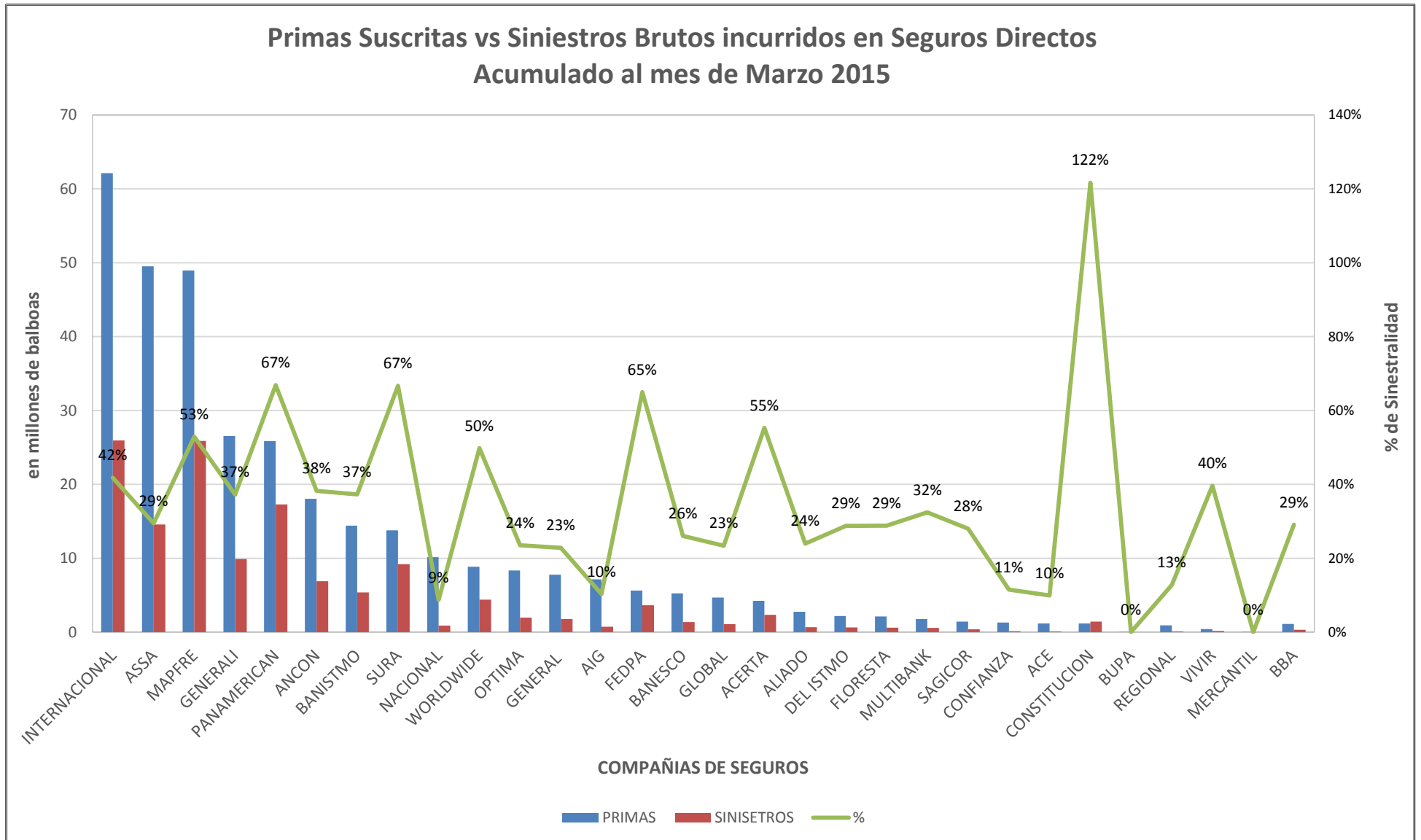
**SUPERINTENDENCIA DE SEGUROS Y REASEGUROS DE PANAMA**  
**Cuadro 03. POLIZAS VIGENTES DE SEGURO DIRECTO CON PARTICIPACIÓN EN EL MERCADO POR RAMOS**  
**Acumulado al Mes de Marzo 2015**

COMPAÑIAS	POLIZAS VIGENTES													
	Total		Vida Individual		Accidentes Personales		Salud		Colectivo de Vida		Incendio		Multiriesgos	
	Cantidad	%	Cantidad	%	Cantidad	%	Cantidad	%	Cantidad	%	Cantidad	%	Cantidad	%
ACE SEGUROS, S.A	54	0.00%	-	0.00%	15	0.00%	-	0.00%	3	0.00%	5	0.00%	1	0.00%
ACERTA COMPAÑIA DE SEGUROS, S.A.	1,852	0.16%	122	0.01%	52	0.00%	33	0.00%	-	0.00%	139	0.01%	68	0.01%
AIG. SEGUROS PANAMÁ, S.A.	12,676	1.12%	-	0.00%	1,270	0.12%	-	0.00%	-	0.00%	2,066	0.19%	235	0.02%
ALIADO SEGUROS, S.A	7,161	0.63%	-	0.00%	70	0.01%	-	0.00%	84	0.01%	291	0.03%	95	0.01%
ASEGURADORA ANCÓN, S.A.	47,932	4.25%	1,459	0.14%	583	0.05%	5,396	0.50%	1,746	0.16%	4,926	0.46%	1,177	0.11%
ASEGURADORA GLOBAL, S.A	16,505	1.46%	263	0.02%	308	0.03%	-	0.00%	4	0.00%	7,038	0.66%	-	0.00%
ASSA COMPAÑIA DE SEGUROS, S.A	106,950	9.48%	27,618	2.58%	6,673	0.62%	9,987	0.93%	2,239	0.21%	10,061	0.94%	3,327	0.31%
ASSICURAZIONI GENERALI, S.p.A.	147,260	13.05%	37,356	3.49%	3,357	0.31%	175	0.02%	238	0.02%	29,698	2.77%	11,352	1.06%
BANESCO SEGUROS, S.A.	1,304	0.12%	243	0.02%	44	0.00%	-	0.00%	6	0.00%	133	0.01%	90	0.01%
COMPAÑIA INTERNACIONAL DE SEGUROS, S.A.	207,442	18.38%	27,554	2.57%	6,709	0.63%	16,115	1.50%	418	0.04%	37,112	3.46%	2,013	0.19%
DEL ISTMO ASSURANCE CORP.	4,468	0.40%	111	0.01%	121	0.01%	169	0.02%	470	0.04%	31	0.00%	-	0.00%
GENERAL DE SEGUROS, S.A.	33,253	2.95%	-	0.00%	2	0.00%	-	0.00%	85	0.01%	32,424	3.03%	44	0.00%
MAPFRE PANAMÁ, S.A	129,839	11.50%	24,174	2.26%	1,001	0.09%	12,922	1.21%	181	0.02%	24,261	2.26%	-	0.00%
MULTIBANK SEGUROS PANAMÁ	8,552	0.76%	202	0.02%	2,920	0.27%	-	0.00%	6	0.00%	3,376	0.32%	99	0.01%
NACIONAL DE SEGUROS DE PANAMÁ Y CENTROAMÉRICA, S.A.	4,101	0.36%	45	0.00%	29	0.00%	-	0.00%	2	0.00%	52	0.00%	-	0.00%
ÓPTIMA COMPAÑIA DE SEGUROS, S.A.	11,022	0.98%	-	0.00%	369	0.03%	-	0.00%	292	0.03%	3,456	0.32%	341	0.03%
PAN AMERICAN LIFE INSURANCE DE PANAMÁ, S.A	29,746	2.64%	19,654	1.83%	8,902	0.83%	-	0.00%	1,190	0.11%	-	0.00%	-	0.00%
SAGICOR PANAMÁ	123	0.01%	35	0.00%	10	0.00%	30	0.00%	48	0.00%	-	0.00%	-	0.00%
SEGUROS BANISTMO, S.A.	101,173	8.96%	19,777	1.85%	5,846	0.55%	137	0.01%	11,142	1.04%	28,648	2.67%	-	0.00%
SEGUROS FEDPA, S.A.	94,522	8.37%	227	0.02%	16,722	1.56%	1	0.00%	518	0.05%	1,937	0.18%	268	0.03%
SEGUROS SURAMERICANA, S.A.	98,250	8.70%	27,602	2.58%	4,379	0.41%	-	0.00%	244	0.02%	10,040	0.94%	-	0.00%
VIVIR COMPAÑIA DE SEGUROS, S.A.	1,102	0.10%	-	0.00%	-	0.00%	1,080	0.10%	22	0.00%	-	0.00%	-	0.00%
WORLDWIDE MEDICAL ASSURANCE, LTD. CORP.	5,939	0.53%	135	0.01%	-	0.00%	5,804	0.54%	-	0.00%	-	0.00%	-	0.00%
<b>SUB-TOTAL</b>	<b>1,071,226</b>	<b>94.90%</b>	<b>186,577</b>	<b>17.42%</b>	<b>59,382</b>	<b>5.54%</b>	<b>51,849</b>	<b>4.84%</b>	<b>18,938</b>	<b>1.77%</b>	<b>195,694</b>	<b>18.27%</b>	<b>19,110</b>	<b>1.78%</b>
SEGUROS BBA CORP.	3,155	0.28%	13	0.00%	65	0.01%	79	0.01%	98	0.01%	25	0.00%	12	0.00%
BUPA PANAMÁ, S.A	-	0.00%	-	0.00%	-	0.00%	-	0.00%	-	0.00%	-	0.00%	-	0.00%
LA FLORESTA DE SEGUROS Y VIDA, S.A.	9,084	0.80%	169	0.02%	44	0.00%	508	0.05%	-	0.00%	687	0.06%	-	0.00%
LA REGIONAL DE SEGUROS, S.A.	606	0.05%	12	0.00%	1	0.00%	-	0.00%	1	0.00%	41	0.00%	32	0.00%
MERCANTIL PANAMÁ SEGUROS, S.A	30	0.00%	12	0.00%	1	0.00%	5	0.00%	-	0.00%	-	0.00%	4	0.00%
SEGUROS CONFIANZA, S.A.	28,145	2.49%	518	0.05%	104	0.01%	-	0.00%	63	0.01%	437	0.04%	210	0.02%
SEGUROS CONSTITUCIÓN, S.A.	16,498	1.46%	355	0.03%	235	0.02%	-	0.00%	396	0.04%	687	0.06%	-	0.00%
<b>SUB-TOTAL</b>	<b>57,518</b>	<b>5.10%</b>	<b>1,079</b>	<b>0.10%</b>	<b>450</b>	<b>0.04%</b>	<b>592</b>	<b>0.05%</b>	<b>558</b>	<b>0.05%</b>	<b>1,877</b>	<b>0.17%</b>	<b>258</b>	<b>0.02%</b>
<b>TOTAL</b>	<b>1,128,744</b>	<b>100.00%</b>	<b>187,656</b>	<b>16.63%</b>	<b>59,832</b>	<b>5.30%</b>	<b>52,441</b>	<b>4.65%</b>	<b>19,496</b>	<b>1.73%</b>	<b>197,571</b>	<b>17.50%</b>	<b>19,368</b>	<b>1.72%</b>

**SUPERINTENDENCIA DE SEGUROS Y REASEGUROS DE PANAMA**  
**Cuadro 03. POLIZAS VIGENTES DE SEGURO DIRECTO CON PARTICIPACIÓN EN EL MERCADO POR RAMOS**  
**Acumulado al Mes de Marzo 2015**

COMPAÑÍAS	POLIZAS VIGENTES															
	Transporte		Casco		Automóvil		Ramos Técnicos		Resp. Civil		Robo		Fianzas		Otros	
	Cantidad	%	Cantidad	%	Cantidad	%	Cantidad	%	Cantidad	%	Cantidad	%	Cantidad	%	Cantidad	%
ACE SEGUROS, S.A	3	0.00%	-	0.00%	-	0.00%	1	0.00%	20	0.00%	-	0.00%	6	0.00%	-	0.00%
ACERTA COMPAÑÍA DE SEGUROS, S.A.	15	0.00%	5	0.00%	1,218	0.11%	43	0.00%	57	0.01%	19	0.00%	67	0.01%	14	0.00%
AIG. SEGUROS PANAMÁ, S.A.	48	0.00%	-	0.00%	8,296	0.77%	-	0.00%	424	0.04%	6	0.00%	302	0.03%	29	0.00%
ALIADO SEGUROS, S.A	54	0.01%	20	0.00%	5,865	0.55%	128	0.01%	85	0.01%	4	0.00%	393	0.04%	72	0.01%
ASEGURADORA ANCÓN, S.A.	412	0.04%	78	0.01%	29,108	2.72%	460	0.04%	628	0.06%	118	0.01%	1,704	0.16%	137	0.01%
ASEGURADORA GLOBAL, S.A	-	0.00%	-	0.00%	8,475	0.79%	-	0.00%	-	0.00%	-	0.00%	378	0.04%	39	0.00%
ASSA COMPAÑÍA DE SEGUROS, S.A	788	0.07%	191	0.02%	29,282	2.73%	1,895	0.18%	2,571	0.24%	1,988	0.19%	9,059	0.85%	1,271	0.12%
ASSICURAZIONI GENERALI, S.p.A.	7,068	0.66%	342	0.03%	52,491	4.90%	1,772	0.17%	1,980	0.18%	537	0.05%	666	0.06%	228	0.02%
BANESCO SEGUROS, S.A.	25	0.00%	1	0.00%	484	0.05%	49	0.00%	79	0.01%	7	0.00%	136	0.01%	7	0.00%
COMPAÑÍA INTERNACIONAL DE SEGUROS, S.A.	16,304	1.52%	125	0.01%	88,914	8.30%	1,390	0.13%	1,840	0.17%	383	0.04%	8,337	0.78%	228	0.02%
DEL ISTMO ASSURANCE CORP.	-	0.00%	-	0.00%	-	0.00%	63	0.01%	92	0.01%	1	0.00%	3,410	0.32%	-	0.00%
GENERAL DE SEGUROS, S.A.	14	0.00%	-	0.00%	573	0.05%	26	0.00%	22	0.00%	4	0.00%	43	0.00%	16	0.00%
MAPFRE PANAMÁ, S.A	217	0.02%	178	0.02%	58,756	5.48%	-	0.00%	1,214	0.11%	408	0.04%	2,927	0.27%	3,600	0.34%
MULTIBANK SEGUROS PANAMÁ	3	0.00%	1	0.00%	1,632	0.15%	92	0.01%	62	0.01%	18	0.00%	138	0.01%	3	0.00%
NACIONAL DE SEGUROS DE PANAMÁ Y CENTROAMÉRICA, S.A.	6	0.00%	-	0.00%	3,378	0.32%	15	0.00%	19	0.00%	8	0.00%	547	0.05%	-	0.00%
ÓPTIMA COMPAÑÍA DE SEGUROS, S.A.	165	0.02%	62	0.01%	4,425	0.41%	350	0.03%	527	0.05%	141	0.01%	823	0.08%	71	0.01%
PAN AMERICAN LIFE INSURANCE DE PANAMÁ, S.A	-	0.00%	-	0.00%	-	0.00%	-	0.00%	-	0.00%	-	0.00%	-	0.00%	-	0.00%
SAGICOR PANAMÁ	-	0.00%	-	0.00%	-	0.00%	-	0.00%	-	0.00%	-	0.00%	-	0.00%	-	0.00%
SEGUROS BANISTMO, S.A.	415	0.04%	53	0.00%	32,946	3.08%	661	0.06%	600	0.06%	394	0.04%	382	0.04%	172	0.02%
SEGUROS FEDPA, S.A.	281	0.03%	9	0.00%	73,973	6.91%	72	0.01%	180	0.02%	80	0.01%	252	0.02%	2	0.00%
SEGUROS SURAMERICANA, S.A.	448	0.04%	-	0.00%	46,615	4.35%	1,022	0.10%	5,425	0.51%	218	0.02%	2,225	0.21%	32	0.00%
VIVIR COMPAÑÍA DE SEGUROS, S.A.	-	0.00%	-	0.00%	-	0.00%	-	0.00%	-	0.00%	-	0.00%	-	0.00%	-	0.00%
WORLDWIDE MEDICAL ASSURANCE, LTD. CORP.	-	0.00%	-	0.00%	-	0.00%	-	0.00%	-	0.00%	-	0.00%	-	0.00%	-	0.00%
<b>SUB-TOTAL</b>	<b>26,266</b>	<b>2.45%</b>	<b>1,065</b>	<b>0.10%</b>	<b>446,431</b>	<b>41.67%</b>	<b>8,039</b>	<b>0.75%</b>	<b>15,825</b>	<b>1.48%</b>	<b>4,334</b>	<b>0.40%</b>	<b>31,795</b>	<b>2.97%</b>	<b>5,921</b>	<b>0.55%</b>
SEGUROS BBA CORP.	3	0.00%	-	0.00%	2,760	0.26%	13	0.00%	20	0.00%	8	0.00%	59	0.01%	-	0.00%
BUPA PANAMÁ, S.A	-	0.00%	-	0.00%	-	0.00%	-	0.00%	-	0.00%	-	0.00%	-	0.00%	-	0.00%
LA FLORESTA DE SEGUROS Y VIDA, S.A.	155	0.01%	-	0.00%	5,816	0.54%	21	0.00%	472	0.04%	-	0.00%	1,064	0.10%	148	0.01%
LA REGIONAL DE SEGUROS, S.A.	-	0.00%	-	0.00%	482	0.04%	2	0.00%	-	0.00%	-	0.00%	23	0.00%	12	0.00%
MERCANTIL PANAMÁ SEGUROS, S.A	-	0.00%	-	0.00%	8	0.00%	-	0.00%	-	0.00%	-	0.00%	-	0.00%	-	0.00%
SEGUROS CONFIANZA, S.A.	25	0.00%	1	0.00%	25,587	2.39%	76	0.01%	146	0.01%	17	0.00%	961	0.09%	-	0.00%
SEGUROS CONSTITUCIÓN, S.A.	69	0.01%	42	0.00%	13,905	1.30%	91	0.01%	231	0.02%	44	0.00%	392	0.04%	51	0.00%
<b>SUB-TOTAL</b>	<b>252</b>	<b>0.02%</b>	<b>43</b>	<b>0.00%</b>	<b>48,558</b>	<b>4.30%</b>	<b>203</b>	<b>0.02%</b>	<b>869</b>	<b>0.08%</b>	<b>69</b>	<b>0.01%</b>	<b>2,499</b>	<b>0.22%</b>	<b>211</b>	<b>0.02%</b>
<b>TOTAL</b>	<b>26,518</b>	<b>2.35%</b>	<b>1,108</b>	<b>0.10%</b>	<b>494,989</b>	<b>43.85%</b>	<b>8,242</b>	<b>0.73%</b>	<b>16,694</b>	<b>1.48%</b>	<b>4,403</b>	<b>0.39%</b>	<b>34,294</b>	<b>3.04%</b>	<b>6,132</b>	<b>0.54%</b>

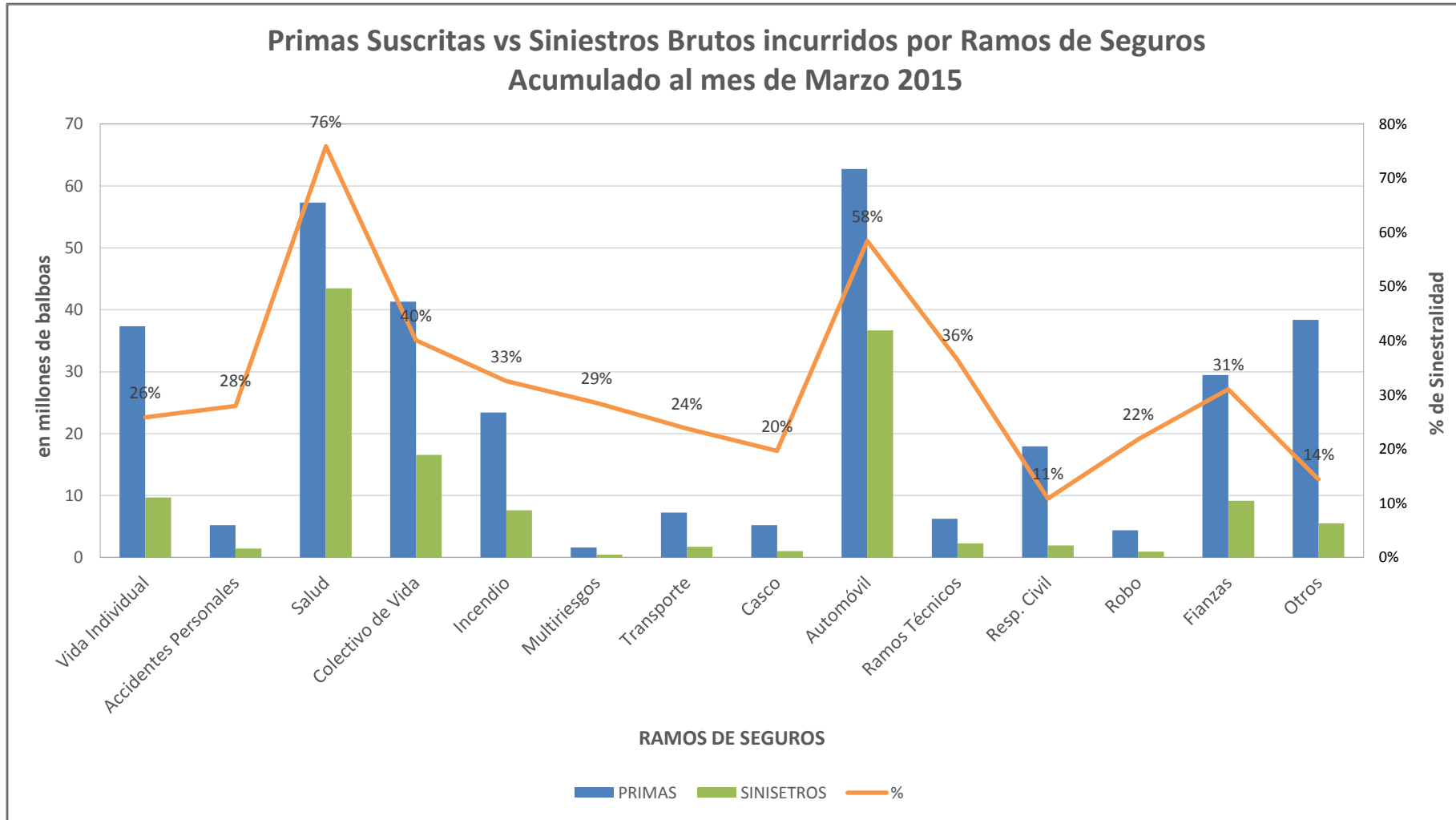






Superintendencia de Seguros  
y Reaseguros de Panamá  
1956

## SUPERINTENDENCIA DE SEGUROS Y REASEGUROS DE PANAMA







Superintendencia de Seguros  
y Reaseguros de Panamá  
1956

## SUPERINTENDENCIA DE SEGUROS Y REASEGUROS DE PANAMA

### Pólizas Vigentes por Ramos de Seguros Al mes de Marzo 2015

