



**SUPERINTENDENCIA DE SEGUROS Y REASEGUROS DE PANAMA**  
**Cuadro 01. PRIMAS SUSCRITAS DE SEGURO DIRECTO CON PARTICIPACIÓN EN EL MERCADO POR RAMOS**  
**Acumulado al Mes de Mayo 2015**

COMPAÑIAS	PRIMAS SUSCRITAS													
	Total		Vida Individual		Accidentes Personales		Salud		Colectivo de Vida		Incendio		Multirisgos	
	Monto	%	Monto	%	Monto	%	Monto	%	Monto	%	Monto	%	Monto	%
ACE SEGUROS, S.A	2,104,257.02	0.38%	-	0.00%	347,811.92	0.06%	-	0.00%	7,708.83	0.00%	641,545.57	0.12%	31,346.21	0.01%
ACERTA COMPAÑIA DE SEGUROS, S.A.	7,250,572.14	1.30%	278,008.69	0.05%	146,210.24	0.03%	824,192.06	0.15%	108,441.01	0.02%	503,963.36	0.09%	76,927.64	0.01%
AIG. SEGUROS PANAMÁ, S.A.	8,556,393.42	1.54%	-	0.00%	480,882.12	0.09%	-	0.00%	-	0.00%	1,769,175.23	0.33%	(44,601.02)	-0.01%
ALIADO SEGUROS, S.A	7,469,427.64	1.34%	-	0.00%	42,715.12	0.01%	-	0.00%	409,889.09	0.08%	522,066.52	0.10%	57,321.46	0.01%
ASEGURADORA ANCÓN, S.A.	28,659,417.47	5.16%	200,799.43	0.04%	179,173.91	0.03%	4,661,085.37	0.86%	1,885,457.53	0.35%	2,054,036.99	0.38%	149,726.01	0.03%
ASEGURADORA GLOBAL, S.A	7,380,474.92	1.33%	35,344.76	0.01%	3,324.32	0.00%	-	0.00%	3,421,158.48	0.63%	329,140.93	0.06%	-	0.00%
ASSA COMPAÑIA DE SEGUROS, S.A	85,547,824.99	15.39%	9,357,971.59	1.72%	802,155.14	0.15%	14,677,095.07	2.70%	11,105,824.94	2.04%	12,145,273.62	2.23%	257,136.05	0.05%
ASSICURAZIONI GENERALI, S.p.A.	41,680,116.35	7.50%	9,920,391.59	1.83%	776,479.68	0.14%	4,529,008.51	0.83%	2,321,640.19	0.43%	5,796,075.12	1.07%	1,254,423.14	0.23%
BANESCO SEGUROS, S.A.	9,291,397.34	1.67%	372,815.45	0.07%	1,135.65	0.00%	241,035.41	0.04%	1,575,188.61	0.29%	596,666.51	0.11%	562,628.34	0.10%
COMPAÑIA INTERNACIONAL DE SEGUROS, S.A.	97,192,343.89	17.48%	8,772,694.08	1.61%	1,506,980.92	0.28%	19,405,931.30	3.57%	11,504,437.92	2.12%	4,457,777.19	0.82%	136,661.47	0.03%
DEL ISTMO ASSURANCE CORP.	3,519,518.04	0.63%	49,089.95	0.01%	34,175.68	0.01%	238,574.80	0.04%	(1,722.38)	0.00%	30,729.11	0.01%	-	0.00%
GENERAL DE SEGUROS, S.A.	13,726,105.11	2.47%	-	0.00%	3,169.13	0.00%	-	0.00%	6,636,400.71	1.22%	1,511,687.79	0.28%	33,245.59	0.01%
MAPFRE PANAMÁ, S.A	87,296,858.52	15.70%	9,191,447.01	1.69%	1,322,577.89	0.24%	15,063,787.60	2.77%	10,720,203.49	1.97%	3,238,536.44	0.60%	-	0.00%
MULTIBANK SEGUROS PANAMÁ	2,996,098.22	0.54%	30,350.11	0.01%	61,275.78	0.01%	-	0.00%	1,727,241.99	0.32%	253,027.07	0.05%	8,044.07	0.00%
NACIONAL DE SEGUROS DE PANAMÁ Y CENTROAMÉRICA, S.A.	14,439,412.24	2.60%	(105,187.18)	-0.02%	116,744.56	0.02%	-	0.00%	42,603.21	0.01%	2,191,130.19	0.40%	-	0.00%
ÓPTIMA COMPAÑIA DE SEGUROS, S.A.	10,866,060.72	1.95%	-	0.00%	265,242.75	0.05%	-	0.00%	788,890.49	0.15%	707,441.10	0.13%	45,055.38	0.01%
PAN AMERICAN LIFE INSURANCE DE PANAMÁ, S.A	42,738,512.77	7.69%	13,294,670.41	2.45%	941,848.31	0.17%	22,433,505.55	4.13%	6,068,488.50	1.12%	-	0.00%	-	0.00%
SAGICOR PANAMÁ	1,917,941.46	0.35%	207,223.13	0.04%	21,222.41	0.00%	1,490,280.96	0.27%	199,214.96	0.04%	-	0.00%	-	0.00%
SEGUROS BANISTMO, S.A.	23,439,228.14	4.22%	2,253,835.68	0.41%	467,870.70	0.09%	499,951.14	0.09%	6,954,008.67	1.28%	3,006,572.05	0.55%	-	0.00%
SEGUROS FEDPA, S.A.	10,256,359.51	1.85%	20,532.58	0.00%	668,766.52	0.12%	15,870.30	0.00%	1,695,565.29	0.31%	130,642.13	0.02%	16,244.86	0.00%
SEGUROS SURAMERICANA, S.A.	22,788,937.33	4.10%	5,657,419.00	1.04%	594,405.28	0.11%	-	0.00%	634,523.97	0.12%	1,914,909.49	0.35%	-	0.00%
VIVIR COMPAÑIA DE SEGUROS, S.A.	759,014.15	0.14%	-	0.00%	-	0.00%	592,279.71	0.11%	166,734.44	0.03%	-	0.00%	-	0.00%
WORLDWIDE MEDICAL ASSURANCE, LTD. CORP.	13,625,844.01	2.45%	3,393,457.12	0.62%	1,705.78	0.00%	10,110,562.07	1.86%	120,119.04	0.02%	-	0.00%	-	0.00%
<b>SUB-TOTAL</b>	<b>543,502,115.40</b>	<b>97.77%</b>	<b>62,930,863.40</b>	<b>11.58%</b>	<b>8,785,873.81</b>	<b>1.62%</b>	<b>94,783,159.85</b>	<b>17.44%</b>	<b>68,092,018.98</b>	<b>12.53%</b>	<b>41,800,396.41</b>	<b>7.69%</b>	<b>2,584,159.20</b>	<b>0.48%</b>
SEGUROS BBA CORP.	2,052,637.63	0.37%	9,329.26	0.00%	76,415.70	0.01%	11,897.77	0.00%	52,465.42	0.01%	52,557.51	0.01%	8,061.45	0.00%
BUPA PANAMÁ, S.A	49,619.00	0.01%	-	0.00%	-	0.00%	49,619.00	0.01%	-	0.00%	-	0.00%	-	0.00%
LA FLORESTA DE SEGUROS Y VIDA, S.A.	4,268,927.80	0.77%	40,888.40	0.01%	7,768.90	0.00%	310,456.30	0.06%	48,484.60	0.01%	479,809.90	0.09%	-	0.00%
LA REGIONAL DE SEGUROS, S.A.	1,647,384.58	0.30%	34,874.70	0.01%	(423.73)	0.00%	-	0.00%	26,491.32	0.00%	224,120.13	0.04%	48,352.15	0.01%
MERCANTIL PANAMÁ SEGUROS, S.A	71,510.01	0.01%	28,956.68	0.01%	6,208.51	0.00%	1,143.00	0.00%	-	0.00%	-	0.00%	5,485.06	0.00%
SEGUROS CONFIANZA, S.A.	2,222,766.17	0.40%	96,565.15	0.02%	15,785.59	0.00%	-	0.00%	18,117.04	0.00%	212,849.55	0.04%	36,937.81	0.01%
SEGUROS CONSTITUCIÓN, S.A.	2,061,727.08	0.37%	94,700.45	0.02%	5,669.89	0.00%	4,094.00	0.00%	27,222.46	0.01%	187,680.01	0.03%	-	0.00%
<b>SUB-TOTAL</b>	<b>12,374,572.27</b>	<b>2.23%</b>	<b>305,314.64</b>	<b>0.05%</b>	<b>111,424.86</b>	<b>0.02%</b>	<b>377,210.07</b>	<b>0.07%</b>	<b>172,780.84</b>	<b>0.03%</b>	<b>1,157,017.10</b>	<b>0.21%</b>	<b>98,836.47</b>	<b>0.02%</b>
<b>TOTAL</b>	<b>\$555,876,687.67</b>	<b>100.00%</b>	<b>\$63,236,178.04</b>	<b>11.38%</b>	<b>\$8,897,298.67</b>	<b>1.60%</b>	<b>\$95,160,369.92</b>	<b>17.12%</b>	<b>\$68,264,799.82</b>	<b>12.28%</b>	<b>\$42,957,413.51</b>	<b>7.73%</b>	<b>\$2,682,995.67</b>	<b>0.48%</b>

**SUPERINTENDENCIA DE SEGUROS Y REASEGUROS DE PANAMA**  
**Cuadro 01. PRIMAS SUSCRITAS DE SEGURO DIRECTO CON PARTICIPACIÓN EN EL MERCADO POR RAMOS**  
**Acumulado al Mes de Mayo 2015**

COMPAÑIAS	PRIMAS SUSCRITAS															
	Transporte		Casco		Automóvil		Ramos Técnicos		Resp. Civil		Robo		Fianzas		Otros	
	Monto	%	Monto	%	Monto	%	Monto	%	Monto	%	Monto	%	Monto	%	Monto	%
ACE SEGUROS, S.A	167,920.00	0.03%	-	0.00%	-	0.00%	50,616.71	0.01%	752,891.45	0.14%	-	0.00%	104,416.33	0.02%	-	0.00%
ACERTA COMPAÑIA DE SEGUROS, S.A.	190,321.85	0.04%	281,435.11	0.05%	2,905,889.80	0.53%	489,846.11	0.09%	358,797.94	0.07%	110,350.53	0.02%	953,375.55	0.18%	22,812.25	0.00%
AIG. SEGUROS PANAMÁ, S.A.	311,053.59	0.06%	223,097.85	0.04%	1,482,997.14	0.27%	-	0.00%	584,764.42	0.11%	420,535.36	0.08%	1,312,326.94	0.24%	2,016,161.79	0.37%
ALIADO SEGUROS, S.A	228,116.30	0.04%	25,801.81	0.00%	2,085,537.47	0.38%	492,953.96	0.09%	512,921.55	0.09%	7,324.70	0.00%	444,027.79	0.08%	2,640,751.87	0.49%
ASEGURADORA ANCON, S.A.	271,462.65	0.05%	330,176.78	0.06%	7,760,087.94	1.43%	294,991.38	0.05%	827,620.58	0.15%	35,796.52	0.01%	9,750,453.00	1.79%	258,549.38	0.05%
ASEGURADORA GLOBAL, S.A	-	0.00%	-	0.00%	2,063,080.45	0.38%	-	0.00%	-	0.00%	-	0.00%	233,116.28	0.04%	1,295,309.70	0.24%
ASSA COMPAÑIA DE SEGUROS, S.A	1,591,046.13	0.29%	2,538,140.00	0.47%	9,618,277.43	1.77%	983,605.30	0.18%	4,815,069.71	0.89%	969,505.15	0.18%	3,016,283.49	0.55%	13,670,441.37	2.52%
ASSICURAZIONI GENERALI, S.p.A.	892,549.68	0.16%	423,288.35	0.08%	11,340,927.88	2.09%	3,045,723.76	0.56%	834,115.95	0.15%	311,716.20	0.06%	133,340.14	0.02%	100,436.16	0.02%
BANESCO SEGUROS, S.A.	384,939.32	0.07%	453,429.18	0.08%	1,867,888.13	0.34%	634,238.65	0.12%	421,311.85	0.08%	82,439.83	0.02%	903,235.34	0.17%	1,194,445.07	0.22%
COMPAÑIA INTERNACIONAL DE SEGUROS, S.A.	3,479,356.22	0.64%	2,901,035.21	0.53%	13,032,649.90	2.40%	1,385,701.65	0.25%	5,243,279.25	0.96%	464,378.89	0.09%	4,013,473.77	0.74%	20,887,986.12	3.84%
DEL ISTMO ASSURANCE CORP.	150.00	0.00%	933.34	0.00%	-	0.00%	102,908.31	0.02%	423,803.51	0.08%	5,851.59	0.00%	2,635,024.13	0.48%	-	0.00%
GENERAL DE SEGUROS, S.A.	120,468.62	0.02%	22,740.29	0.00%	1,536,963.48	0.28%	623,565.47	0.11%	202,270.60	0.04%	540,571.35	0.10%	322,795.82	0.06%	2,172,226.26	0.40%
MAPFRE PANAMÁ, S.A	1,887,650.72	0.35%	5,092,352.58	0.94%	17,590,783.50	3.24%	-	0.00%	1,554,544.94	0.29%	2,941,333.27	0.54%	11,011,591.70	2.03%	7,682,049.38	1.41%
MULTIBANK SEGUROS PANAMÁ	4,676.38	0.00%	6,419.18	0.00%	434,316.18	0.08%	54,273.85	0.01%	13,934.87	0.00%	11,548.34	0.00%	74,580.95	0.01%	316,409.45	0.06%
NACIONAL DE SEGUROS DE PANAMÁ Y CENTROAMÉRICA, S.A.	30,152.90	0.01%	109,653.93	0.02%	1,408,303.80	0.26%	131,836.91	0.02%	3,049,154.14	0.56%	84,117.85	0.02%	7,379,037.62	1.36%	1,864.31	0.00%
ÓPTIMA COMPAÑIA DE SEGUROS, S.A.	238,260.20	0.04%	117,808.17	0.02%	1,203,038.90	0.22%	424,650.69	0.08%	4,588,246.16	0.84%	511,975.68	0.09%	641,939.78	0.12%	1,333,511.42	0.25%
PAN AMERICAN LIFE INSURANCE DE PANAMÁ, S.A	-	0.00%	-	0.00%	-	0.00%	-	0.00%	-	0.00%	-	0.00%	-	0.00%	-	0.00%
SAGICOR PANAMÁ	-	0.00%	-	0.00%	-	0.00%	-	0.00%	-	0.00%	-	0.00%	-	0.00%	-	0.00%
SEGUROS BANISTMO, S.A.	395,628.42	0.07%	81,650.96	0.02%	7,750,198.55	1.43%	176,790.10	0.03%	160,121.05	0.03%	340,710.10	0.06%	122,346.34	0.02%	1,229,544.38	0.23%
SEGUROS FEDPA, S.A.	63,351.88	0.01%	595.62	0.00%	7,349,214.20	1.35%	23,026.89	0.00%	69,315.90	0.01%	160,882.38	0.03%	42,299.77	0.01%	51.19	0.00%
SEGUROS SURAMERICANA, S.A.	705,832.21	0.13%	-	0.00%	9,273,228.55	1.71%	700,699.55	0.13%	558,843.58	0.10%	59,927.75	0.01%	1,436,146.01	0.26%	1,253,001.94	0.23%
VIVIR COMPAÑIA DE SEGUROS, S.A.	-	0.00%	-	0.00%	-	0.00%	-	0.00%	-	0.00%	-	0.00%	-	0.00%	-	0.00%
WORLDWIDE MEDICAL ASSURANCE, LTD. CORP.	-	0.00%	-	0.00%	-	0.00%	-	0.00%	-	0.00%	-	0.00%	-	0.00%	-	0.00%
<b>SUB-TOTAL</b>	<b>10,962,937.07</b>	<b>2.02%</b>	<b>12,608,558.36</b>	<b>2.32%</b>	<b>98,703,383.30</b>	<b>18.16%</b>	<b>9,615,429.29</b>	<b>1.77%</b>	<b>24,971,007.45</b>	<b>4.59%</b>	<b>7,058,965.49</b>	<b>1.30%</b>	<b>44,529,810.75</b>	<b>8.19%</b>	<b>56,075,552.04</b>	<b>10.32%</b>
SEGUROS BBA CORP.	5,787.47	0.00%	(11,160.78)	0.00%	1,253,606.05	0.23%	62,383.57	0.01%	47,063.11	0.01%	1,941.69	0.00%	482,289.41	0.09%	-	0.00%
BUPA PANAMÁ, S.A	-	0.00%	-	0.00%	-	0.00%	-	0.00%	-	0.00%	-	0.00%	-	0.00%	-	0.00%
LA FLORESTA DE SEGUROS Y VIDA, S.A.	66,424.30	0.01%	-	0.00%	1,319,948.20	0.24%	446,490.70	0.08%	408,716.20	0.08%	-	0.00%	572,137.80	0.11%	567,802.50	0.10%
LA REGIONAL DE SEGUROS, S.A.	-	0.00%	-	0.00%	1,139,204.22	0.21%	11,875.25	0.00%	-	0.00%	-	0.00%	112,202.56	0.02%	50,687.98	0.01%
MERCANTIL PANAMÁ SEGUROS, S.A	-	0.00%	-	0.00%	29,716.76	0.01%	-	0.00%	-	0.00%	-	0.00%	-	0.00%	-	0.00%
SEGUROS CONFIANZA, S.A.	4,572.06	0.00%	(3,000.00)	0.00%	1,427,392.51	0.26%	58,724.56	0.01%	32,332.26	0.01%	3,337.49	0.00%	319,152.15	0.06%	-	0.00%
SEGUROS CONSTITUCIÓN, S.A.	8,759.87	0.00%	116,296.78	0.02%	1,965,647.04	0.36%	157,847.14	0.03%	(398,903.41)	-0.07%	53,549.91	0.01%	823,138.86	0.15%	(983,975.92)	-0.18%
<b>SUB-TOTAL</b>	<b>85,543.70</b>	<b>0.02%</b>	<b>102,136.00</b>	<b>0.02%</b>	<b>7,135,514.78</b>	<b>1.28%</b>	<b>737,321.22</b>	<b>0.13%</b>	<b>89,208.16</b>	<b>0.02%</b>	<b>58,829.09</b>	<b>0.01%</b>	<b>2,308,920.78</b>	<b>0.42%</b>	<b>(365,485.44)</b>	<b>-0.07%</b>
<b>TOTAL</b>	<b>\$11,048,480.77</b>	<b>1.99%</b>	<b>\$12,710,694.36</b>	<b>2.29%</b>	<b>\$105,838,898.08</b>	<b>19.04%</b>	<b>\$10,352,750.51</b>	<b>1.86%</b>	<b>\$25,060,215.61</b>	<b>4.51%</b>	<b>\$7,117,794.58</b>	<b>1.28%</b>	<b>\$46,838,731.53</b>	<b>8.43%</b>	<b>\$55,710,066.60</b>	<b>10.02%</b>



**SUPERINTENDENCIA DE SEGUROS Y REASEGUROS DE PANAMA**  
**Cuadro 02. SINIESTROS BRUTOS INCURRIDOS DE SEGURO DIRECTO CON PARTICIPACIÓN EN EL MERCADO POR RAMOS**  
**Acumulado al Mes de Mayo 2015**

COMPAÑIAS	SINIESTROS BRUTOS INCURRIDOS													
	Total		Vida Individual		Accidentes Personales		Salud		Colectivo de Vida		Incendio		Multirisgos	
	Monto	%	Monto	%	Monto	%	Monto	%	Monto	%	Monto	%	Monto	%
ACE SEGUROS, S.A	634,194.44	0.27%	-	0.00%	21,837.05	0.01%	-	0.00%	-	0.00%	159,738.77	0.07%	15,661.78	0.01%
ACERTA COMPAÑIA DE SEGUROS, S.A.	3,403,636.53	1.43%	92,902.70	0.04%	68,212.45	0.03%	542,970.36	0.23%	92,499.99	0.04%	878,714.02	0.38%	51,617.34	0.02%
AIG. SEGUROS PANAMÁ, S.A.	4,310,308.08	1.81%	-	0.00%	188,194.19	0.08%	-	0.00%	-	0.00%	197,103.37	0.08%	-	0.00%
ALIADO SEGUROS, S.A	1,231,530.30	0.52%	-	0.00%	26,534.79	0.01%	-	0.00%	94,483.52	0.04%	9,988.90	0.00%	48,573.70	0.02%
ASEGURADORA ANCÓN, S.A.	10,459,069.91	4.40%	140,000.00	0.06%	44,475.14	0.02%	3,213,694.63	1.38%	1,234,900.83	0.53%	27,527.35	0.01%	12,044.14	0.01%
ASEGURADORA GLOBAL, S.A	1,607,334.12	0.68%	(300.00)	0.00%	804.16	0.00%	-	0.00%	284,082.71	0.12%	30,774.60	0.01%	-	0.00%
ASSA COMPAÑIA DE SEGUROS, S.A	25,065,690.71	10.53%	2,243,409.87	0.96%	30,113.47	0.01%	9,557,068.65	4.10%	2,973,311.79	1.27%	415,481.61	0.18%	100,934.33	0.04%
ASSICURAZIONI GENERALI, S.p.A.	17,238,733.45	7.24%	1,228,320.94	0.53%	321,190.75	0.14%	3,404,834.53	1.46%	1,786,453.05	0.77%	1,434,435.32	0.61%	844,800.32	0.36%
BANESCO SEGUROS, S.A.	3,925,978.77	1.65%	(62,620.28)	-0.03%	8,000.00	0.00%	203,609.63	0.09%	436,439.40	0.19%	40,550.42	0.02%	1,493,927.77	0.64%
COMPAÑIA INTERNACIONAL DE SEGUROS, S.A.	42,923,025.61	18.04%	2,032,234.01	0.87%	772,303.80	0.33%	12,327,983.42	5.28%	4,976,481.78	2.13%	2,847,951.58	1.22%	(29,927.82)	-0.01%
DEL ISTMO ASSURANCE CORP.	657,678.62	0.28%	-	0.00%	11,564.86	0.00%	37,014.99	0.02%	-	0.00%	-	0.00%	-	0.00%
GENERAL DE SEGUROS, S.A.	5,436,850.13	2.28%	-	0.00%	-	0.00%	-	0.00%	1,313,275.69	0.56%	2,482,934.22	1.06%	2,287.36	0.00%
MAPFRE PANAMÁ, S.A	47,998,180.53	20.17%	5,236,485.11	2.24%	188,675.40	0.08%	10,879,903.64	4.66%	1,438,173.76	0.62%	3,802,783.31	1.63%	-	0.00%
MULTIBANK SEGUROS PANAMÁ	850,886.12	0.36%	-	0.00%	-	0.00%	-	0.00%	504,407.00	0.22%	5,027.73	0.00%	-	0.00%
NACIONAL DE SEGUROS DE PANAMÁ Y CENTROAMÉRICA, S.A.	1,229,101.95	0.52%	-	0.00%	253,917.17	0.11%	-	0.00%	238.15	0.00%	67,582.31	0.03%	-	0.00%
ÓPTIMA COMPAÑIA DE SEGUROS, S.A.	2,611,919.37	1.10%	-	0.00%	37,272.56	0.02%	-	0.00%	247,677.30	0.11%	229,172.18	0.10%	5,822.79	0.00%
PAN AMERICAN LIFE INSURANCE DE PANAMÁ, S.A	26,264,425.89	11.04%	1,588,629.92	0.68%	139,060.73	0.06%	23,399,243.35	10.03%	1,137,491.89	0.49%	-	0.00%	-	0.00%
SAGICOR PANAMÁ	882,178.84	0.37%	-	0.00%	-	0.00%	882,178.84	0.38%	-	0.00%	-	0.00%	-	0.00%
SEGUROS BANISTMO, S.A.	9,883,771.56	4.15%	524,593.00	0.22%	80,735.55	0.03%	(3.00)	0.00%	3,445,297.46	1.48%	439,012.99	0.19%	-	0.00%
SEGUROS FEDPA, S.A.	5,838,222.75	2.45%	50.00	0.00%	127,206.84	0.05%	(9,326.81)	0.00%	1,087,294.28	0.47%	526,371.75	0.23%	667.99	0.00%
SEGUROS SURAMERICANA, S.A.	12,443,408.50	5.23%	1,411,932.26	0.61%	173,612.14	0.07%	-	0.00%	242,201.70	0.10%	4,564,988.89	1.96%	-	0.00%
VIVIR COMPAÑIA DE SEGUROS, S.A.	337,340.65	0.14%	-	0.00%	-	0.00%	337,340.65	0.14%	-	0.00%	-	0.00%	-	0.00%
WORLDWIDE MEDICAL ASSURANCE, LTD. CORP.	8,140,171.72	3.42%	-	0.00%	3,692.16	0.00%	8,097,804.83	3.47%	38,674.73	0.02%	-	0.00%	-	0.00%
<b>SUB-TOTAL</b>	<b>233,373,638.55</b>	<b>98.08%</b>	<b>14,435,637.53</b>	<b>6.19%</b>	<b>2,497,403.21</b>	<b>1.07%</b>	<b>72,874,317.71</b>	<b>31.23%</b>	<b>21,333,385.03</b>	<b>9.14%</b>	<b>18,160,139.32</b>	<b>7.78%</b>	<b>2,546,409.70</b>	<b>1.09%</b>
SEGUROS BBA CORP.	478,347.91	0.20%	-	0.00%	11,583.20	0.00%	24,640.36	0.01%	503.88	0.00%	27,844.07	0.01%	-	0.00%
BUPA PANAMÁ, S.A	-	0.00%	-	0.00%	-	0.00%	-	0.00%	-	0.00%	-	0.00%	-	0.00%
LA FLORESTA DE SEGUROS Y VIDA, S.A.	989,561.20	0.42%	10,133.90	0.00%	10,144.70	0.00%	55,674.20	0.02%	-	0.00%	50,722.50	0.02%	-	0.00%
LA REGIONAL DE SEGUROS, S.A.	267,335.09	0.11%	-	0.00%	-	0.00%	-	0.00%	-	0.00%	34,748.77	0.01%	350.00	0.00%
MERCANTIL PANAMÁ SEGUROS, S.A	-	0.00%	-	0.00%	-	0.00%	-	0.00%	-	0.00%	-	0.00%	-	0.00%
SEGUROS CONFIANZA, S.A.	286,916.73	0.12%	-	0.00%	12,493.01	0.01%	-	0.00%	-	0.00%	24,446.05	0.01%	-	0.00%
SEGUROS CONSTITUCIÓN, S.A.	2,550,065.52	1.07%	-	0.00%	-	0.00%	-	0.00%	-	0.00%	52,226.69	0.02%	-	0.00%
<b>SUB-TOTAL</b>	<b>4,572,226.45</b>	<b>1.92%</b>	<b>10,133.90</b>	<b>0.00%</b>	<b>34,220.91</b>	<b>0.01%</b>	<b>80,314.56</b>	<b>0.03%</b>	<b>503.88</b>	<b>0.00%</b>	<b>189,988.08</b>	<b>0.08%</b>	<b>350.00</b>	<b>0.00%</b>
<b>TOTAL</b>	<b>\$237,945,865.00</b>	<b>100.00%</b>	<b>\$14,445,771.43</b>	<b>6.07%</b>	<b>\$2,531,624.12</b>	<b>1.06%</b>	<b>\$72,954,632.27</b>	<b>30.66%</b>	<b>\$21,333,888.91</b>	<b>8.97%</b>	<b>\$18,350,127.40</b>	<b>7.71%</b>	<b>\$2,546,759.70</b>	<b>1.07%</b>

**SUPERINTENDENCIA DE SEGUROS Y REASEGUROS DE PANAMA**  
**Cuadro 02. SINIESTROS BRUTOS INCURRIDOS DE SEGURO DIRECTO CON PARTICIPACIÓN EN EL MERCADO POR RAMOS**  
**Acumulado al Mes de Mayo 2015**

COMPAÑIAS	SINIESTROS BRUTOS INCURRIDOS															
	Transporte		Casco		Automóvil		Ramos Técnicos		Resp. Civil		Robo		Fianzas		Otros	
	Monto	%	Monto	%	Monto	%	Monto	%	Monto	%	Monto	%	Monto	%	Monto	%
ACE SEGUROS, S.A	33,900.14	0.01%	-	0.00%	-	0.00%	46,953.95	0.02%	356,102.75	0.15%	-	0.00%	-	0.00%	-	0.00%
ACERTA COMPAÑIA DE SEGUROS, S.A.	16,562.63	0.01%	152,652.70	0.07%	1,315,464.55	0.56%	115,171.91	0.05%	48,158.05	0.02%	(20,857.33)	-0.01%	3,278.57	0.00%	46,288.59	0.02%
AIG. SEGUROS PANAMÁ, S.A.	110,068.30	0.05%	-	0.00%	529,865.59	0.23%	-	0.00%	45,684.39	0.02%	189,723.05	0.08%	2,854,580.19	1.22%	195,089.00	0.08%
ALIADO SEGUROS, S.A	(7,379.39)	0.00%	3,504.39	0.00%	909,417.89	0.39%	(3,480.40)	0.00%	134,806.09	0.06%	1,478.86	0.00%	-	0.00%	13,601.95	0.01%
ASEGURADORA ANCÓN, S.A.	85,026.03	0.04%	(17,114.36)	-0.01%	4,689,754.63	2.01%	(2,527.66)	0.00%	802,761.23	0.34%	7,194.12	0.00%	93,859.29	0.04%	127,474.54	0.05%
ASEGURADORA GLOBAL, S.A	-	0.00%	-	0.00%	1,106,755.69	0.47%	-	0.00%	-	0.00%	-	0.00%	-	0.00%	185,216.96	0.08%
ASSA COMPAÑIA DE SEGUROS, S.A	529,735.14	0.23%	476,787.50	0.20%	5,405,656.39	2.32%	982,866.98	0.42%	472,733.94	0.20%	473,968.53	0.20%	151,188.05	0.06%	1,252,434.46	0.54%
ASSICURAZIONI GENERALI, S.p.A.	191,765.67	0.08%	269,104.69	0.12%	6,709,881.73	2.88%	330,982.94	0.14%	284,408.00	0.12%	239,494.86	0.10%	42,620.80	0.02%	150,439.85	0.06%
BANESCO SEGUROS, S.A.	37,587.92	0.02%	7,169.00	0.00%	1,291,605.16	0.55%	98,496.60	0.04%	198,485.62	0.09%	33,728.15	0.01%	(24,999.00)	-0.01%	163,998.38	0.07%
COMPAÑIA INTERNACIONAL DE SEGUROS, S.A.	242,065.55	0.10%	597,302.95	0.26%	10,455,736.08	4.48%	887,616.96	0.38%	146,561.20	0.06%	336,728.84	0.14%	3,348,450.83	1.43%	3,981,536.43	1.71%
DEL ISTMO ASSURANCE CORP.	-	0.00%	-	0.00%	-	0.00%	-	0.00%	3,063.95	0.00%	-	0.00%	606,034.82	0.26%	-	0.00%
GENERAL DE SEGUROS, S.A.	23,216.09	0.01%	-	0.00%	933,378.23	0.40%	69,034.61	0.03%	33,558.30	0.01%	42,257.64	0.02%	-	0.00%	536,907.99	0.23%
MAPFRE PANAMÁ, S.A	316,866.32	0.14%	6,269,160.48	2.69%	8,933,469.33	3.83%	-	0.00%	81,443.81	0.03%	212,777.72	0.09%	9,807,289.53	4.20%	831,152.12	0.36%
MULTIBANK SEGUROS PANAMÁ	-	0.00%	-	0.00%	116,707.14	0.05%	60,000.00	0.03%	4,117.40	0.00%	9,137.86	0.00%	-	0.00%	151,488.99	0.06%
NACIONAL DE SEGUROS DE PANAMÁ Y CENTROAMÉRICA, S.A.	2,273.26	0.00%	1,312.38	0.00%	835,542.79	0.36%	39,500.01	0.02%	14,585.36	0.01%	(2,132.69)	0.00%	8,100.00	0.00%	8,183.21	0.00%
ÓPTIMA COMPAÑIA DE SEGUROS, S.A.	32,357.44	0.01%	99,383.82	0.04%	698,362.53	0.30%	(5,632.87)	0.00%	40,309.06	0.02%	101,638.57	0.04%	2,736.10	0.00%	1,122,819.89	0.48%
PAN AMERICAN LIFE INSURANCE DE PANAMÁ, S.A	-	0.00%	-	0.00%	-	0.00%	-	0.00%	-	0.00%	-	0.00%	-	0.00%	-	0.00%
SAGICOR PANAMÁ	-	0.00%	-	0.00%	-	0.00%	-	0.00%	-	0.00%	-	0.00%	-	0.00%	-	0.00%
SEGUROS BANISTMO, S.A.	381,975.95	0.16%	26,051.40	0.01%	4,749,150.77	2.03%	16,563.89	0.01%	(11,943.34)	-0.01%	131,590.40	0.06%	(946.30)	0.00%	101,692.79	0.04%
SEGUROS FEDPA, S.A.	(340.75)	0.00%	-	0.00%	4,083,423.03	1.75%	342.00	0.00%	67.53	0.00%	22,466.89	0.01%	-	0.00%	-	0.00%
SEGUROS SURAMERICANA, S.A.	266,090.35	0.11%	-	0.00%	4,988,211.10	2.14%	119,998.71	0.05%	26,809.63	0.01%	(4,086.63)	0.00%	238,495.81	0.10%	415,154.54	0.18%
VIVIR COMPAÑIA DE SEGUROS, S.A.	-	0.00%	-	0.00%	-	0.00%	-	0.00%	-	0.00%	-	0.00%	-	0.00%	-	0.00%
WORLDWIDE MEDICAL ASSURANCE, LTD. CORP.	-	0.00%	-	0.00%	-	0.00%	-	0.00%	-	0.00%	-	0.00%	-	0.00%	-	0.00%
<b>SUB-TOTAL</b>	<b>2,261,770.65</b>	<b>0.97%</b>	<b>7,885,314.95</b>	<b>3.38%</b>	<b>57,752,382.63</b>	<b>24.75%</b>	<b>2,755,887.63</b>	<b>1.18%</b>	<b>2,681,712.97</b>	<b>1.15%</b>	<b>1,775,108.84</b>	<b>0.76%</b>	<b>17,130,688.69</b>	<b>7.34%</b>	<b>9,283,479.69</b>	<b>3.98%</b>
SEGUROS BBA CORP.	-	0.00%	-	0.00%	351,736.16	0.15%	15,329.13	0.01%	2,294.25	0.00%	3,760.98	0.00%	40,655.88	0.02%	-	0.00%
BUPA PANAMÁ, S.A	-	0.00%	-	0.00%	-	0.00%	-	0.00%	-	0.00%	-	0.00%	-	0.00%	-	0.00%
LA FLORESTA DE SEGUROS Y VIDA, S.A.	(810.20)	0.00%	-	0.00%	795,403.50	0.34%	26,204.70	0.01%	(55.20)	0.00%	-	0.00%	-	0.00%	42,143.10	0.02%
LA REGIONAL DE SEGUROS, S.A.	-	0.00%	-	0.00%	230,236.32	0.10%	-	0.00%	-	0.00%	-	0.00%	-	0.00%	2,000.00	0.00%
MERCANTIL PANAMÁ SEGUROS, S.A	-	0.00%	-	0.00%	-	0.00%	-	0.00%	-	0.00%	-	0.00%	-	0.00%	-	0.00%
SEGUROS CONFIANZA, S.A.	-	0.00%	-	0.00%	226,226.16	0.10%	-	0.00%	2,053.51	0.00%	-	0.00%	21,698.00	0.01%	-	0.00%
SEGUROS CONSTITUCIÓN, S.A.	32,655.25	0.01%	194,000.00	0.08%	989,028.05	0.42%	4,893.00	0.00%	(147,155.01)	-0.06%	(3,534.60)	0.00%	1,341,112.62	0.57%	86,839.52	0.04%
<b>SUB-TOTAL</b>	<b>31,845.05</b>	<b>0.01%</b>	<b>194,000.00</b>	<b>0.08%</b>	<b>2,592,630.19</b>	<b>1.09%</b>	<b>46,426.83</b>	<b>0.02%</b>	<b>(142,862.45)</b>	<b>-0.06%</b>	<b>226.38</b>	<b>0.00%</b>	<b>1,403,466.50</b>	<b>0.59%</b>	<b>130,982.62</b>	<b>0.06%</b>
<b>TOTAL</b>	<b>\$2,293,615.70</b>	<b>0.96%</b>	<b>\$8,079,314.95</b>	<b>3.40%</b>	<b>\$60,345,012.82</b>	<b>25.36%</b>	<b>\$2,802,314.46</b>	<b>1.18%</b>	<b>\$2,538,850.52</b>	<b>1.07%</b>	<b>\$1,775,335.22</b>	<b>0.75%</b>	<b>\$18,534,155.19</b>	<b>7.79%</b>	<b>\$9,414,462.31</b>	<b>3.96%</b>

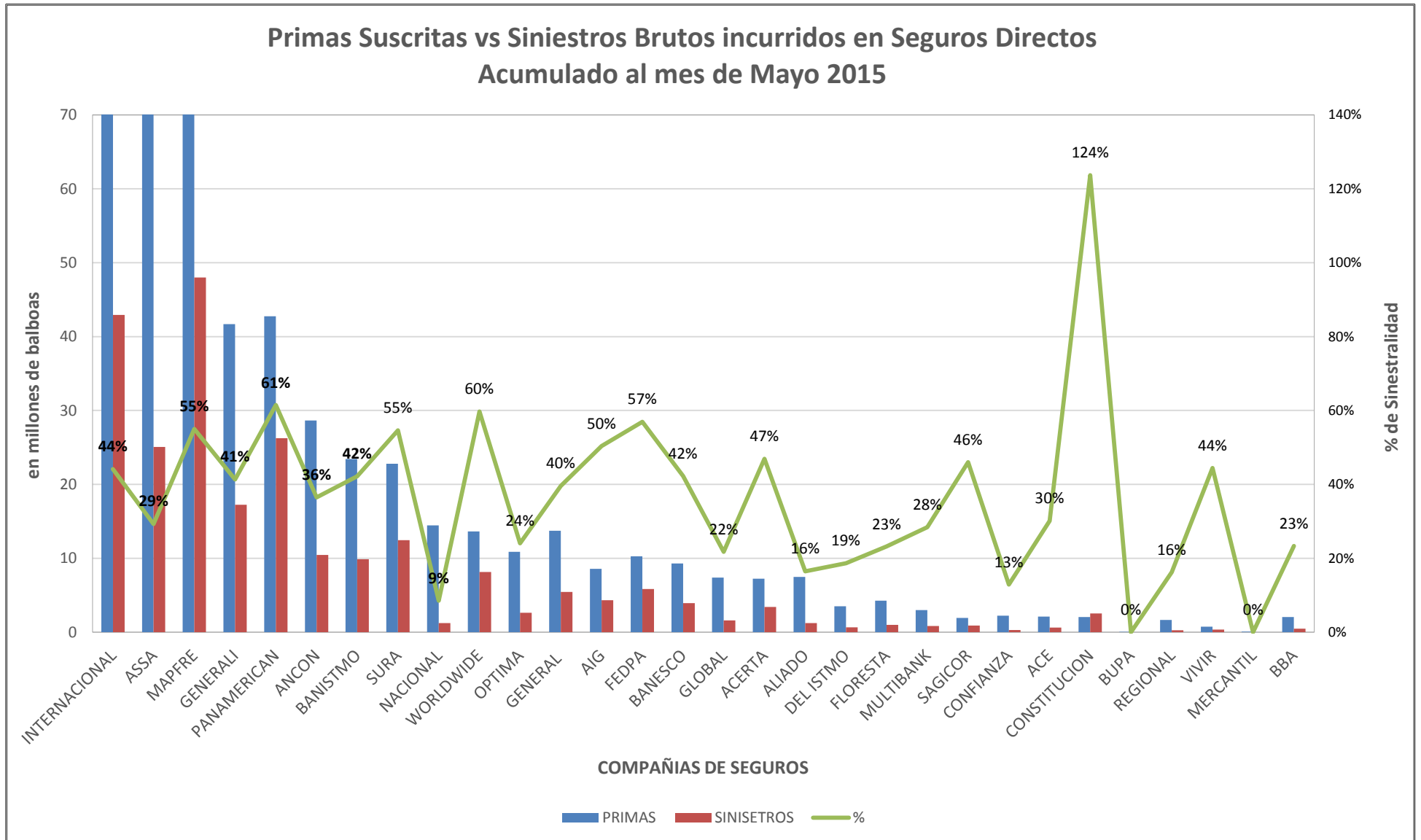


**SUPERINTENDENCIA DE SEGUROS Y REASEGUROS DE PANAMA**  
**Cuadro 03. POLIZAS VIGENTES DE SEGURO DIRECTO CON PARTICIPACIÓN EN EL MERCADO POR RAMOS**  
**Acumulado al Mes de Mayo 2015**

COMPAÑIAS	POLIZAS VIGENTES													
	Total		Vida Individual		Accidentes Personales		Salud		Colectivo de Vida		Incendio		Multiriesgos	
	Cantidad	%	Cantidad	%	Cantidad	%	Cantidad	%	Cantidad	%	Cantidad	%	Cantidad	%
ACE SEGUROS, S.A	52	0.00%	-	0.00%	14	0.00%	-	0.00%	2	0.00%	5	0.00%	5	0.00%
ACERTA COMPAÑIA DE SEGUROS, S.A.	1,603	0.14%	117	0.01%	23	0.00%	-	0.00%	1	0.00%	120	0.01%	39	0.00%
AIG. SEGUROS PANAMÁ, S.A.	13,125	1.15%	-	0.00%	1,321	0.12%	-	0.00%	-	0.00%	2,045	0.19%	192	0.02%
ALIADO SEGUROS, S.A	1,090	0.10%	-	0.00%	9	0.00%	-	0.00%	9	0.00%	30	0.00%	18	0.00%
ASEGURADORA ANCÓN, S.A.	48,687	4.27%	1,480	0.14%	609	0.06%	5,407	0.50%	1,974	0.18%	5,011	0.47%	1,202	0.11%
ASEGURADORA GLOBAL, S.A	17,051	1.50%	470	0.04%	281	0.03%	-	0.00%	4	0.00%	7,192	0.67%	-	0.00%
ASSA COMPAÑIA DE SEGUROS, S.A	109,008	9.56%	27,547	2.56%	6,564	0.61%	9,897	0.92%	2,177	0.20%	10,129	0.94%	3,221	0.30%
ASSICURAZIONI GENERALI, S.p.A.	146,472	12.85%	37,769	3.51%	3,442	0.32%	176	0.02%	234	0.02%	28,982	2.69%	11,488	1.07%
BANESCO SEGUROS, S.A.	1,658	0.15%	391	0.04%	38	0.00%	-	0.00%	6	0.00%	160	0.01%	96	0.01%
COMPAÑIA INTERNACIONAL DE SEGUROS, S.A.	210,680	18.48%	27,754	2.58%	6,785	0.63%	16,331	1.52%	418	0.04%	37,424	3.48%	2,017	0.19%
DEL ISTMO ASSURANCE CORP.	4,699	0.41%	145	0.01%	113	0.01%	137	0.01%	100	0.01%	67	0.01%	-	0.00%
GENERAL DE SEGUROS, S.A.	33,547	2.94%	-	0.00%	13	0.00%	-	0.00%	82	0.01%	32,762	3.04%	24	0.00%
MAPFRE PANAMÁ, S.A	131,151	11.50%	24,141	2.24%	1,320	0.12%	13,193	1.23%	203	0.02%	22,768	2.12%	-	0.00%
MULTIBANK SEGUROS PANAMÁ	9,144	0.80%	233	0.02%	3,509	0.33%	-	0.00%	6	0.00%	3,345	0.31%	106	0.01%
NACIONAL DE SEGUROS DE PANAMÁ Y CENTROAMÉRICA, S.A.	1,852	0.16%	17	0.00%	42	0.00%	-	0.00%	2	0.00%	57	0.01%	-	0.00%
ÓPTIMA COMPAÑIA DE SEGUROS, S.A.	11,410	1.00%	-	0.00%	388	0.04%	-	0.00%	372	0.03%	3,528	0.33%	349	0.03%
PAN AMERICAN LIFE INSURANCE DE PANAMÁ, S.A	29,779	2.61%	19,742	1.83%	8,847	0.82%	-	0.00%	1,190	0.11%	-	0.00%	-	0.00%
SAGICOR PANAMÁ	41	0.00%	15	0.00%	1	0.00%	20	0.00%	5	0.00%	-	0.00%	-	0.00%
SEGUROS BANISTMO, S.A.	100,698	8.83%	18,021	1.67%	5,771	0.54%	136	0.01%	12,759	1.19%	28,886	2.68%	-	0.00%
SEGUROS FEDPA, S.A.	97,427	8.54%	250	0.02%	17,412	1.62%	1	0.00%	536	0.05%	2,010	0.19%	282	0.03%
SEGUROS SURAMERICANA, S.A.	99,240	8.70%	27,740	2.58%	4,486	0.42%	-	0.00%	241	0.02%	9,794	0.91%	-	0.00%
VIVIR COMPAÑIA DE SEGUROS, S.A.	1,395	0.12%	-	0.00%	-	0.00%	1,369	0.13%	26	0.00%	-	0.00%	-	0.00%
WORLDWIDE MEDICAL ASSURANCE, LTD. CORP.	6,134	0.54%	129	0.01%	-	0.00%	6,005	0.56%	-	0.00%	-	0.00%	-	0.00%
<b>SUB-TOTAL</b>	<b>1,075,943</b>	<b>94.36%</b>	<b>185,961</b>	<b>17.28%</b>	<b>60,988</b>	<b>5.67%</b>	<b>52,672</b>	<b>4.90%</b>	<b>20,347</b>	<b>1.89%</b>	<b>194,315</b>	<b>18.06%</b>	<b>19,039</b>	<b>1.77%</b>
SEGUROS BBA CORP.	3,121	0.27%	29	0.00%	79	0.01%	40	0.00%	79	0.01%	8	0.00%	7	0.00%
BUPA PANAMÁ, S.A	19	0.00%	-	0.00%	-	0.00%	19	0.00%	-	0.00%	-	0.00%	-	0.00%
LA FLORESTA DE SEGUROS Y VIDA, S.A.	10,102	0.89%	172	0.02%	54	0.01%	653	0.06%	21	0.00%	745	0.07%	-	0.00%
LA REGIONAL DE SEGUROS, S.A.	584	0.05%	14	0.00%	2	0.00%	-	0.00%	3	0.00%	31	0.00%	6	0.00%
MERCANTIL PANAMÁ SEGUROS, S.A	16	0.00%	3	0.00%	6	0.00%	-	0.00%	-	0.00%	-	0.00%	1	0.00%
SEGUROS CONFIANZA, S.A.	32,762	2.87%	589	0.05%	136	0.01%	-	0.00%	65	0.01%	435	0.04%	215	0.02%
SEGUROS CONSTITUCIÓN, S.A.	17,740	1.56%	384	0.04%	104	0.01%	-	0.00%	13	0.00%	838	0.08%	65	0.01%
<b>SUB-TOTAL</b>	<b>64,344</b>	<b>5.64%</b>	<b>1,191</b>	<b>0.10%</b>	<b>381</b>	<b>0.03%</b>	<b>712</b>	<b>0.06%</b>	<b>181</b>	<b>0.02%</b>	<b>2,057</b>	<b>0.18%</b>	<b>294</b>	<b>0.03%</b>
<b>TOTAL</b>	<b>1,140,287</b>	<b>100.00%</b>	<b>187,152</b>	<b>16.41%</b>	<b>61,369</b>	<b>5.38%</b>	<b>53,384</b>	<b>4.68%</b>	<b>20,528</b>	<b>1.80%</b>	<b>196,372</b>	<b>17.22%</b>	<b>19,333</b>	<b>1.70%</b>

**SUPERINTENDENCIA DE SEGUROS Y REASEGUROS DE PANAMA**  
**Cuadro 03. POLIZAS VIGENTES DE SEGURO DIRECTO CON PARTICIPACIÓN EN EL MERCADO POR RAMOS**  
**Acumulado al Mes de Mayo 2015**

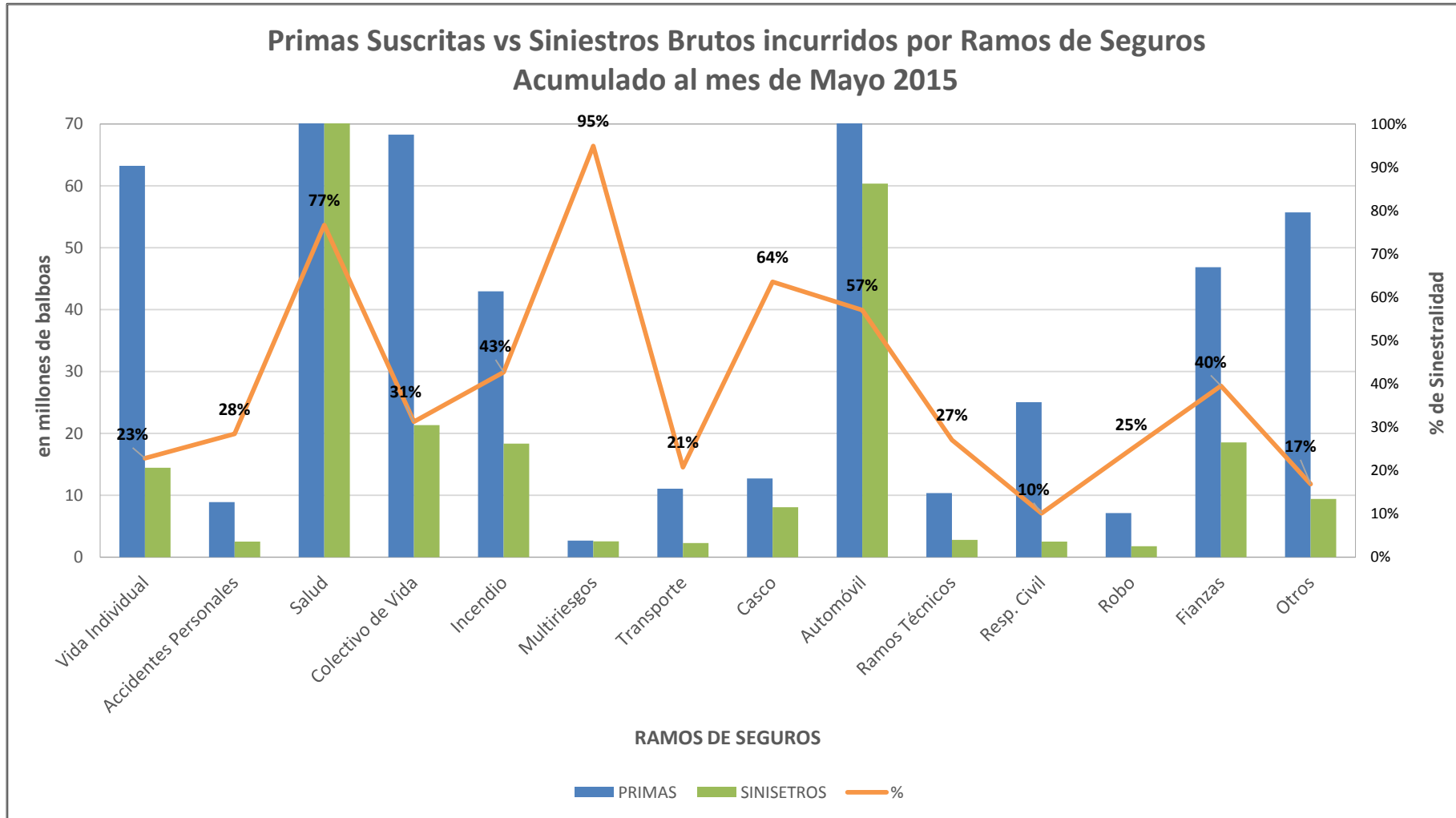
COMPAÑIAS	POLIZAS VIGENTES															
	Transporte		Casco		Automóvil		Ramos Técnicos		Resp. Civil		Robo		Fianzas		Otros	
	Cantidad	%	Cantidad	%	Cantidad	%	Cantidad	%	Cantidad	%	Cantidad	%	Cantidad	%	Cantidad	%
ACE SEGUROS, S.A	-	0.00%	-	0.00%	-	0.00%	1	0.00%	18	0.00%	-	0.00%	7	0.00%	-	0.00%
ACERTA COMPAÑÍA DE SEGUROS, S.A.	12	0.00%	7	0.00%	1,036	0.10%	51	0.00%	64	0.01%	10	0.00%	108	0.01%	15	0.00%
AIG. SEGUROS PANAMÁ, S.A.	48	0.00%	-	0.00%	8,652	0.80%	-	0.00%	465	0.04%	14	0.00%	349	0.03%	39	0.00%
ALIADO SEGUROS, S.A	5	0.00%	1	0.00%	862	0.08%	11	0.00%	15	0.00%	-	0.00%	119	0.01%	11	0.00%
ASEGURADORA ANCÓN, S.A.	433	0.04%	79	0.01%	29,386	2.73%	476	0.04%	640	0.06%	117	0.01%	1,751	0.16%	122	0.01%
ASEGURADORA GLOBAL, S.A	-	0.00%	-	0.00%	8,647	0.80%	-	0.00%	-	0.00%	-	0.00%	417	0.04%	40	0.00%
ASSA COMPAÑÍA DE SEGUROS, S.A	784	0.07%	190	0.02%	31,252	2.90%	1,641	0.15%	2,588	0.24%	1,961	0.18%	9,820	0.91%	1,237	0.11%
ASSICURAZIONI GENERALI, S.p.A.	7,115	0.66%	306	0.03%	51,705	4.81%	1,765	0.16%	2,014	0.19%	537	0.05%	707	0.07%	232	0.02%
BANESCO SEGUROS, S.A.	24	0.00%	8	0.00%	617	0.06%	57	0.01%	82	0.01%	8	0.00%	163	0.02%	8	0.00%
COMPAÑÍA INTERNACIONAL DE SEGUROS, S.A.	16,399	1.52%	127	0.01%	90,937	8.45%	1,387	0.13%	1,876	0.17%	356	0.03%	8,622	0.80%	247	0.02%
DEL ISTMO ASSURANCE CORP.	-	0.00%	2	0.00%	-	0.00%	78	0.01%	101	0.01%	6	0.00%	3,950	0.37%	-	0.00%
GENERAL DE SEGUROS, S.A.	9	0.00%	-	0.00%	528	0.05%	32	0.00%	17	0.00%	13	0.00%	62	0.01%	5	0.00%
MAPFRE PANAMÁ, S.A	954	0.09%	207	0.02%	59,860	5.56%	-	0.00%	1,233	0.11%	408	0.04%	3,094	0.29%	3,770	0.35%
MULTIBANK SEGUROS PANAMÁ	5	0.00%	3	0.00%	1,619	0.15%	94	0.01%	66	0.01%	20	0.00%	135	0.01%	3	0.00%
NACIONAL DE SEGUROS DE PANAMÁ Y CENTROAMÉRICA, S.A.	8	0.00%	1	0.00%	1,407	0.13%	8	0.00%	17	0.00%	12	0.00%	280	0.03%	1	0.00%
ÓPTIMA COMPAÑÍA DE SEGUROS, S.A.	157	0.01%	70	0.01%	4,480	0.42%	373	0.03%	553	0.05%	146	0.01%	921	0.09%	73	0.01%
PAN AMERICAN LIFE INSURANCE DE PANAMÁ, S.A	-	0.00%	-	0.00%	-	0.00%	-	0.00%	-	0.00%	-	0.00%	-	0.00%	-	0.00%
SAGICOR PANAMÁ	-	0.00%	-	0.00%	-	0.00%	-	0.00%	-	0.00%	-	0.00%	-	0.00%	-	0.00%
SEGUROS BANISTMO, S.A.	394	0.04%	51	0.00%	32,615	3.03%	556	0.05%	595	0.06%	383	0.04%	384	0.04%	147	0.01%
SEGUROS FEDPA, S.A.	299	0.03%	9	0.00%	76,009	7.06%	84	0.01%	183	0.02%	80	0.01%	270	0.03%	2	0.00%
SEGUROS SURAMERICANA, S.A.	418	0.04%	-	0.00%	47,658	4.43%	995	0.09%	5,218	0.48%	339	0.03%	2,338	0.22%	13	0.00%
VIVIR COMPAÑÍA DE SEGUROS, S.A.	-	0.00%	-	0.00%	-	0.00%	-	0.00%	-	0.00%	-	0.00%	-	0.00%	-	0.00%
WORLDWIDE MEDICAL ASSURANCE, LTD. CORP.	-	0.00%	-	0.00%	-	0.00%	-	0.00%	-	0.00%	-	0.00%	-	0.00%	-	0.00%
<b>SUB-TOTAL</b>	<b>27,064</b>	<b>2.52%</b>	<b>1,061</b>	<b>0.10%</b>	<b>447,270</b>	<b>41.57%</b>	<b>7,609</b>	<b>0.71%</b>	<b>15,745</b>	<b>1.46%</b>	<b>4,410</b>	<b>0.41%</b>	<b>33,497</b>	<b>3.11%</b>	<b>5,965</b>	<b>0.55%</b>
SEGUROS BBA CORP.	15	0.00%	-	0.00%	2,734	0.25%	25	0.00%	16	0.00%	6	0.00%	83	0.01%	-	0.00%
BUPA PANAMÁ, S.A	-	0.00%	-	0.00%	-	0.00%	-	0.00%	-	0.00%	-	0.00%	-	0.00%	-	0.00%
LA FLORESTA DE SEGUROS Y VIDA, S.A.	157	0.01%	-	0.00%	6,615	0.61%	25	0.00%	502	0.05%	-	0.00%	968	0.09%	190	0.02%
LA REGIONAL DE SEGUROS, S.A.	-	0.00%	-	0.00%	490	0.05%	2	0.00%	-	0.00%	-	0.00%	23	0.00%	13	0.00%
MERCANTIL PANAMÁ SEGUROS, S.A	-	0.00%	-	0.00%	6	0.00%	-	0.00%	-	0.00%	-	0.00%	-	0.00%	-	0.00%
SEGUROS CONFIANZA, S.A.	30	0.00%	2	0.00%	29,988	2.79%	86	0.01%	144	0.01%	17	0.00%	1,055	0.10%	-	0.00%
SEGUROS CONSTITUCIÓN, S.A.	68	0.01%	39	0.00%	15,138	1.41%	-	0.00%	235	0.02%	41	0.00%	725	0.07%	90	0.01%
<b>SUB-TOTAL</b>	<b>270</b>	<b>0.02%</b>	<b>41</b>	<b>0.00%</b>	<b>54,971</b>	<b>4.82%</b>	<b>138</b>	<b>0.01%</b>	<b>897</b>	<b>0.08%</b>	<b>64</b>	<b>0.01%</b>	<b>2,854</b>	<b>0.25%</b>	<b>293</b>	<b>0.03%</b>
<b>TOTAL</b>	<b>27,334</b>	<b>2.40%</b>	<b>1,102</b>	<b>0.10%</b>	<b>502,241</b>	<b>44.05%</b>	<b>7,747</b>	<b>0.68%</b>	<b>16,642</b>	<b>1.46%</b>	<b>4,474</b>	<b>0.39%</b>	<b>36,351</b>	<b>3.19%</b>	<b>6,258</b>	<b>0.55%</b>





Superintendencia de Seguros  
y Reaseguros de Panamá  
1956

## SUPERINTENDENCIA DE SEGUROS Y REASEGUROS DE PANAMA







Superintendencia de Seguros  
y Reaseguros de Panamá  
1956

## SUPERINTENDENCIA DE SEGUROS Y REASEGUROS DE PANAMA

### Pólizas Vigentes por Ramos de Seguros Al mes de Mayo 2015

