



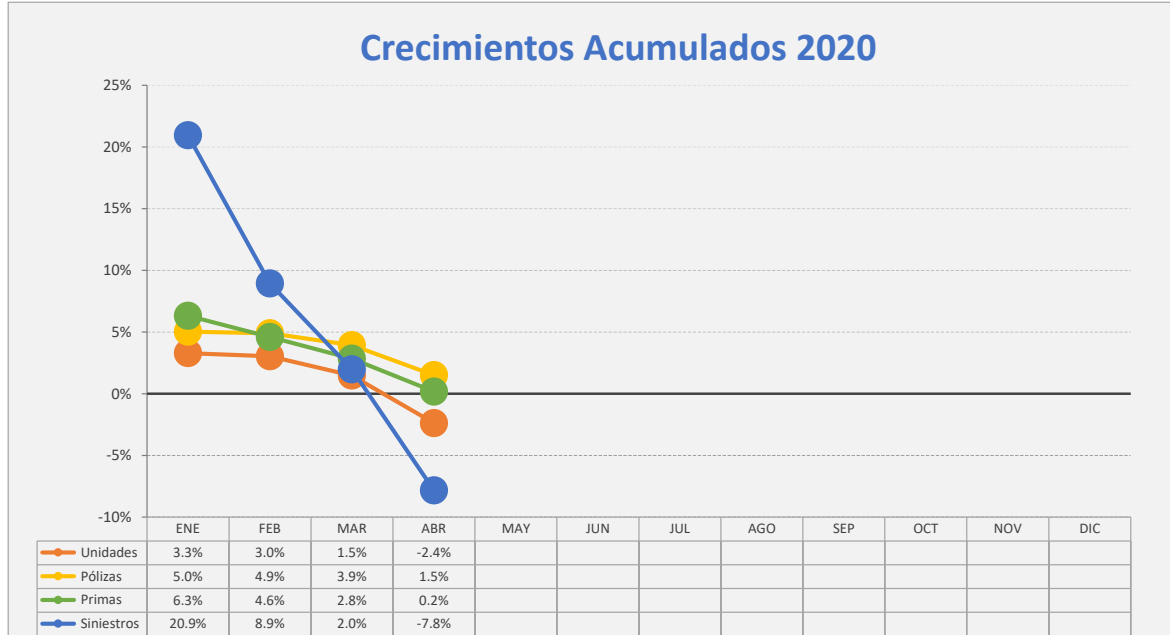
SUPERINTENDENCIA DE SEGUROS Y REASEGUROS DE PANAMÁ
RESUMEN ACUMULADOS AL 30 DE ABRIL 2020
COMPARATIVO DE POBLACIÓN, PÓLIZAS, PRIMAS Y SINIESTROS DE SEGURO DIRECTO TOTALES (LOCAL Y EXTERIOR)
RESUMEN COMPARATIVOS

Ramos de Seguros TOTAL	UNIDADES ASEGURADAS				POLIZAS VIGENTES				PRIMAS SUSCRITAS				SINIESTROS PAGADOS			
	ABRIL		VARIACIÓN		ABRIL		VARIACIÓN		ACUMULADOS		VARIACIÓN		ACUMULADOS		VARIACIÓN	
	2020	2019	Absoluta	Porcentual	2020	2019	Absoluta	Porcentual	2020	2019	Absoluta	Porcentual	2020	2019	Absoluta	Porcentual
Vida Individual	263,997	269,013	(5,016)	-1.9%	254,432	253,702	730	0.3%	54,156,270.42	55,369,756.17	(1,213,485.75)	-2.2%	10,529,977.66	17,076,122.55	(6,546,144.89)	-38.3%
Accidentes Personales	468,432	575,052	(106,620)	-18.5%	153,312	151,802	1,510	1.0%	8,532,493.20	11,620,318.83	(3,087,825.63)	-26.6%	1,678,498.22	1,718,431.68	(39,933.46)	-2.3%
Salud	432,922	442,440	(9,518)	-2.2%	100,067	94,291	5,776	6.1%	113,669,107.15	107,605,270.72	6,063,836.43	5.6%	77,372,848.82	78,724,036.94	(1,351,188.12)	-1.7%
Colectivos de Vida	1,088,381	1,058,701	29,680	2.8%	73,122	59,385	13,737	23.1%	79,293,788.44	75,070,530.86	4,223,257.58	5.6%	17,690,752.40	19,914,797.73	(2,224,045.33)	-11.2%
Incendio y Líneas Aliadas (*)	418,131	417,839	292	0.1%	274,948	251,029	23,919	9.5%	53,397,283.57	49,285,109.03	4,112,174.54	8.3%	9,572,007.07	6,502,620.05	3,069,387.02	47.2%
Multirisgo	28,100	26,935	1,165	4.3%	26,421	25,417	1,004	4.0%	1,995,678.64	2,512,761.44	(517,082.80)	-20.6%	740,676.40	731,968.22	8,708.18	1.2%
Transporte de Carga	37,307	36,979	328	0.9%	32,659	32,513	146	0.4%	8,228,703.77	8,042,635.94	186,067.83	2.3%	1,900,638.22	1,619,709.34	280,928.88	17.3%
Casco	1,514	1,511	3	0.2%	1,023	1,014	9	0.9%	8,104,790.41	7,649,608.11	455,182.30	6.0%	2,137,179.63	1,816,293.89	320,885.74	17.7%
Automóvil	907,171	924,913	(17,742)	-1.9%	801,357	824,040	(22,683)	-2.8%	83,024,862.73	104,515,133.12	(21,490,270.39)	-20.6%	53,026,170.17	65,464,007.66	(12,437,837.49)	-19.0%
Ramos Técnicos	14,304	13,657	647	4.7%	9,795	10,262	(467)	-4.6%	5,641,727.44	9,586,599.95	(3,944,872.51)	-41.1%	1,036,559.71	997,772.32	38,787.39	3.9%
Responsabilidad Civil	19,308	19,681	(373)	-1.9%	18,199	18,420	(221)	-1.2%	12,005,089.13	13,254,746.27	(1,249,657.14)	-9.4%	2,123,426.58	1,787,349.34	336,077.24	18.8%
Robo	4,319	4,333	(14)	-0.3%	3,745	3,755	(10)	-0.3%	1,079,213.63	2,920,281.76	(1,841,068.13)	-63.0%	339,225.24	402,505.35	(63,280.11)	-15.7%
Fianzas	71,872	67,670	4,202	6.2%	70,332	66,418	3,914	5.9%	54,774,420.15	39,668,621.83	15,105,798.32	38.1%	23,639,757.63	23,783,341.96	(143,584.33)	-0.6%
Otros	80,135	70,625	9,510	13.5%	7,955	8,219	(264)	-3.2%	33,730,976.02	29,612,016.80	4,118,959.22	13.9%	7,414,619.81	6,443,798.86	970,820.95	15.1%
TOTAL LOCAL Y EXTERIOR	3,835,893	3,929,349	(93,456)	-2.4%	1,827,367	1,800,267	27,100	1.5%	517,634,404.70	516,713,390.83	921,013.86	0.2%	209,202,337.56	226,982,755.89	(17,780,418.33)	-7.8%
Ramos de Personas	2,253,732	2,345,206	(91,474)	-3.9%	580,933	559,180	21,753	3.9%	255,651,659.21	249,665,876.58	5,985,782.63	2.4%	107,272,077.10	117,433,388.90	(10,161,311.80)	-8.7%
Ramos Generales	1,582,161	1,584,143	(1,982)	-0.1%	1,246,434	1,241,087	5,347	0.4%	261,982,745.49	267,047,514.25	(5,064,768.76)	-1.9%	101,930,260.46	109,549,366.99	(7,619,106.53)	-7.0%
Totales	3,835,893	3,929,349	(93,456)	-2.4%	1,827,367	1,800,267	27,100	1.5%	\$517,634,404.70	\$516,713,390.83	921,013.86	0.2%	\$209,202,337.56	\$226,982,755.89	(17,780,418.33)	-7.8%

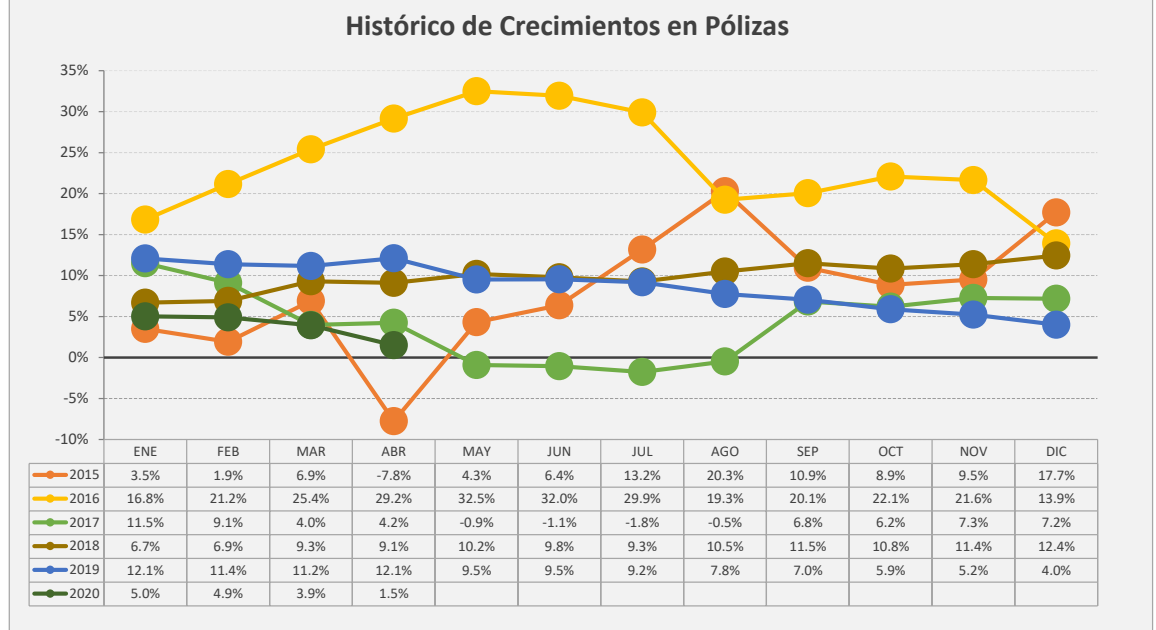
Superintendencia de Seguros y Reaseguros de Panamá

HISTORICOS DE CRECIMIENTO

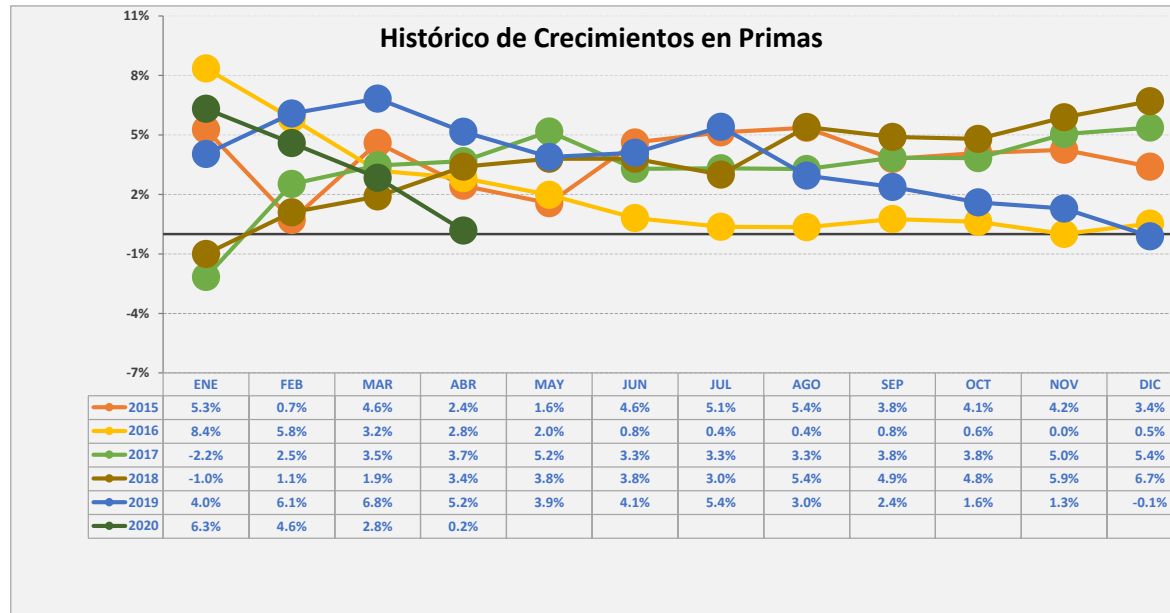
Crecimientos Acumulados 2020



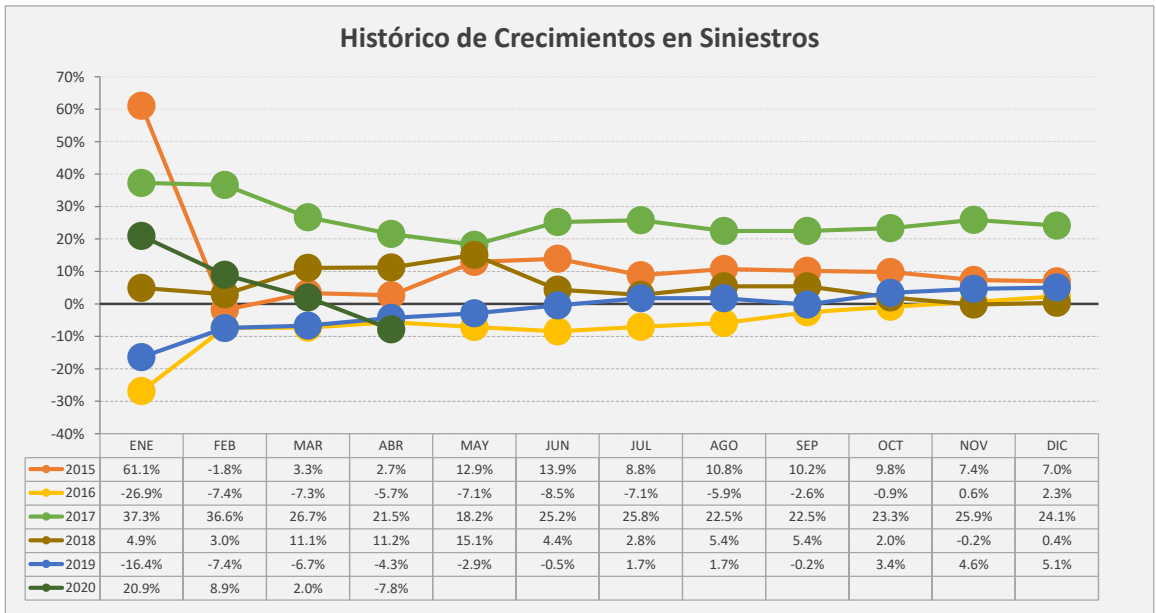
Histórico de Crecimientos en Pólizas



Histórico de Crecimientos en Primas



Histórico de Crecimientos en Siniestros





SUPERINTENDENCIA DE SEGUROS Y REASEGUROS DE PANAMÁ

ACUMULADO AL 30 DE ABRIL 2020

COMPARATIVO DE POBLACIÓN, PÓLIZAS, PRIMAS Y SINIESTROS DE SEGURO DIRECTO TOTALES (LOCAL Y EXTERIOR)

Ramos de Seguros TOTAL	UNIDADES ASEGURADAS				POLIZAS VIGENTES				PRIMAS SUSCRITAS				SINIESTROS PAGADOS			
	ABRIL		VARIACIÓN		ABRIL		VARIACIÓN		ACUMULADOS		VARIACIÓN		ACUMULADOS		VARIACIÓN	
	2020	2019	Absoluta	Porcentual	2020	2019	Absoluta	Porcentual	2020	2019	Absoluta	Porcentual	2020	2019	Absoluta	Porcentual
1 Vida Individual	263,997	269,013	(5,016)	-1.9%	254,432	253,702	730	0.3%	54,156,270.42	55,369,756.17	(1,213,485.75)	-2.2%	10,529,977.66	17,076,122.55	(6,546,144.89)	-38.3%
2 - Primer año	86,186	76,936	9,250	12.0%	82,419	74,617	7,802	10.5%	7,422,194.21	8,604,873.09	(1,182,678.88)	-13.7%	1,749,250.72	9,575,147.49	(7,825,896.77)	-81.7%
3 - Renovación	177,811	192,077	(14,266)	-7.4%	172,013	179,085	(7,072)	-3.9%	46,734,076.21	46,764,883.08	(30,806.87)	-0.1%	8,780,726.94	7,500,975.06	1,279,751.88	17.1%
4 Accidentes Personales	468,432	575,052	(106,620)	-18.5%	153,312	151,802	1,510	1.0%	8,532,493.20	11,620,318.83	(3,087,825.63)	-26.6%	1,678,498.22	1,718,431.68	(39,933.46)	-2.3%
5 - Individual	141,242	127,309	13,933	10.9%	121,687	106,956	14,731	13.8%	3,639,974.51	4,891,788.89	(1,251,814.38)	-25.6%	627,726.37	426,573.90	201,152.47	47.2%
6 - Grupo	327,190	447,743	(120,553)	-26.9%	31,625	44,846	(13,221)	-29.5%	4,892,518.69	6,728,529.94	(1,836,011.25)	-27.3%	1,050,771.85	1,291,857.78	(241,085.93)	-18.7%
7 - Invalidez	-	-	-	0.0%	-	-	-	0.0%	-	-	-	0.0%	-	-	-	0.0%
8 Salud	432,922	442,440	(9,518)	-2.2%	100,067	94,291	5,776	6.1%	113,669,107.15	107,605,270.72	6,063,836.43	5.6%	77,372,848.82	78,724,036.94	(1,351,188.12)	-1.7%
9 - Individual	113,046	106,050	6,996	6.6%	92,627	85,243	7,384	8.7%	55,227,431.17	50,849,892.62	4,377,538.55	8.6%	35,985,841.27	34,908,022.74	1,077,818.53	3.1%
10 - Grupo	319,876	336,390	(16,514)	-4.9%	7,440	9,048	(1,608)	-17.8%	58,441,675.98	56,755,378.10	1,686,297.88	3.0%	41,387,007.55	43,816,014.20	(2,429,006.65)	-5.5%
11 Colectivos de Vida	1,088,381	1,058,701	29,680	2.8%	73,122	59,385	13,737	23.1%	79,293,788.44	75,070,530.86	4,223,257.58	5.6%	17,690,752.40	19,914,797.73	(2,224,045.33)	-11.2%
12 Incendio y Líneas Aliadas (*)	418,131	417,839	292	0.1%	274,948	251,029	23,919	9.5%	53,397,283.57	49,285,109.03	4,112,174.54	8.3%	9,572,007.07	6,502,620.05	3,069,387.02	47.2%
13 - Residencial	327,437	314,698	12,739	4.0%	233,066	203,171	29,895	14.7%	19,409,684.82	20,446,858.92	(1,037,174.10)	-5.1%	4,568,309.73	3,706,835.09	861,474.64	23.2%
14 - Comercial	90,213	102,750	(12,537)	-12.2%	41,481	47,539	(6,058)	-12.7%	33,572,186.24	28,546,904.07	5,025,282.17	17.6%	4,974,182.75	2,768,962.18	2,205,220.57	79.6%
15 - Industrial	481	391	90	23.0%	401	319	82	25.7%	415,412.50	291,346.04	124,066.46	42.6%	29,514.59	26,822.78	2,691.81	10.0%
16 Vida Industrial	41	24	17	70.8%	41	24	17	70.8%	3,714.68	-	3,714.68	0.0%	-	-	-	0.0%
17 Anualidades	-	-	-	0.0%	-	-	-	0.0%	-	-	-	0.0%	-	-	-	0.0%
18 Rentas Vitalicias	-	-	-	0.0%	-	-	-	0.0%	-	-	-	0.0%	-	-	-	0.0%
19 Pérdida de Ingresos	-	-	-	0.0%	-	-	-	0.0%	-	-	-	0.0%	-	-	-	0.0%
20 Multiriesgo	28,100	26,935	1,165	4.3%	26,421	25,417	1,004	4.0%	1,995,678.64	2,512,761.44	(517,082.80)	-20.6%	740,676.40	731,968.22	8,708.18	1.2%
21 - Residencial	20,953	20,294	659	3.2%	20,328	19,706	622	3.2%	1,006,406.47	1,382,521.79	(376,115.32)	-27.2%	632,789.24	404,089.54	228,699.70	56.6%
22 - Comercial e Industrial	7,147	6,641	506	7.6%	6,093	5,711	382	6.7%	989,272.17	1,130,239.65	(140,967.48)	-12.5%	107,887.16	327,878.68	(219,991.52)	-67.1%
23 Transporte de Carga	37,307	36,979	328	0.9%	32,659	32,513	146	0.4%	8,228,703.77	8,042,635.94	186,067.83	2.3%	1,900,638.22	1,619,709.34	280,928.88	17.3%
24 - Terrestre	26,035	25,679	356	1.4%	25,294	25,105	189	0.8%	5,382,280.72	6,050,076.33	(667,795.61)	-11.0%	525,377.10	997,661.05	(472,283.95)	-47.3%
25 - Marítimo	11,193	11,236	(43)	-0.4%	7,286	7,344	(58)	-0.8%	2,797,427.16	1,942,342.99	855,084.17	44.0%	1,327,632.99	532,114.62	795,518.37	149.5%
26 - Aéreo	79	64	15	23.4%	79	64	15	23.4%	48,995.89	50,216.62	(1,220.73)	-2.4%	47,628.13	89,933.67	(42,305.54)	-47.0%
27 Casco	1,514	1,511	3	0.2%	1,023	1,014	9	0.9%	8,104,790.41	7,649,608.11	455,182.30	6.0%	2,137,179.63	1,816,293.89	320,885.74	17.7%
28 - Marítimo	1,172	1,160	12	1.0%	813	807	6	0.7%	3,984,741.70	2,776,587.32	1,208,154.38	43.5%	1,903,593.66	1,413,906.43	489,687.23	34.6%
29 - Aéreo	342	351	(9)	-2.6%	210	207	3	1.4%	4,120,048.71	4,873,020.79	(752,972.08)	-15.5%	233,585.97	402,387.46	(168,801.49)	-41.9%



SUPERINTENDENCIA DE SEGUROS Y REASEGUROS DE PANAMÁ

ACUMULADO AL 30 DE ABRIL 2020

COMPARATIVO DE POBLACIÓN, PÓLIZAS, PRIMAS Y SINIESTROS DE SEGURO DIRECTO TOTALES (LOCAL Y EXTERIOR)

Ramos de Seguros TOTAL	UNIDADES ASEGURADAS				POLIZAS VIGENTES				PRIMAS SUSCRITAS				SINIESTROS PAGADOS			
	ABRIL		VARIACIÓN		ABRIL		VARIACIÓN		ACUMULADOS		VARIACIÓN		ACUMULADOS		VARIACIÓN	
	2020	2019	Absoluta	Porcentual	2020	2019	Absoluta	Porcentual	2020	2019	Absoluta	Porcentual	2020	2019	Absoluta	Porcentual
30 Automóvil	907,171	924,913	(17,742)	-1.9%	801,357	824,040	(22,683)	-2.8%	83,024,862.73	104,515,133.12	(21,490,270.39)	-20.6%	53,026,170.17	65,464,007.66	(12,437,837.49)	-19.0%
31 Ramos Técnicos	14,304	13,657	647	4.7%	9,795	10,262	(467)	-4.6%	5,641,727.44	9,586,599.95	(3,944,872.51)	-41.1%	1,036,559.71	997,772.32	38,787.39	3.9%
32 - TRC - TRM	3,434	2,328	1,106	47.5%	2,288	2,080	208	10.0%	3,871,458.74	7,742,321.77	(3,870,863.03)	-50.0%	312,496.96	393,338.79	(80,841.83)	-20.6%
33 - Equipo Electrónico	4,545	4,856	(311)	-6.4%	3,381	3,656	(275)	-7.5%	698,976.10	551,038.49	147,937.61	26.8%	254,083.32	156,954.72	97,128.60	61.9%
34 - Caldera y Maquinaria	854	834	20	2.4%	829	830	(1)	-0.1%	10,235.22	206,884.08	(196,648.86)	-95.1%	-	2,903.52	(2,903.52)	-100.0%
35 - Rotura de Maquinaria	1,535	1,733	(198)	-11.4%	1,015	1,192	(177)	-14.8%	260,451.81	212,220.61	48,231.20	22.7%	39,534.55	112,452.96	(72,918.41)	-64.8%
36 - Equipo Pesado	3,931	3,896	35	0.9%	2,277	2,495	(218)	-8.7%	800,455.23	873,932.22	(73,476.99)	-8.4%	430,444.88	332,122.33	98,322.55	29.6%
37 - Vidrios	5	10	(5)	-50.0%	5	9	(4)	-44.4%	150.34	202.78	(52.44)	-25.9%	-	-	-	0.0%
38 Riesgos Diversos	103,681	94,575	9,106	9.6%	29,818	30,330	(512)	-1.7%	46,811,564.10	45,787,044.83	1,024,519.27	2.2%	9,877,271.63	8,633,653.55	1,243,618.08	14.4%
39 - Responsabilidad Civil	19,308	19,681	(373)	-1.9%	18,199	18,420	(221)	-1.2%	12,005,089.13	13,254,746.27	(1,249,657.14)	-9.4%	2,123,426.58	1,787,349.34	336,077.24	18.8%
40 - Robo	4,319	4,333	(14)	-0.3%	3,745	3,755	(10)	-0.3%	1,079,213.63	2,920,281.76	(1,841,068.13)	-63.0%	339,225.24	402,505.35	(63,280.11)	-15.7%
41 - Fidelidad y DDD	1,180	1,142	38	3.3%	1,168	1,130	38	3.4%	4,525,660.89	674,174.57	3,851,486.32	571.3%	859,388.72	1,054,478.29	(195,089.57)	-18.5%
42 - BBB	26	31	(5)	-16.1%	25	31	(6)	-19.4%	1,196,526.89	1,020,840.20	175,686.69	17.2%	441,126.18	2,932.74	438,193.44	14941.4%
43 - Otros	78,848	69,388	9,460	13.6%	6,681	6,994	(313)	-4.5%	28,005,073.56	27,917,002.03	88,071.53	0.3%	6,114,104.91	5,386,387.83	727,717.08	13.5%
44 Títulos de Propiedad	40	40	-	0.0%	40	40	-	0.0%	-	-	-	0.0%	-	-	-	0.0%
45 Fianzas	71,872	67,670	4,202	6.2%	70,332	66,418	3,914	5.9%	54,774,420.15	39,668,621.83	15,105,798.32	38.1%	23,639,757.63	23,783,341.96	(143,584.33)	-0.6%
46 - Oferta y Cumplimiento	32,608	27,191	5,417	19.9%	31,916	26,773	5,143	19.2%	24,956,342.19	24,372,246.06	584,096.13	2.4%	3,184,570.44	17,418,605.41	(14,234,034.97)	-81.7%
47 - Otras	39,264	40,479	(1,215)	-3.0%	38,416	39,645	(1,229)	-3.1%	29,818,077.96	15,296,375.77	14,521,702.19	94.9%	20,455,187.19	6,364,736.55	14,090,450.64	221.4%
48 TOTAL LOCAL Y EXTERIOR	3,835,893	3,929,349	(93,456)	-2.4%	1,827,367	1,800,267	27,100	1.5%	517,634,404.70	516,713,390.83	921,013.86	0.2%	209,202,337.56	226,982,755.89	(17,780,418.33)	-7.8%
Ramos de Personas	2,253,732	2,345,206	(91,474)	-3.9%	580,933	559,180	21,753	3.9%	255,651,659.21	249,665,876.58	5,985,782.63	2.4%	107,272,077.10	117,433,388.90	(10,161,311.80)	-8.7%
Ramos Generales	1,582,161	1,584,143	(1,982)	-0.1%	1,246,434	1,241,087	5,347	0.4%	261,982,745.49	267,047,514.25	(5,064,768.76)	-1.9%	101,930,260.46	109,549,366.99	(7,619,106.53)	-7.0%
Totales	3,835,893	3,929,349	(93,456)	-2.4%	1,827,367	1,800,267	27,100	1.5%	\$517,634,404.70	\$516,713,390.83	921,013.86	0.2%	\$209,202,337.56	\$226,982,755.89	(17,780,418.33)	-7.8%



SUPERINTENDENCIA DE SEGUROS Y REASEGUROS DE PANAMÁ

ABRIL 2020 (Cifras Fn Balboas)

COMPARATIVO DE POBLACIÓN, PÓLIZAS, PRIMAS Y SINIESTROS DE SEGURO DIRECTO TOTALES (LOCAL Y EXTERIOR)

Ramos de Seguros TOTAL	UNIDADES ASEGURADAS				PÓLIZAS VIGENTES				PRIMAS SUSCRITAS EN ABRIL				SINIESTROS PAGADOS EN ABRIL				
	ABRIL		VARIACIÓN		ABRIL		VARIACIÓN		ABRIL		VARIACIÓN		ABRIL		VARIACIÓN		
	2020	2019	Absoluta	Porcentual	2020	2019	Absoluta	Porcentual	2020	2019	Absoluta	Porcentual	2020	2019	Absoluta	Porcentual	
1	Vida Individual	263,997	269,013	(5,016)	-1.9%	254,432	253,702	730	0.3%	12,223,573.44	14,863,440.19	(2,639,866.75)	-17.8%	2,458,660.61	5,721,051.85	(3,262,391.24)	-57.0%
2	- Primer año	86,186	76,936	9,250	12.0%	82,419	74,617	7,802	10.5%	1,440,043.44	2,185,118.05	(745,074.61)	-34.1%	453,406.99	1,928,575.16	(1,475,168.17)	-76.5%
3	- Renovación	177,811	192,077	(14,266)	-7.4%	172,013	179,085	(7,072)	-3.9%	10,783,530.00	12,678,322.14	(1,894,792.14)	-14.9%	2,005,253.62	3,792,476.69	(1,787,223.07)	-47.1%
4	Accidentes Personales	468,432	575,052	(106,620)	-18.5%	153,312	151,802	1,510	1.0%	1,437,657.66	3,053,585.52	(1,615,927.86)	-52.9%	186,885.36	263,765.18	(76,879.82)	-29.1%
5	- Individual	141,242	127,309	13,933	10.9%	121,687	106,956	14,731	13.8%	710,710.41	1,518,217.83	(807,507.42)	-53.2%	67,632.73	69,794.77	(2,162.04)	-3.1%
6	- Grupo	327,190	447,743	(120,553)	-26.9%	31,625	44,846	(13,221)	-29.5%	726,947.25	1,535,367.69	(808,420.44)	-52.7%	119,252.63	193,970.41	(74,717.78)	-38.5%
7	- Invalidez	-	-	-	0.0%	-	-	-	0.0%	-	-	-	0.0%	-	-	-	0.0%
8	Salud	432,922	442,440	(9,518)	-2.2%	100,067	94,291	5,776	6.1%	28,789,265.08	25,788,991.31	3,000,273.77	11.6%	16,530,898.13	20,172,265.83	(3,641,367.70)	-18.1%
9	- Individual	113,046	106,050	6,996	6.6%	92,627	85,243	7,384	8.7%	13,962,821.47	13,155,453.63	807,367.84	6.1%	7,463,855.45	8,844,552.32	(1,380,696.87)	-15.6%
10	- Grupo	319,876	336,390	(16,514)	-4.9%	7,440	9,048	(1,608)	-17.8%	14,826,443.61	12,633,537.68	2,192,905.93	17.4%	9,067,042.68	11,327,713.51	(2,260,670.83)	-20.0%
11	Colectivos de Vida	1,088,381	1,058,701	29,680	2.8%	73,122	59,385	13,737	23.1%	19,651,594.60	19,576,270.00	75,324.60	0.4%	3,763,156.15	4,997,875.68	(1,234,719.53)	-24.7%
12	Incendio y Líneas Aliadas (*)	418,131	417,839	292	0.1%	274,948	251,029	23,919	9.5%	7,312,225.34	7,853,110.81	(540,885.47)	-6.9%	968,507.96	1,693,625.73	(725,117.77)	-42.8%
13	- Residencial	327,437	314,698	12,739	4.0%	233,066	203,171	29,895	14.7%	3,718,901.72	4,321,225.31	(602,323.59)	-13.9%	739,020.48	579,459.95	159,560.53	27.5%
14	- Comercial	90,213	102,750	(12,537)	-12.2%	41,481	47,539	(6,058)	-12.7%	3,504,637.45	3,460,475.21	44,162.24	1.3%	229,487.48	1,090,399.15	(860,911.67)	-79.0%
15	- Industrial	481	391	90	23.0%	401	319	82	25.7%	88,686.17	71,410.29	17,275.88	24.2%	-	23,766.63	(23,766.63)	-100.0%
16	Vida Industrial	41	24	17	70.8%	41	24	17	70.8%	797.78	-	797.78	0.0%	-	-	-	0.0%
17	Anualidades	-	-	-	0.0%	-	-	-	0.0%	-	-	-	0.0%	-	-	-	0.0%
18	Rentas Vitalicias	-	-	-	0.0%	-	-	-	0.0%	-	-	-	0.0%	-	-	-	0.0%
19	Pérdida de Ingresos	-	-	-	0.0%	-	-	-	0.0%	-	-	-	0.0%	-	-	-	0.0%
20	Multiriesgo	28,100	26,935	1,165	4.3%	26,421	25,417	1,004	4.0%	437,870.00	675,989.05	(238,119.05)	-35.2%	30,301.93	223,225.00	(192,923.07)	-86.4%
21	- Residencial	20,953	20,294	659	3.2%	20,328	19,706	622	3.2%	255,756.90	351,646.04	(95,889.14)	-27.3%	19,710.20	132,472.67	(112,762.47)	-85.1%
22	- Comercial e Industrial	7,147	6,641	506	7.6%	6,093	5,711	382	6.7%	182,113.10	324,343.01	(142,229.91)	-43.9%	10,591.73	90,752.33	(80,160.60)	-88.3%
23	Transporte de Carga	37,307	36,979	328	0.9%	32,659	32,513	146	0.4%	1,406,069.33	1,894,422.31	(488,352.98)	-25.8%	845,420.62	431,242.32	414,178.30	96.0%
24	- Terrestre	26,035	25,679	356	1.4%	25,294	25,105	189	0.8%	1,039,648.71	1,394,454.16	(354,805.45)	-25.4%	67,608.68	260,181.42	(192,572.74)	-74.0%
25	- Marítimo	11,193	11,236	(43)	-0.4%	7,286	7,344	(58)	-0.8%	363,208.69	498,611.95	(135,403.26)	-27.2%	744,616.74	171,060.90	573,555.84	335.3%
26	- Aéreo	79	64	15	23.4%	79	64	15	23.4%	3,211.93	1,356.20	1,855.73	136.8%	33,195.20	-	33,195.20	0.0%
27	Casco	1,514	1,511	3	0.2%	1,023	1,014	9	0.9%	1,361,534.00	950,721.34	410,812.66	43.2%	244,407.32	297,328.02	(52,920.70)	-17.8%
28	- Marítimo	1,172	1,160	12	1.0%	813	807	6	0.7%	1,062,688.26	514,324.85	548,363.41	106.6%	70,726.32	204,537.08	(133,810.76)	-65.4%
29	- Aéreo	342	351	(9)	-2.6%	210	207	3	1.4%	298,845.74	436,396.49	(137,550.75)	-31.5%	173,681.00	92,790.94	80,890.06	87.2%



SUPERINTENDENCIA DE SEGUROS Y REASEGUROS DE PANAMÁ

ABRIL 2020 (Cifras Fn Balboas)

COMPARATIVO DE POBLACIÓN, PÓLIZAS, PRIMAS Y SINIESTROS DE SEGURO DIRECTO TOTALES (LOCAL Y EXTERIOR)

Ramos de Seguros TOTAL	UNIDADES ASEGURADAS				PÓLIZAS VIGENTES				PRIMAS SUSCRITAS EN ABRIL				SINIESTROS PAGADOS EN ABRIL			
	ABRIL		VARIACIÓN		ABRIL		VARIACIÓN		ABRIL		VARIACIÓN		ABRIL		VARIACIÓN	
	2020	2019	Absoluta	Porcentual	2020	2019	Absoluta	Porcentual	2020	2019	Absoluta	Porcentual	2020	2019	Absoluta	Porcentual
30 Automóvil	907,171	924,913	(17,742)	-1.9%	801,357	824,040	(22,683)	-2.8%	14,535,908.66	26,174,430.86	(11,638,522.20)	-44.5%	5,693,828.76	17,155,040.39	(11,461,211.63)	-66.8%
31 Ramos Técnicos	14,304	13,657	647	4.7%	9,795	10,262	(467)	-4.6%	1,545,696.75	2,516,794.63	(971,097.88)	-38.6%	197,004.82	518,472.47	(321,467.65)	-62.0%
32 - TRC - TRM	3,434	2,328	1,106	47.5%	2,288	2,080	208	10.0%	1,218,350.28	2,110,057.27	(891,706.99)	-42.3%	32,702.80	323,121.88	(290,419.08)	-89.9%
33 - Equipo Electrónico	4,545	4,856	(311)	-6.4%	3,381	3,656	(275)	-7.5%	117,591.15	181,426.38	(63,835.23)	-35.2%	155,467.06	67,150.71	88,316.35	131.5%
34 - Caldera y Maquinaria	854	834	20	2.4%	829	830	(1)	-0.1%	10,235.22	-	10,235.22	0.0%	-	-	-	0.0%
35 - Rotura de Maquinaria	1,535	1,733	(198)	-11.4%	1,015	1,192	(177)	-14.8%	95,191.62	53,104.17	42,087.45	79.3%	8,332.33	(351.99)	8,684.32	0.0%
36 - Equipo Pesado	3,931	3,896	35	0.9%	2,277	2,495	(218)	-8.7%	104,328.64	172,224.31	(67,895.67)	-39.4%	502.63	128,551.87	(128,049.24)	-99.6%
37 - Vidrios	5	10	(5)	-50.0%	5	9	(4)	-44.4%	(0.16)	(17.50)	17.34	0.0%	-	-	-	0.0%
38 Riesgos Diversos	103,681	94,575	9,106	9.6%	29,818	30,330	(512)	-1.7%	19,141,618.62	11,410,830.26	7,730,788.36	67.7%	3,594,913.70	2,257,345.56	1,337,568.14	59.3%
39 - Responsabilidad Civil	19,308	19,681	(373)	-1.9%	18,199	18,420	(221)	-1.2%	2,904,317.05	3,694,473.67	(790,156.62)	-21.4%	604,576.44	406,414.91	198,161.53	48.8%
40 - Robo	4,319	4,333	(14)	-0.3%	3,745	3,755	(10)	-0.3%	143,379.13	170,109.09	(26,729.96)	-15.7%	14,293.34	71,971.67	(57,678.33)	-80.1%
41 - Fidelidad y DDD	1,180	1,142	38	3.3%	1,168	1,130	38	3.4%	1,098,577.27	135,818.15	962,759.12	708.9%	357,399.71	197,396.17	160,003.54	81.1%
42 - BBB	26	31	(5)	-16.1%	25	31	(6)	-19.4%	887,347.26	705,823.33	181,523.93	25.7%	345.08	-	345.08	0.0%
43 - Otros	78,848	69,388	9,460	13.6%	6,681	6,994	(313)	-4.5%	14,107,997.91	6,704,606.02	7,403,391.89	110.4%	2,618,299.13	1,581,562.81	1,036,736.32	65.6%
44 Títulos de Propiedad	40	40	-	0.0%	40	40	-	0.0%	-	-	-	0.0%	-	-	-	0.0%
45 Fianzas	71,872	67,670	4,202	6.2%	70,332	66,418	3,914	5.9%	6,049,789.72	9,375,446.77	(3,325,657.05)	-35.5%	2,643,162.22	4,528,915.05	(1,885,752.83)	-41.6%
46 - Oferta y Cumplimiento	32,608	27,191	5,417	19.9%	31,916	26,773	5,143	19.2%	1,482,251.12	4,371,049.12	(2,888,798.00)	-66.1%	290,014.86	1,857,446.35	(1,567,431.49)	-84.4%
47 - Otras	39,264	40,479	(1,215)	-3.0%	38,416	39,645	(1,229)	-3.1%	4,567,538.60	5,004,397.65	(436,859.05)	-8.7%	2,353,147.36	2,671,468.70	(318,321.34)	-11.9%
48 TOTAL TOTAL Y EXTERIOR	3,835,893	3,929,349	(93,456)	-2.4%	1,827,367	1,800,267	27,100	1.5%	113,893,600.98	124,134,033.05	(10,240,432.07)	-8.2%	37,157,147.58	58,260,153.08	(21,103,005.50)	-36.2%
0																
Ramos de Personas	2,253,732	2,345,206	(91,474)	-3.9%	580,933	559,180	21,753	3.9%	62,102,090.78	63,282,287.02	(1,180,196.24)	-1.9%	22,939,600.25	31,154,958.54	(8,215,358.29)	-26.4%
Ramos Generales	1,582,161	1,584,143	(1,982)	-0.1%	1,246,434	1,241,087	5,347	0.4%	51,791,510.20	60,851,746.03	(9,060,235.83)	-14.9%	14,217,547.33	27,105,194.54	(12,887,647.21)	-47.5%
Totales	3,835,893	3,929,349	(93,456)	-2.4%	1,827,367	1,800,267	27,100	1.5%	\$113,893,600.98	\$124,134,033.05	(10,240,432.07)	-8.2%	\$37,157,147.58	\$58,260,153.08	(21,103,005.50)	-36.2%



SUPERINTENDENCIA DE SEGUROS Y REASEGUROS DE PANAMÁ

MARZO 2020 (Cifras en Balboas)

COMPARATIVO DE POBLACIÓN, PÓLIZAS, PRIMAS Y SINIESTROS DE SEGURO DIRECTO TOTALES (LOCAL Y EXTERIOR)

Ramos de Seguros TOTAL	UNIDADES ASEGURADAS				POLIZAS VIGENTES				PRIMAS SUSCRITAS EN MARZO				SINIESTROS PAGADOS EN MARZO			
	MARZO		VARIACIÓN		MARZO		VARIACIÓN		MARZO		VARIACIÓN		MARZO		VARIACIÓN	
	2020	2019	Absoluta	Porcentual	2020	2019	Absoluta	Porcentual	2020	2019	Absoluta	Porcentual	2020	2019	Absoluta	Porcentual
1 Vida Individual	263,625	267,460	(3,835)	-1.4%	255,094	252,030	3,064	1.2%	13,954,319.28	12,937,108.02	1,017,211.26	7.9%	2,308,020.08	7,089,899.69	(4,781,879.61)	-67.4%
2 - Primer año	87,554	75,273	12,281	16.3%	83,777	72,310	11,467	15.9%	1,864,909.62	2,041,360.25	(176,450.63)	-8.6%	124,118.72	5,698,530.78	(5,574,412.06)	-97.8%
3 - Renovación	176,071	192,187	(16,116)	-8.4%	171,317	179,720	(8,403)	-4.7%	12,089,409.66	10,895,747.77	1,193,661.89	11.0%	2,183,901.36	1,391,368.91	792,532.45	57.0%
4 Accidentes Personales	483,376	519,904	(36,528)	-7.0%	156,250	148,103	8,147	5.5%	3,160,894.92	3,827,681.47	(666,786.55)	-17.4%	283,585.85	539,598.40	(256,012.55)	-47.4%
5 - Individual	142,942	124,675	18,267	14.7%	123,812	103,994	19,818	19.1%	1,247,083.66	1,383,589.79	(136,506.13)	-9.9%	80,277.31	93,993.85	(13,716.54)	-14.6%
6 - Grupo	340,434	395,229	(54,795)	-13.9%	32,438	44,109	(11,671)	-26.5%	1,913,811.26	2,444,091.68	(530,280.42)	-21.7%	203,308.54	445,604.55	(242,296.01)	-54.4%
7 - Invalidez	-	-	-	0.0%	-	-	-	0.0%	-	-	-	0.0%	-	-	-	0.0%
8 Salud	436,191	445,197	(9,006)	-2.0%	99,928	93,777	6,151	6.6%	25,876,732.27	25,282,685.97	594,046.30	2.3%	20,903,303.77	18,616,888.28	2,286,415.49	12.3%
9 - Individual	113,114	105,636	7,478	7.1%	92,486	84,900	7,586	8.9%	13,240,122.85	12,276,022.54	964,100.31	7.9%	9,404,980.40	8,402,632.24	1,002,348.16	11.9%
10 - Grupo	323,077	339,561	(16,484)	-4.9%	7,442	8,877	(1,435)	-16.2%	12,636,609.42	13,006,663.43	(370,054.01)	-2.8%	11,498,323.37	10,214,256.04	1,284,067.33	12.6%
11 Colectivos de Vida	1,089,618	1,016,930	72,688	7.1%	73,570	57,934	15,636	27.0%	19,420,035.69	18,480,440.25	939,595.44	5.1%	3,980,770.34	4,170,079.72	(189,309.38)	-4.5%
12 Incendio y Líneas Aliadas (*)	419,033	416,504	2,529	0.6%	275,662	256,986	18,676	7.3%	9,397,620.61	10,966,580.72	(1,568,960.11)	-14.3%	2,666,263.38	1,912,610.12	753,653.26	39.4%
13 - Residencial	327,863	313,172	14,691	4.7%	233,501	201,291	32,210	16.0%	5,540,235.54	6,112,272.36	(572,036.82)	-9.4%	628,736.92	1,339,964.64	(711,227.72)	-53.1%
14 - Comercial	90,671	102,942	(12,271)	-11.9%	41,756	55,379	(13,623)	-24.6%	3,728,018.53	4,775,790.97	(1,047,772.44)	-21.9%	2,008,370.32	571,584.08	1,436,786.24	251.4%
15 - Industrial	499	390	109	27.9%	405	316	89	28.2%	129,366.54	78,517.39	50,849.15	64.8%	29,156.14	1,061.40	28,094.74	2647.0%
16 Vida Industrial	26	25	1	4.0%	26	25	1	4.0%	2,916.90	-	2,916.90	0.0%	-	-	-	0.0%
17 Anualidades	-	-	-	0.0%	-	-	-	0.0%	-	-	-	0.0%	-	-	-	0.0%
18 Rentas Vitalicias	-	-	-	0.0%	-	-	-	0.0%	-	-	-	0.0%	-	-	-	0.0%
19 Pérdida de Ingresos	-	-	-	0.0%	-	-	-	0.0%	-	-	-	0.0%	-	-	-	0.0%
20 Multiriesgo	28,082	26,885	1,197	4.5%	26,405	25,365	1,040	4.1%	414,601.61	626,662.71	(212,061.10)	-33.8%	94,869.80	209,774.93	(114,905.13)	-54.8%
21 - Residencial	20,973	20,251	722	3.6%	20,347	19,660	687	3.5%	203,447.84	364,616.34	(161,168.50)	-44.2%	64,041.09	122,557.39	(58,516.30)	-47.7%
22 - Comercial e Industrial	7,109	6,634	475	7.2%	6,058	5,705	353	6.2%	211,153.77	262,046.37	(50,892.60)	-19.4%	30,828.71	87,217.54	(56,388.83)	-64.7%
23 Transporte de Carga	37,366	36,814	552	1.5%	32,720	32,314	406	1.3%	1,636,858.94	1,631,718.53	5,140.41	0.3%	178,463.91	357,048.86	(178,584.95)	-50.0%
24 - Terrestre	26,096	25,497	599	2.3%	25,353	24,896	457	1.8%	1,024,961.11	814,877.42	210,083.69	25.8%	114,883.22	142,109.36	(27,226.14)	-19.2%
25 - Marítimo	11,191	11,254	(63)	-0.6%	7,288	7,355	(67)	-0.9%	601,301.08	815,567.76	(214,266.68)	-26.3%	63,580.69	214,939.50	(151,358.81)	-70.4%
26 - Aéreo	79	63	16	25.4%	79	63	16	25.4%	10,596.75	1,273.35	9,323.40	732.2%	-	-	-	0.0%
27 Casco	1,545	1,524	21	1.4%	1,037	1,027	10	1.0%	3,891,254.24	2,921,048.72	970,205.52	33.2%	925,141.37	425,811.81	499,329.56	117.3%
28 - Marítimo	1,183	1,178	5	0.4%	825	822	3	0.4%	1,532,889.46	534,304.50	998,584.96	186.9%	897,802.06	116,215.29	781,586.77	672.5%
29 - Aéreo	362	346	16	4.6%	212	205	7	3.4%	2,358,364.78	2,386,744.22	(28,379.44)	-1.2%	27,339.31	309,596.52	(282,257.21)	-91.2%



SUPERINTENDENCIA DE SEGUROS Y REASEGUROS DE PANAMÁ

MARZO 2020 (Cifras en Balboas)

COMPARATIVO DE POBLACIÓN, PÓLIZAS, PRIMAS Y SINIESTROS DE SEGURO DIRECTO TOTALES (LOCAL Y EXTERIOR)

Ramos de Seguros TOTAL	UNIDADES ASEGURADAS				POLIZAS VIGENTES				PRIMAS SUSCRITAS EN MARZO				SINIESTROS PAGADOS EN MARZO			
	MARZO		VARIACIÓN		MARZO		VARIACIÓN		MARZO		VARIACIÓN		MARZO		VARIACIÓN	
	2020	2019	Absoluta	Porcentual	2020	2019	Absoluta	Porcentual	2020	2019	Absoluta	Porcentual	2020	2019	Absoluta	Porcentual
30 Automóvil	931,614	918,880	12,734	1.4%	827,581	816,145	11,436	1.4%	21,624,650.56	28,192,538.53	(6,567,887.97)	-23.3%	14,768,540.18	16,608,263.90	(1,839,723.72)	-11.1%
31 Ramos Técnicos	14,442	13,695	747	5.5%	9,932	10,275	(343)	-3.3%	1,363,432.28	3,362,137.06	(1,998,704.78)	-59.4%	358,828.46	110,583.33	248,245.13	224.5%
32 - TRC - TRM	3,520	2,278	1,242	54.5%	2,372	2,046	326	15.9%	884,249.98	2,879,562.44	(1,995,312.46)	-69.3%	4,687.94	1,034.38	3,653.56	353.2%
33 - Equipo Electrónico	4,559	4,890	(331)	-6.8%	3,395	3,699	(304)	-8.2%	170,317.28	147,305.64	23,011.64	15.6%	33,632.85	46,417.56	(12,784.71)	-27.5%
34 - Caldera y Maquinaria	852	834	18	2.2%	828	830	(2)	-0.2%	-	45,030.92	(45,030.92)	-100.0%	-	-	-	0.0%
35 - Rotura de Maquinaria	1,541	1,770	(229)	-12.9%	1,020	1,214	(194)	-16.0%	30,777.03	42,964.22	(12,187.19)	-28.4%	2,131.13	32,940.89	(30,809.76)	-93.5%
36 - Equipo Pesado	3,966	3,912	54	1.4%	2,313	2,476	(163)	-6.6%	277,929.99	247,267.68	30,662.31	12.4%	318,376.54	30,190.50	288,186.04	954.6%
37 - Vidrios	4	11	(7)	-63.6%	4	10	(6)	-60.0%	158.00	6.16	151.84	2464.9%	-	-	-	0.0%
38 Riesgos Diversos	103,136	94,372	8,764	9.3%	30,124	30,162	(38)	-0.1%	8,889,215.51	15,837,571.63	(6,948,356.12)	-43.9%	1,980,017.20	3,136,228.51	(1,156,211.31)	-36.9%
39 - Responsabilidad Civil	19,546	19,519	27	0.1%	18,452	18,260	192	1.1%	2,519,920.08	2,794,598.73	(274,678.65)	-9.8%	594,619.65	593,688.68	930.97	0.2%
40 - Robo	4,328	4,345	(17)	-0.4%	3,752	3,762	(10)	-0.3%	167,792.04	222,917.00	(55,124.96)	-24.7%	32,513.90	74,873.16	(42,359.26)	-56.6%
41 - Fidelidad y DDD	1,175	1,145	30	2.6%	1,162	1,130	32	2.8%	1,103,681.63	68,987.09	1,034,694.54	1499.8%	350,790.94	38,733.68	312,057.26	805.6%
42 - BBB	25	31	(6)	-19.4%	25	30	(5)	-16.7%	137,393.84	240,711.04	(103,317.20)	-42.9%	439,113.22	287.56	438,825.66	152603.2%
43 - Otros	78,062	69,332	8,730	12.6%	6,733	6,980	(247)	-3.5%	4,960,427.92	12,510,357.77	(7,549,929.85)	-60.3%	562,979.49	2,428,645.43	(1,865,665.94)	-76.8%
44 Titulos de Propiedad	40	40	-	0.0%	40	40	-	0.0%	-	-	-	0.0%	-	-	-	0.0%
45 Fianzas	73,097	66,700	6,397	9.6%	70,719	64,632	6,087	9.4%	24,194,204.68	10,454,752.44	13,739,452.24	131.4%	3,394,362.52	5,208,395.79	(1,814,033.27)	-34.8%
46 - Oferta y Cumplimiento	32,692	26,036	6,656	25.6%	31,957	25,498	6,459	25.3%	10,264,247.55	6,851,091.29	3,413,156.26	49.8%	483,478.17	2,975,473.87	(2,491,995.70)	-83.8%
47 - Otras	40,405	40,664	(259)	-0.6%	38,762	39,134	(372)	-1.0%	13,929,957.13	3,603,661.15	10,326,295.98	286.6%	2,910,884.35	2,232,921.92	677,962.43	30.4%
48 TOTAL TOTAL Y EXTERIOR	3,881,191	3,824,930	56,261	1.5%	1,859,088	1,788,815	70,273	3.9%	133,826,737.49	134,520,926.05	(694,188.56)	-0.5%	51,842,166.86	58,385,183.34	(6,543,016.48)	-11.2%
Ramos de Personas	2,272,810	2,249,491	23,319	1.0%	584,842	551,844	32,998	6.0%	62,411,982.16	60,527,915.71	1,884,066.45	3.1%	27,475,680.04	30,416,466.09	(2,940,786.05)	-9.7%
Ramos Generales	1,608,381	1,575,439	32,942	2.1%	1,274,246	1,236,971	37,275	3.0%	71,414,755.33	73,993,010.34	(2,578,255.01)	-3.5%	24,366,486.82	27,968,717.25	(3,602,230.43)	-12.9%
Totales	3,881,191	3,824,930	56,261	1.5%	1,859,088	1,788,815	70,273	3.9%	\$133,826,737.49	\$134,520,926.05	(694,188.56)	-0.5%	\$51,842,166.86	\$58,385,183.34	(6,543,016.48)	-11.2%



SUPERINTENDENCIA DE SEGUROS Y REASEGUROS DE PANAMÁ

FEBRERO 2020 (Cifras en Balboas)

COMPARATIVO DE POBLACIÓN, PÓLIZAS, PRIMAS Y SINIESTROS DE SEGURO DIRECTO TOTALES (LOCAL Y EXTERIOR)

Ramos de Seguros TOTAL	UNIDADES ASEGURADAS				POLIZAS VIGENTES				PRIMAS SUSCRITAS EN FEBRERO				SINIESTROS PAGADOS EN FEBRERO			
	FEBRERO		VARIACIÓN		FEBRERO		VARIACIÓN		FEBRERO		VARIACIÓN		FEBRERO		VARIACIÓN	
	2020	2019	Absoluta	Porcentual	2020	2019	Absoluta	Porcentual	2020	2019	Absoluta	Porcentual	2020	2019	Absoluta	Porcentual
1 Vida Individual	262,473	266,046	(3,573)	-1.3%	254,466	251,165	3,301	1.3%	13,707,195.76	13,667,103.45	40,092.31	0.3%	2,330,503.72	2,209,315.74	121,187.98	5.5%
2 - Primer año	87,314	73,518	13,796	18.8%	83,722	70,413	13,309	18.9%	1,860,829.98	2,037,477.42	(176,647.44)	-8.7%	613,154.90	843,749.58	(230,594.68)	-27.3%
3 - Renovación	175,159	192,528	(17,369)	-9.0%	170,744	180,752	(10,008)	-5.5%	11,846,365.78	11,629,626.03	216,739.75	1.9%	1,717,348.82	1,365,566.16	351,782.66	25.8%
4 Accidentes Personales	417,292	404,314	12,978	3.2%	155,840	145,925	9,915	6.8%	2,207,200.45	2,648,452.59	(441,252.14)	-16.7%	413,379.29	438,803.06	(25,423.77)	-5.8%
5 - Individual	142,030	122,748	19,282	15.7%	122,836	101,659	21,177	20.8%	1,058,201.64	942,651.43	115,550.21	12.3%	132,739.55	139,727.59	(6,988.04)	-5.0%
6 - Grupo	275,262	281,566	(6,304)	-2.2%	33,004	44,266	(11,262)	-25.4%	1,148,998.81	1,705,801.16	(556,802.35)	-32.6%	280,639.74	299,075.47	(18,435.73)	-6.2%
7 - Invalidez	-	-	-	0.0%	-	-	-	0.0%	-	-	-	0.0%	-	-	-	0.0%
8 Salud	435,254	446,239	(10,985)	-2.5%	99,578	93,657	5,921	6.3%	28,914,775.97	28,501,376.57	413,399.40	1.5%	18,117,524.42	19,971,115.56	(1,853,591.14)	-9.3%
9 - Individual	112,908	105,610	7,298	6.9%	92,279	84,887	7,392	8.7%	13,901,178.16	12,689,512.87	1,211,665.29	9.5%	8,820,166.88	9,056,066.01	(235,899.13)	-2.6%
10 - Grupo	322,346	340,629	(18,283)	-5.4%	7,299	8,770	(1,471)	-16.8%	15,013,597.81	15,811,863.70	(798,265.89)	-5.0%	9,297,357.54	10,915,049.55	(1,617,692.01)	-14.8%
11 Colectivos de Vida	1,078,106	997,544	80,562	8.1%	72,593	56,721	15,872	28.0%	20,600,887.54	19,273,483.98	1,327,403.56	6.9%	4,392,093.16	5,790,594.95	(1,398,501.79)	-24.2%
12 Incendio y Líneas Aliadas (*)	417,612	429,695	(12,083)	-2.8%	274,461	256,326	18,135	7.1%	9,510,658.41	10,144,018.77	(633,360.36)	-6.2%	1,265,509.54	1,261,537.71	3,971.83	0.3%
13 - Residencial	326,677	308,846	17,831	5.8%	232,350	199,663	32,687	16.4%	4,628,652.69	4,382,869.88	245,782.81	5.6%	893,614.21	416,476.74	477,137.47	114.6%
14 - Comercial	90,430	120,460	(30,030)	-24.9%	41,700	56,350	(14,650)	-26.0%	4,829,213.64	5,717,380.54	(888,166.90)	-15.5%	371,536.88	844,825.22	(473,288.34)	-56.0%
15 - Industrial	505	389	116	29.8%	411	313	98	31.3%	52,792.08	43,768.35	9,023.73	20.6%	358.45	235.75	122.70	52.0%
16 Vida Industrial	11	25	(14)	-56.0%	11	25	(14)	-56.0%	-	-	-	0.0%	-	-	-	0.0%
17 Anualidades	-	-	-	0.0%	-	-	-	0.0%	-	-	-	0.0%	-	-	-	0.0%
18 Rentas Vitalicias	-	-	-	0.0%	-	-	-	0.0%	-	-	-	0.0%	-	-	-	0.0%
19 Pérdida de Ingresos	-	-	-	0.0%	-	-	-	0.0%	-	-	-	0.0%	-	-	-	0.0%
20 Multiriesgo	27,963	26,824	1,139	4.2%	26,271	25,308	963	3.8%	525,257.92	671,662.56	(146,404.64)	-21.8%	524,584.75	186,679.45	337,905.30	181.0%
21 - Residencial	20,930	20,197	733	3.6%	20,306	19,605	701	3.6%	232,296.66	302,505.77	(70,209.11)	-23.2%	487,649.61	82,915.54	404,734.07	488.1%
22 - Comercial e Industrial	7,033	6,627	406	6.1%	5,965	5,703	262	4.6%	292,961.26	369,156.79	(76,195.53)	-20.6%	36,935.14	103,763.91	(66,828.77)	-64.4%
23 Transporte de Carga	37,318	36,740	578	1.6%	32,648	32,226	422	1.3%	2,024,347.64	1,659,857.19	364,490.45	22.0%	300,016.99	383,291.72	(83,274.73)	-21.7%
24 - Terrestre	26,044	25,409	635	2.5%	25,277	24,795	482	1.9%	1,035,189.15	1,436,052.86	(400,863.71)	-27.9%	66,622.16	338,601.68	(271,979.52)	-80.3%
25 - Marítimo	11,196	11,266	(70)	-0.6%	7,293	7,366	(73)	-1.0%	983,528.71	204,066.64	779,462.07	382.0%	232,385.72	44,962.89	187,422.83	416.8%
26 - Aéreo	78	65	13	20.0%	78	65	13	20.0%	5,629.78	19,737.69	(14,107.91)	-71.5%	1,009.11	(272.85)	1,281.96	0.0%
27 Casco	1,552	1,557	(5)	-0.3%	1,042	1,048	(6)	-0.6%	1,090,233.91	1,488,083.75	(397,849.84)	-26.7%	525,585.75	783,731.80	(258,146.05)	-32.9%
28 - Marítimo	1,183	1,208	(25)	-2.1%	824	846	(22)	-2.6%	733,716.67	1,174,266.41	(440,549.74)	-37.5%	530,585.75	783,731.80	(253,146.05)	-32.3%
29 - Aéreo	369	349	20	5.7%	218	202	16	7.9%	356,517.24	313,817.34	42,699.90	13.6%	(5,000.00)	-	(5,000.00)	0.0%



SUPERINTENDENCIA DE SEGUROS Y REASEGUROS DE PANAMÁ

FEBRERO 2020 (Cifras en Balboas)

COMPARATIVO DE POBLACIÓN, PÓLIZAS, PRIMAS Y SINIESTROS DE SEGURO DIRECTO TOTALES (LOCAL Y EXTERIOR)

Ramos de Seguros TOTAL	UNIDADES ASEGURADAS				POLIZAS VIGENTES				PRIMAS SUSCRITAS EN FEBRERO				SINIESTROS PAGADOS EN FEBRERO			
	FEBRERO		VARIACIÓN		FEBRERO		VARIACIÓN		FEBRERO		VARIACIÓN		FEBRERO		VARIACIÓN	
	2020	2019	Absoluta	Porcentual	2020	2019	Absoluta	Porcentual	2020	2019	Absoluta	Porcentual	2020	2019	Absoluta	Porcentual
30 Automóvil	941,486	913,279	28,207	3.1%	837,376	809,913	27,463	3.4%	21,366,869.98	23,209,071.90	(1,842,201.92)	-7.9%	15,373,968.11	16,723,688.08	(1,349,719.97)	-8.1%
31 Ramos Técnicos	14,516	13,655	861	6.3%	9,908	10,331	(423)	-4.1%	1,147,132.94	1,667,169.56	(520,036.62)	-31.2%	328,116.38	214,746.11	113,370.27	52.8%
32 - TRC - TRM	3,459	2,175	1,284	59.0%	2,325	2,041	284	13.9%	668,120.96	1,240,663.06	(572,542.10)	-46.1%	261,237.68	44,790.16	216,447.52	483.2%
33 - Equipo Eléctrico	4,555	4,932	(377)	-7.6%	3,392	3,751	(359)	-9.6%	245,756.32	97,918.77	147,837.55	151.0%	12,088.73	30,488.02	(18,399.29)	-60.3%
34 - Caldera y Maquinaria	852	834	18	2.2%	828	830	(2)	-0.2%	-	70,155.43	(70,155.43)	-100.0%	-	2,903.52	(2,903.52)	-100.0%
35 - Rotura de Maquinaria	1,590	1,790	(200)	-11.2%	1,041	1,226	(185)	-15.1%	72,470.91	35,387.49	37,083.42	104.8%	-	19,579.92	(19,579.92)	-100.0%
36 - Equipo Pesado	4,056	3,913	143	3.7%	2,318	2,473	(155)	-6.3%	160,784.75	222,888.71	(62,103.96)	-27.9%	54,789.97	116,984.49	(62,194.52)	-53.2%
37 - Vidrios	4	11	(7)	-63.6%	4	10	(6)	-60.0%	-	156.10	(156.10)	-100.0%	-	-	-	0.0%
38 Riesgos Diversos	101,444	92,703	8,741	9.4%	30,042	30,157	(115)	-0.4%	8,122,794.09	7,352,036.12	770,757.97	10.5%	2,323,417.33	1,828,216.29	495,201.04	27.1%
39 - Responsabilidad Civil	19,464	19,431	33	0.2%	18,363	18,187	176	1.0%	2,635,221.03	2,869,777.26	(234,556.23)	-8.2%	621,401.17	393,440.40	227,960.77	57.9%
40 - Robo	4,333	4,353	(20)	-0.5%	3,756	3,765	(9)	-0.2%	200,409.81	1,043,721.91	(843,312.10)	-80.8%	52,683.92	214,761.79	(162,077.87)	-75.5%
41 - Fidelidad y DDD	1,173	1,152	21	1.8%	1,163	1,134	29	2.6%	1,032,263.23	133,375.21	898,888.02	674.0%	104,400.15	361,818.97	(257,418.82)	-71.1%
42 - BBB	30	31	(1)	-3.2%	29	29	-	0.0%	(4,620.85)	37,909.32	(42,530.17)	-112.2%	345.08	1,600.59	(1,255.51)	-78.4%
43 - Otros	76,444	67,736	8,708	12.9%	6,731	7,042	(311)	-4.4%	4,259,520.87	3,267,252.42	992,268.45	30.4%	1,544,587.01	856,594.54	687,992.47	80.3%
44 Títulos de Propiedad	40	40	-	0.0%	40	40	-	0.0%	-	-	-	0.0%	-	-	-	0.0%
45 Fianzas	72,282	66,332	5,950	9.0%	69,981	64,245	5,736	8.9%	17,721,538.12	13,296,679.22	4,424,858.90	33.3%	12,826,249.65	9,710,762.62	3,115,487.03	32.1%
46 - Oferta y Cumplimiento	32,103	25,668	6,435	25.1%	31,420	25,118	6,302	25.1%	11,215,732.58	9,876,164.96	1,339,567.62	13.6%	1,477,195.39	9,347,952.64	(7,870,757.25)	-84.2%
47 - Otras	40,179	40,664	(485)	-1.2%	38,561	39,127	(566)	-1.4%	6,505,805.54	3,420,514.26	3,085,291.28	90.2%	11,349,054.26	362,809.98	10,986,244.28	3028.1%
48 TOTAL TOTAL Y EXTERIOR	3,807,349	3,694,993	112,356	3.0%	1,864,257	1,777,087	87,170	4.9%	126,938,892.73	123,578,995.66	3,359,897.07	2.7%	58,720,949.09	59,502,483.09	(781,534.00)	-1.3%
Ramos de Personas	2,193,125	2,114,143	78,982	3.7%	582,477	547,468	35,009	6.4%	65,430,059.72	64,090,416.59	1,339,643.13	2.1%	25,253,500.59	28,409,829.31	(3,156,328.72)	-11.1%
Ramos Generales	1,614,224	1,580,850	33,374	2.1%	1,281,780	1,229,619	52,161	4.2%	61,508,833.01	59,488,579.07	2,020,253.94	3.4%	33,467,448.50	31,092,653.78	2,374,794.72	7.6%
Totales	3,807,349	3,694,993	112,356	3.0%	1,864,257	1,777,087	87,170	4.9%	\$126,938,892.73	\$123,578,995.66	3,359,897.07	2.7%	\$58,720,949.09	\$59,502,483.09	(781,534.00)	-1.3%



SUPERINTENDENCIA DE SEGUROS Y REASEGUROS DE PANAMÁ

ABRIL 2020 (Cifras en Balboas)

COMPARATIVO DE POBLACIÓN, PÓLIZAS, PRIMAS Y SINIESTROS DE SEGURO DIRECTO TOTALES (LOCAL Y EXTERIOR)

Ramos de Seguros TOTAL	UNIDADES ASEGURADAS				POLIZAS VIGENTES				PRIMAS SUSCRITAS EN ABRIL				SINIESTROS PAGADOS EN ABRIL			
	ABRIL		VARIACIÓN		ABRIL		VARIACIÓN		ABRIL		VARIACIÓN		ABRIL		VARIACIÓN	
	2020	2019	Absoluta	Porcentual	2020	2019	Absoluta	Porcentual	2020	2019	Absoluta	Porcentual	2020	2019	Absoluta	Porcentual
1 Vida Individual	263,562	258,866	4,696	1.8%	253,823	249,714	4,109	1.6%	14,271,181.94	13,902,104.51	369,077.43	2.7%	3,432,793.25	2,055,855.27	1,376,937.98	67.0%
2 - Primer año	87,102	70,526	16,576	23.5%	83,482	67,887	15,595	23.0%	2,256,411.17	2,340,917.37	(84,506.20)	-3.6%	558,570.11	1,104,291.97	(545,721.86)	-49.4%
3 - Renovación	176,460	188,340	(11,880)	-6.3%	170,341	181,827	(11,486)	-6.3%	12,014,770.77	11,561,187.14	453,583.63	3.9%	2,874,223.14	951,563.30	1,922,659.84	202.1%
4 Accidentes Personales	417,874	409,870	8,004	2.0%	154,140	143,809	10,331	7.2%	1,726,740.17	2,090,599.25	(363,859.08)	-17.4%	794,647.72	476,265.04	318,382.68	66.8%
5 - Individual	140,051	120,740	19,311	16.0%	120,692	98,976	21,716	21.9%	623,978.80	1,047,329.84	(423,351.04)	-40.4%	347,076.78	123,057.69	224,019.09	182.0%
6 - Grupo	277,823	289,130	(11,307)	-3.9%	33,448	44,833	(11,385)	-25.4%	1,102,761.37	1,043,269.41	59,491.96	5.7%	447,570.94	353,207.35	94,363.59	26.7%
7 - Invalidez	-	-	-	0.0%	-	-	-	0.0%	-	-	-	0.0%	-	-	-	0.0%
8 Salud	434,533	444,794	(10,261)	-2.3%	98,795	92,917	5,878	6.3%	30,088,333.83	28,032,216.87	2,056,116.96	7.3%	21,821,122.50	19,963,767.27	1,857,355.23	9.3%
9 - Individual	112,328	105,009	7,319	7.0%	91,502	84,394	7,108	8.4%	14,123,308.69	12,728,903.58	1,394,405.11	11.0%	10,296,838.54	8,604,772.17	1,692,066.37	19.7%
10 - Grupo	322,205	339,785	(17,580)	-5.2%	7,293	8,523	(1,230)	-14.4%	15,965,025.14	15,303,313.29	661,711.85	4.3%	11,524,283.96	11,358,995.10	165,288.86	1.5%
11 Colectivos de Vida	1,081,686	1,002,237	79,449	7.9%	71,280	55,465	15,815	28.5%	19,621,270.61	17,740,336.63	1,880,933.98	10.6%	5,554,732.75	4,956,247.38	598,485.37	12.1%
12 Incendio y Líneas Aliadas (*)	417,205	429,820	(12,615)	-2.9%	272,143	256,009	16,134	6.3%	27,176,779.21	20,321,398.73	6,855,380.48	33.7%	4,671,726.19	1,634,846.49	3,036,879.70	185.8%
13 - Residencial	324,772	307,631	17,141	5.6%	230,477	198,382	32,095	16.2%	5,521,894.87	5,630,491.37	(108,596.50)	-1.9%	2,306,938.12	1,370,933.76	936,004.36	68.3%
14 - Comercial	91,933	121,803	(29,870)	-24.5%	41,260	57,317	(16,057)	-28.0%	21,510,316.62	14,593,257.35	6,917,059.27	47.4%	2,364,788.07	262,153.73	2,102,634.34	802.1%
15 - Industrial	500	386	114	29.5%	406	310	96	31.0%	144,567.72	97,650.01	46,917.71	48.0%	-	1,759.00	(1,759.00)	-100.0%
16 Vida Industrial	11	25	(14)	-56.0%	11	25	(14)	-56.0%	-	-	-	0.0%	-	-	-	0.0%
17 Anualidades	-	-	-	0.0%	-	-	-	0.0%	-	-	-	0.0%	-	-	-	0.0%
18 Rentas Vitalicias	-	-	-	0.0%	-	-	-	0.0%	-	-	-	0.0%	-	-	-	0.0%
19 Pérdida de Ingresos	-	-	-	0.0%	-	-	-	0.0%	-	-	-	0.0%	-	-	-	0.0%
20 Multiriesgo	27,706	26,771	935	3.5%	26,104	25,265	839	3.3%	617,949.11	538,447.12	79,501.99	14.8%	90,919.92	112,288.84	(21,368.92)	-19.0%
21 - Residencial	20,816	20,188	628	3.1%	20,248	19,574	674	3.4%	314,905.07	363,753.64	(48,848.57)	-13.4%	61,388.34	66,143.94	(4,755.60)	-7.2%
22 - Comercial e Industrial	6,890	6,583	307	4.7%	5,856	5,691	165	2.9%	303,044.04	174,693.48	128,350.56	73.5%	29,531.58	46,144.90	(16,613.32)	-36.0%
23 Transporte de Carga	37,200	36,630	570	1.6%	32,521	32,169	352	1.1%	3,161,427.86	2,856,637.91	304,789.95	10.7%	576,736.70	448,126.44	128,610.26	28.7%
24 - Terrestre	25,939	25,301	638	2.5%	25,167	24,740	427	1.7%	2,282,481.75	2,404,691.89	(122,210.14)	-5.1%	276,263.04	256,768.59	19,494.45	7.6%
25 - Marítimo	11,194	11,267	(73)	-0.6%	7,287	7,367	(80)	-1.1%	849,388.68	424,096.64	425,292.04	100.3%	287,049.84	101,151.33	185,898.51	183.8%
26 - Aéreo	67	62	5	8.1%	67	62	5	8.1%	29,557.43	27,849.38	1,708.05	6.1%	13,423.82	90,206.52	(76,782.70)	-85.1%
27 Casco	1,538	1,571	(33)	-2.1%	1,026	1,067	(41)	-3.8%	1,761,768.26	2,289,754.30	(527,986.04)	-23.1%	442,045.19	309,422.26	132,622.93	42.9%
28 - Marítimo	1,172	1,227	(55)	-4.5%	813	870	(57)	-6.6%	655,447.31	553,691.56	101,755.75	18.4%	404,479.53	309,422.26	95,057.27	30.7%
29 - Aéreo	366	344	22	6.4%	213	197	16	8.1%	1,106,320.95	1,736,062.74	(629,741.79)	-36.3%	37,565.66	-	37,565.66	0.0%



SUPERINTENDENCIA DE SEGUROS Y REASEGUROS DE PANAMÁ

ABRIL 2020 (Cifras en Balboas)

COMPARATIVO DE POBLACIÓN, PÓLIZAS, PRIMAS Y SINIESTROS DE SEGURO DIRECTO TOTALES (LOCAL Y EXTERIOR)

Ramos de Seguros TOTAL	UNIDADES ASEGURADAS				POLIZAS VIGENTES				PRIMAS SUSCRITAS EN ABRIL				SINIESTROS PAGADOS EN ABRIL			
	ABRIL		VARIACIÓN		ABRIL		VARIACIÓN		ABRIL		VARIACIÓN		ABRIL		VARIACIÓN	
	2020	2019	Absoluta	Porcentual	2020	2019	Absoluta	Porcentual	2020	2019	Absoluta	Porcentual	2020	2019	Absoluta	Porcentual
30 Automóvil	939,870	903,959	35,911	4.0%	834,139	803,138	31,001	3.9%	25,497,433.53	26,939,091.83	(1,441,658.30)	-5.4%	17,189,833.12	14,977,015.29	2,212,817.83	14.8%
31 Ramos Técnicos	14,338	13,971	367	2.6%	9,823	10,347	(524)	-5.1%	1,585,465.47	2,040,498.70	(455,033.23)	-22.3%	152,610.05	153,970.41	(1,360.36)	-0.9%
32 - TRC - TRM	3,418	2,229	1,189	53.3%	2,262	1,989	273	13.7%	1,100,737.52	1,512,039.00	(411,301.48)	-27.2%	13,868.54	24,392.37	(10,523.83)	-43.1%
33 - Equipo Electrónico	4,568	4,957	(389)	-7.8%	3,382	3,786	(404)	-10.7%	165,311.35	124,387.70	40,923.65	32.9%	52,894.68	12,898.43	39,996.25	310.1%
34 - Caldera y Maquinaria	852	830	22	2.7%	828	827	1	0.1%	-	91,697.73	(91,697.73)	-100.0%	-	-	-	0.0%
35 - Rotura de Maquinaria	1,582	2,049	(467)	-22.8%	1,035	1,252	(217)	-17.3%	62,012.25	80,764.73	(18,752.48)	-23.2%	29,071.09	60,284.14	(31,213.05)	-51.8%
36 - Equipo Pesado	3,911	3,896	15	0.4%	2,309	2,484	(175)	-7.0%	257,411.85	231,551.52	25,860.33	11.2%	56,775.74	56,395.47	380.27	0.7%
37 - Vidrios	7	10	(3)	-30.0%	7	9	(2)	-22.2%	(7.50)	58.02	(65.52)	-112.9%	-	-	-	0.0%
38 Riesgos Diversos	100,549	91,973	8,576	9.3%	29,471	29,951	(480)	-1.6%	10,657,935.88	11,186,606.82	(528,670.94)	-4.7%	1,978,923.40	1,411,863.19	567,060.21	40.2%
39 - Responsabilidad Civil	19,310	19,247	63	0.3%	18,140	18,033	107	0.6%	3,945,630.97	3,895,896.61	49,734.36	1.3%	302,829.32	393,805.35	(90,976.03)	-23.1%
40 - Robo	4,276	4,345	(69)	-1.6%	3,689	3,761	(72)	-1.9%	567,632.65	1,483,533.76	(915,901.11)	-61.7%	239,734.08	40,898.73	198,835.35	486.2%
41 - Fidelidad y DDD	1,125	1,131	(6)	-0.5%	1,112	1,115	(3)	-0.3%	1,291,138.76	335,994.12	955,144.64	284.3%	46,797.92	456,529.47	(409,731.55)	-89.7%
42 - BBB	29	31	(2)	-6.5%	28	30	(2)	-6.7%	176,406.64	36,396.51	140,010.13	384.7%	1,322.80	1,044.59	278.21	26.6%
43 - Otros	75,809	67,219	8,590	12.8%	6,502	7,012	(510)	-7.3%	4,677,126.86	5,434,785.82	(757,658.96)	-13.9%	1,388,239.28	519,585.05	868,654.23	167.2%
44 Títulos de Propiedad	40	92	(52)	-56.5%	40	92	(52)	-56.5%	-	-	-	0.0%	-	-	-	0.0%
45 Fianzas	71,755	66,147	5,608	8.5%	69,428	64,028	5,400	8.4%	6,808,887.63	6,541,743.40	267,144.23	4.1%	4,775,983.24	4,335,268.50	440,714.74	10.2%
46 - Oferta y Cumplimiento	31,464	25,423	6,041	23.8%	30,812	24,833	5,979	24.1%	1,994,110.94	3,273,940.69	(1,279,829.75)	-39.1%	933,882.02	3,237,732.55	(2,303,850.53)	-71.2%
47 - Otras	40,291	40,724	(433)	-1.1%	38,616	39,195	(579)	-1.5%	4,814,776.69	3,267,802.71	1,546,973.98	47.3%	3,842,101.22	1,097,535.95	2,744,565.27	250.1%
48 TOTAL TOTAL Y EXTERIOR	3,807,867	3,686,726	121,141	3.3%	1,852,744	1,763,996	88,748	5.0%	142,975,173.50	134,479,436.07	8,495,737.43	6.317%	61,482,074.03	50,834,936.38	10,647,137.65	20.9%
Ramos de Personas	2,197,655	2,115,767	81,888	3.9%	578,038	541,905	36,133	6.7%	65,707,526.55	61,765,257.26	3,942,269.29	6.4%	31,603,296.22	27,452,134.96	4,151,161.26	15.1%
Ramos Generales	1,610,212	1,570,959	39,253	2.5%	1,274,706	1,222,091	52,615	4.3%	77,267,646.95	72,714,178.81	4,553,468.14	6.3%	29,878,777.81	23,382,801.42	6,495,976.39	27.8%
Totales	3,807,867	3,686,726	121,141	3.3%	1,852,744	1,763,996	88,748	5.0%	\$142,975,173.50	\$134,479,436.07	8,495,737.43	6.3%	\$61,482,074.03	\$50,834,936.38	10,647,137.65	20.9%